



# PARK AND RECREATION MASTER PLAN 2024 - 2028

CITY OF HASTINGS  
201 E STATE STREET  
HASTINGS, MI 49058  
(269) 945-2468



COVER PHOTO IS FROM HASTINGS RIVERWALK

---

## CONTENTS

INTRODUCTION .....	5
Plan Purpose .....	5
Plan Scope.....	5
COMMUNITY DESCRIPTION .....	7
Plan Jurisdiction .....	7
Regional Setting.....	7
Physical Characteristics .....	9
Water Resources.....	9
Demographics and Population Characteristics.....	10
Land Use .....	12
ADMINISTRATIVE STRUCTURE.....	13
Hastings City Council.....	13
Hastings City Manager .....	14
Hastings Park and Recreation Committee .....	14
Departmental Organizational Structure.....	14
Parks and Recreation Department.....	15
Goals and Objectives of the Parks and Recreation Department.....	15
Annual and Projected Budget .....	16
Current Funding Sources .....	18
Role of Volunteers and Organizations.....	18
Relationships with Schools and Other Public Agencies.....	18
RECREATION INVENTORY.....	19
Park Classifications .....	19
Barrier Free Accessibility .....	20
City of Hastings Facilities .....	21
Vacant Land.....	21
Status of Grant Assisted Facilities .....	21
Inventory of Existing Parks and Recreational Facilities.....	23
Bliss Riverfront Park.....	24
Description.....	24
Accessibility Assessment .....	24
Needs and Opportunities.....	25

---

Maps .....	25
Bob King Park.....	26
Description.....	26
Accessibility Assessment .....	26
Needs and Opportunities.....	27
Maps .....	27
Hastings Dog Park.....	28
Description.....	28
Accessibility Assessment .....	28
Needs and Opportunities.....	28
Maps .....	29
First Ward Park .....	30
Description.....	30
Accessibility Assessment .....	30
Needs and Opportunities.....	31
Maps .....	31
Fish Hatchery Park .....	32
Description.....	32
Accessibility Assessment .....	32
Needs and Opportunities.....	33
Maps .....	33
Hammond Hills Park.....	34
Description.....	34
Needs and Opportunities.....	35
Maps .....	35
Hastings Riverwalk & Pocket Park.....	36
Description.....	36
Needs and Opportunities.....	36
Maps .....	37
Second Ward Park.....	38
Description.....	38
Accessibility Assessment .....	38
Needs and Opportunities.....	38



---

Maps .....	39
Spray Plaza .....	40
Description.....	40
Accessibility Assessment .....	40
Needs and Opportunities.....	40
Maps .....	41
Sweezy’s Nature Area .....	42
Description.....	42
Accessibility Assessment .....	42
Needs and Opportunities.....	42
Maps .....	43
Thornapple Plaza .....	44
Description.....	44
Accessibility Assessment .....	44
Needs and Opportunities.....	44
Maps .....	45
Tyden Nature Area .....	46
Description.....	46
Accessibility Assessment .....	46
Needs and Opportunities.....	46
Maps .....	47
Tyden Park.....	48
Description.....	48
Accessibility Assessment .....	48
Needs and Opportunities.....	49
Maps .....	49
School Facilities.....	50
Cemeteries.....	50
Semi-Public Recreational Facilities in the City .....	50
Private Recreational Facilities in the City of Hastings.....	51
Regional Recreational Facilities.....	51
Semi-Public Recreational Facilities Outside the City Limits.....	52
Private Recreational Facilities Outside the City Limits .....	53



---

THE PLANNING & PUBLIC INPUT PROCESS..... 54

Planning Methods ..... 54

Public Input ..... 55

GOALS AND OBJECTIVES..... 56

ACTION PLAN..... 59

Future Park Development ..... 59

Potential Funding Sources/Partners ..... 61

APPENDIX A. POST COMPLETION SELF-CERTIFICATION REPORTS ..... 62

APPENDIX B. COMMUNITY SURVEY RESULTS ..... 80

APPENDIX C. NOTICE OF DRAFT PLAN FOR 30 DAYS OF PUBLIC COMMENT ..... 87

APPENDIX D. PUBLIC HEARING NOTICE ..... 88

APPENDIX E. MINUTES FROM PUBLIC HEARING ..... 89

APPENDIX F. MEETING MINUTES TO PASS RESOLUTION OF ADOPTION ..... 94

APPENDIX G. TRANSMITTAL LETTERS..... 100

---

## INTRODUCTION

Parks, Recreation, and Open Space are important elements of all communities and provide many recreational, social, and environmental benefits that contribute to a high quality of life. The City of Hastings has recognized the importance of proper recreation planning and has chosen to take an active role in the delivery of recreational opportunities by updating the Parks and Recreation Plan. Recreation planning is an exercise engaged by local governments to anticipate change, and to promote the development and expansion of recreational facilities and services for the benefit of its community.

Parks and recreation facilities provide many benefits to the community and the natural environment. Parks provide people with a place to gather, be active, socialize, and connect with the environment and community. Green infrastructure also enhances the livability of a community by increasing property values and connecting the community. Having the ability to recreate has also been shown to improve the quality of life by contributing to overall mental and physical health and reducing obesity brought on by inactivity. As the community continues to grow and change over time, the City continues to dedicate themselves to improving recreational offerings for its citizens. This plan represents the culmination of the planning efforts of the community and local officials; and respects the City's desire to blend the available recreational resources and activities with the environmental and cultural elements of the community.

### Plan Purpose

The 2024 - 2028 Park and Recreation Master Plan is a guide for the future development of recreation facilities in the city. It provides short and midrange recommendations for park facilities, programs, and services; maintenance operations; administration and management; and capital improvements. The City recognizes the significant role that recreation plays in providing a high quality of life and improved physical health of its citizens. This appreciation has been manifested in this report to update the Parks and Recreation Master Plan with the hopes of improving local park systems and public trails, promoting the preservation of natural areas, and establishing a strong commitment to strengthening a sense of community. This plan provides the data and direction to ensure that parks and recreation offerings are aligned with the community needs and values. The plan addresses current recreation issues and identifies and prioritizes future needs of the community and the means for meeting those needs over the upcoming five-year period.

The scope of the planning effort is limited to the city boundaries. However, consideration is also made of regional facilities that influence use patterns. The use of City facilities by residents living in the surrounding communities, which may have limited recreation facilities of their own, is also a consideration of the planning process. In terms of an implementation timeline, the Action Program section of this document covers development over the next five years.

### Plan Scope

The scope of this plan includes suggestions for the management, improvement, and expansion of the recreation system within the City of Hastings. The plan also considers recreational facilities within the county, neighboring townships, and school district that are available to citizens of the Hastings community. Key planning issues are identified, a clear set of goals and objectives are outlined, and specific implementation strategies are delineated. The scope will include all of the City's recreation facilities, undeveloped open space, trail systems, and recreational programming.

---

The City's recreation plan is updated every five years. The previous plans documented conditions and trends at the time and contained many ideas for improvements; some of which have been realized. This updated plan builds on the recommendations of the previous plans and has been developed to reflect the changing needs and goals of the Hastings Community. This plan also meets the Michigan Department of Natural Resources requirements for qualifying for Federal and State funding assistance. These funds are available for land acquisition, facility development and improvements to new and existing park lands.



---

# COMMUNITY DESCRIPTION

## Plan Jurisdiction

This section is intended to describe the jurisdiction and focus of the plan, provide a brief overview of the community, and identify important community-based factors that should be considered in parks and recreational planning. This Recreation Master Plan has been prepared to serve the City of Hastings and is planned to focus on all aspects of the City's parks and recreation facilities and programs. Recreational facilities and programs that serve adjacent communities have also been considered and incorporated into this planning document. The plan is intended to contribute to the quality of life for the residents and visitors of the Hastings community, but also provide recreational experiences to the residents in adjacent communities within the county.

## Regional Setting

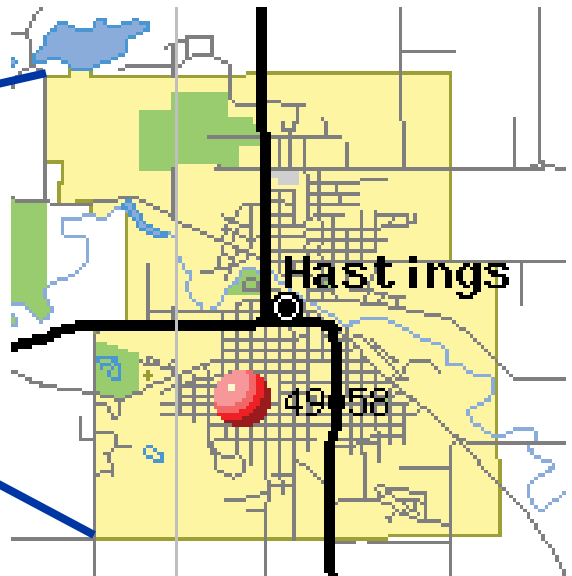
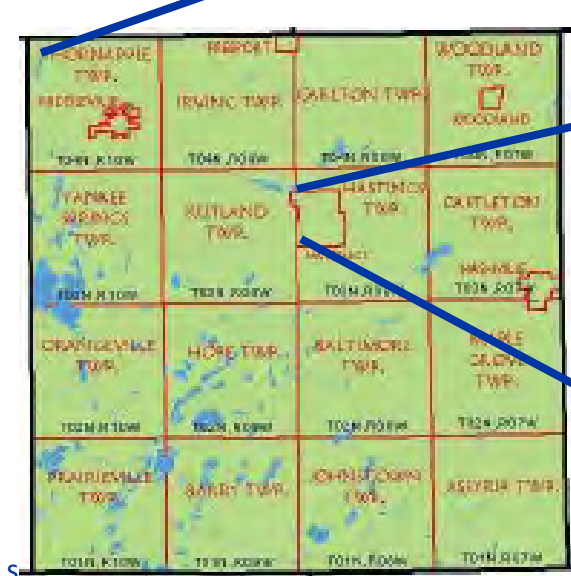
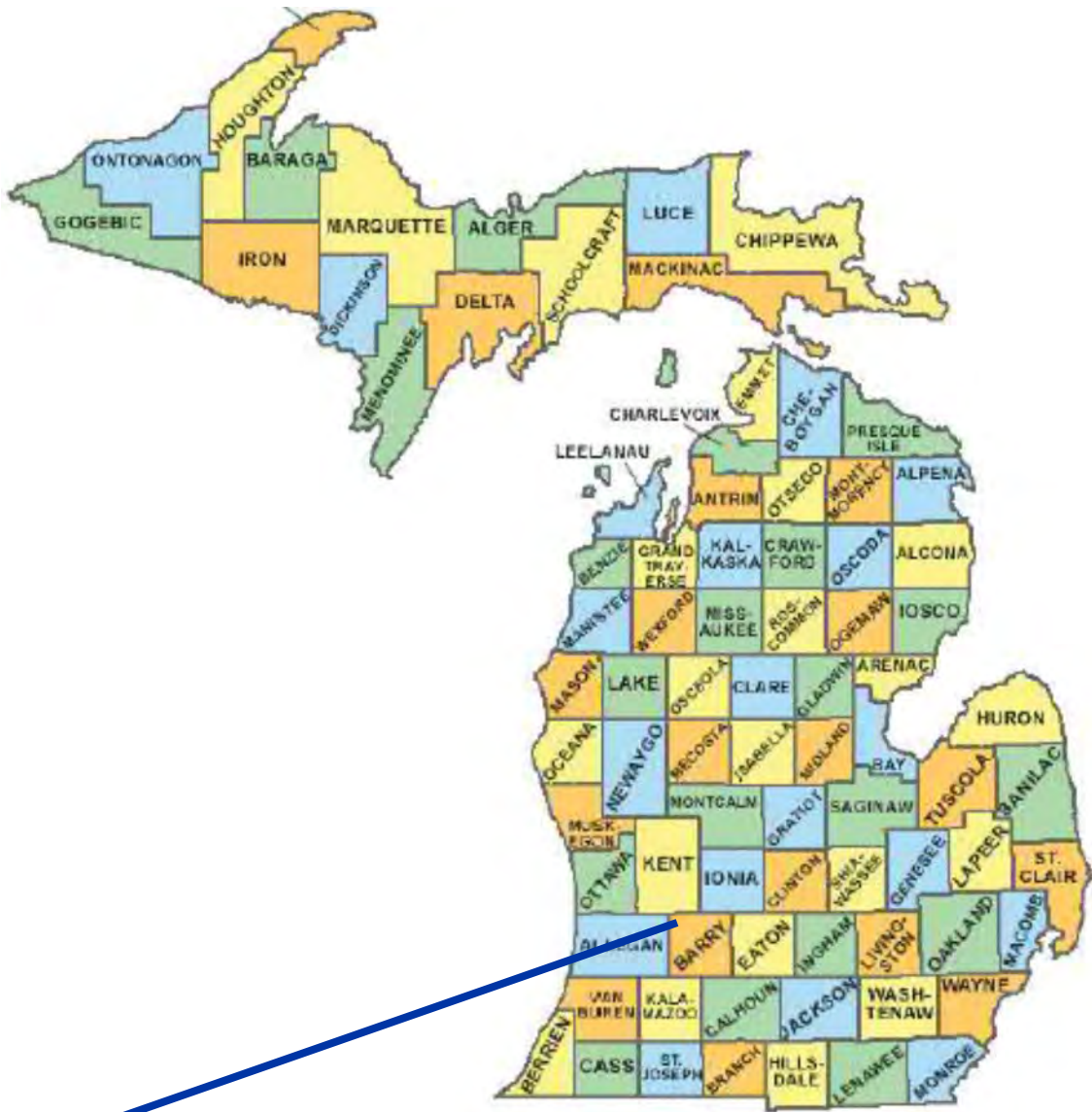
The City of Hastings is located in the center north of Barry County in the southwestern lower peninsula of Michigan, centrally positioned between the metropolitan areas of Kalamazoo/Battle Creek, Grand Rapids and Lansing. The City of Hastings is the only City and the most urbanized area of Barry County and serves as the County Seat. The city is bordered by Hastings Township to the north, east and south, and by Rutland Charter Township to the west. Figure 1 - Location Map shows the relationship of the City of Hastings to neighboring communities.

The City of Hastings includes a hilly, wooded countryside dotted with spring-fed lakes and covers approximately 5.28 square miles in area. The City of Hastings is served by two major highways, M-43 running from Lansing (northeast) to Kalamazoo (southwest) and M-37 running from Grand Rapids (northwest) to Battle Creek (southeast). M-79 runs due east from the city, linking to M-66 and I-69 and M-179 links to US 131 to the west. The distance from major highways has helped the City maintain its rural small-town identity, but transportation links are sufficient to encourage continuing commercial and residential development.

The history of Hastings dates back to 1836 when three entrepreneurs purchased the 480 acres along the Thornapple River from Eurotas P. Hastings. They platted the land into lots and streets and soon a small community arose. In 1843, the State legislature designated Hastings as the County Seat of Barry County, ensuring the City's future importance. The historic Barry County Courthouse, which dominates the downtown, was built in 1893.

The city grew through the 1800s with a wooden schoolhouse built in 1841, a stagecoach service linking the City to Grand Rapids and Battle Creek in 1848 and the first railroad service in 1861. Hastings was incorporated as a village in 1855 and officially became a City in 1871. The City's downtown area exhibits many 19th Century buildings, while more modern commercial development continues along West State Street, extending into the neighboring Rutland Charter Township.

Figure 1: Location Map: Hastings, MI 49058



---

## Physical Characteristics

**Topography.** The topography of the city ranges from undulating in the northwest and southwest to relatively flat in the central area, ranging between 750-800 feet above sea level. The surrounding land is characterized by rolling topography with numerous lakes, streams, wooded areas, and wetlands.

**Climatology.** Lake Michigan, which is about 110 miles west of Hastings, has a significant influence on the climate of the study area. The lake temperature, together with the prevailing westerly winds, moderates seasonal temperature extremes. Hastings gets some kind of precipitation, on average, 79 days per year and gets 37 inches of rain, on average, per year. Hastings is considered to have a warm summer continental climate based on its seasonal precipitation and temperature patterns.

**Soils.** The characteristics of the majority of soils within Hastings impose minor constraints on development. In general, loam, sandy loam, and loamy sand soils are most common. Loamy soils are found primarily in the southern half of the city, sandy loam in the northwest and west quadrant, and loamy sand soils in the northeast areas of the city. These soils are well drained for the most part. Physical limitations to their development, when they do occur, exist because of excessive slopes. Organic soils offer the greatest physical constraint to development with the City of Hastings. These soils are generally poor drained, occurring in depression areas. Most often these soils coincide with the wetland and floodplain areas of the city. Limitations are attached to development on organic soils due to problems with drainage, frost action, and low bearing capacity.

## Water Resources

Although there are no significant lakes located within the City limits, there are a number of lakes in the surrounding Townships that are considered valuable resources in the area. These include Algonquin, Carter, Lily, Leach, Laubaugh, Middle, Lower, Bear Hole, and Thornapple Lakes. Hastings is also characterized by the Thornapple River which meanders through the City and provides a valuable resource to the community. Many wetland and flood prone areas exist adjacent to the river. Wetlands are a critical natural feature that help collect and store precipitation and run-off regulate the movement of water within watersheds and serve as filters for sediments and organic matter. Lakes, rivers, and wetlands have proven to be valuable resources for the community, and it is essential to protect these natural resources.

**Thornapple River.** The Thornapple River is a dominant waterway that cuts through the north part of the City and meanders from the east to the west and north. It is a tributary of the Grand River and its watershed covers approximately 857 square miles covering portions of Barry, Eaton, Ionia, and Kent Counties. The Thornapple River also includes approximately 324 miles of streams and rivers that flow into it. The river is a prized natural feature in the community and a major source of recreation that sees significant use for rafting, kayaking, tubing, canoeing, and fishing. The river includes many points of access including canoe liveries, overlook decks, and fishing areas. The river is also home to a large variety of wildlife including many species of birds and fish including duck, heron, osprey, eagle, bluegill, northern pike, trout, bass, and perch.

**Sweezy's Pond.** The pond, originally known as Bates' Pond, was once dammed, and served as a feeder for the former fish hatchery at the corner of Green Street and Cook Road (that later became Fish Hatchery Park). After the dam was damaged in 2014, the pond was allowed to return to its natural state. Currently the pond is surrounded by woodland and wetland areas, and provides home to many species of wildlife.

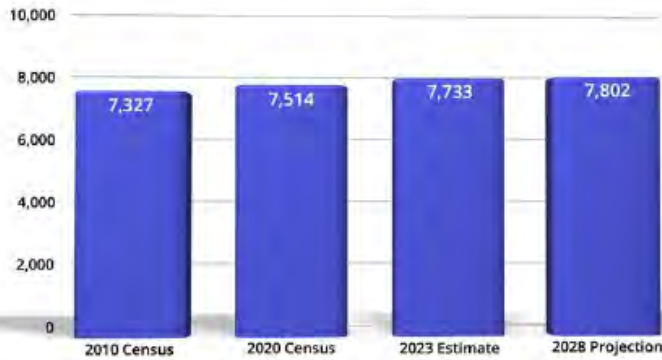


## Demographics and Population Characteristics

The review of trends in population growth is helpful in developing an understanding of the city’s recreational needs. Also reviewing other demographic indicators such as age and income can assist in determining the type of recreational facilities that may be needed or desired and will allow facilities and programs to keep pace with demand.

*Figure 2: Population and Household Trends with 2028 Projection*

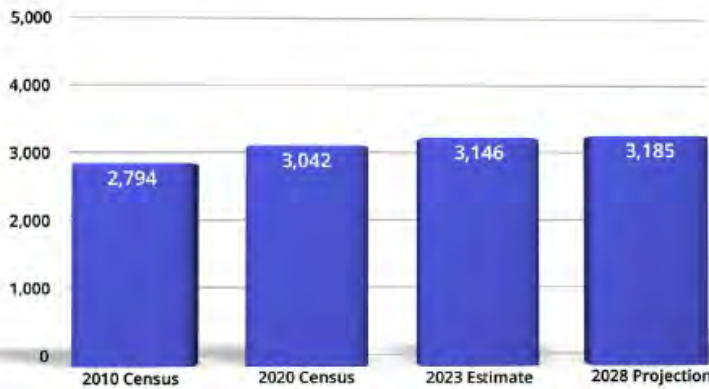
### Population Trend 2010 Census - 2028 Projection



Years	Percent Change
2010 to 2020	+2.55
2020 to 2023	+2.92
2023 to 2028	+0.89

Source: Claritas 2023

### Household Trend 2010 Census - 2028 Projection



Years	Percent Change
2010 to 2020	+8.88
2020 to 2023	+3.42
2023 to 2028	+1.24

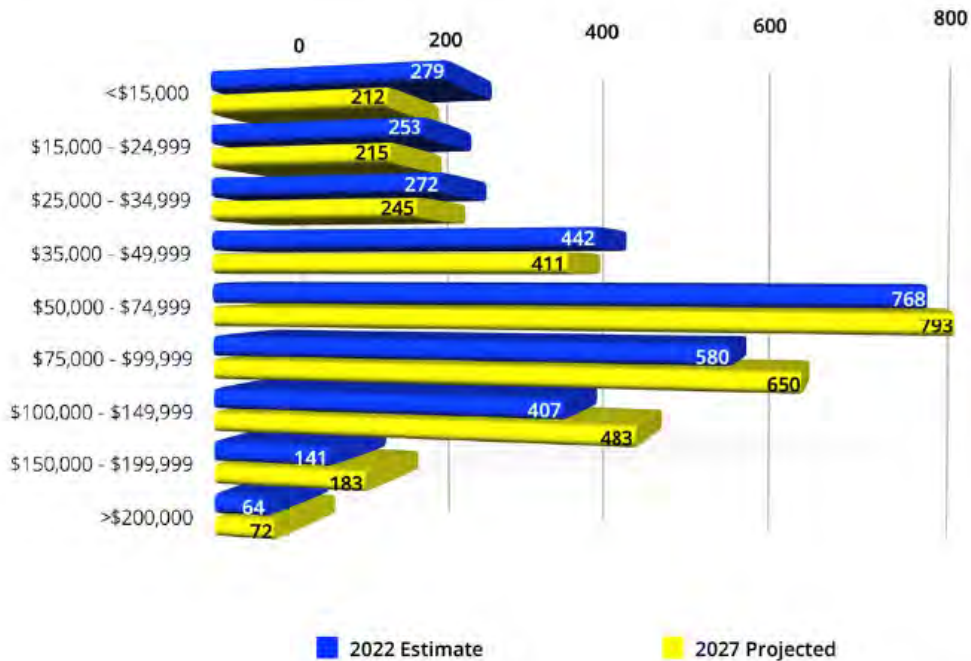
Source: Claritas 2023

A successful parks and recreation system includes providing affordable recreational opportunities to the community. It is important to understand the availability of disposable income for recreation within the community as household incomes vary within the region. Please see “Key Data Points – Household Income” on the next page.

*Figure 3: Population and Household Trends with 2028 Projection*

**Key Data Points- Household Income**

Site	2022 Median Household Income	2022 Average Household Income
Hastings, MI	\$58,874	\$73,897
Barry County, MI	\$67,170	\$86,600
Michigan	\$63,818	\$91,758

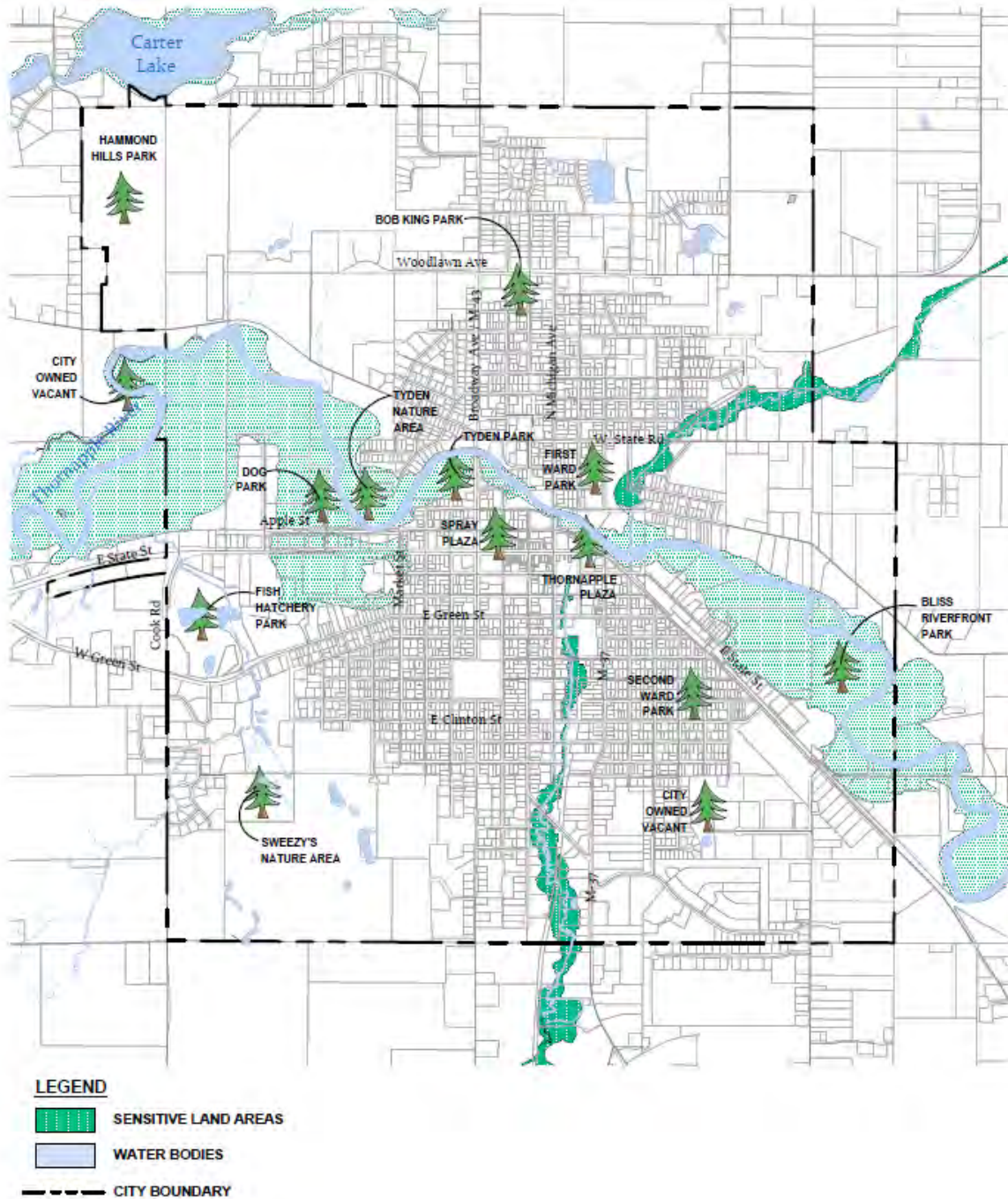


Source: Claritas 2023

## Land Use

The land use distribution and development pattern of a community is important when considering the geographic distribution of parks and recreational facilities because they should be placed where there are concentrations of residents and the related places of public gathering. The City recently updated its Master Future Land Use Plan that serves as a guide for future growth and development and allow the City to prepare for the future needs of the community.

*Figure 4: City of Hastings Sensitive Land Areas*

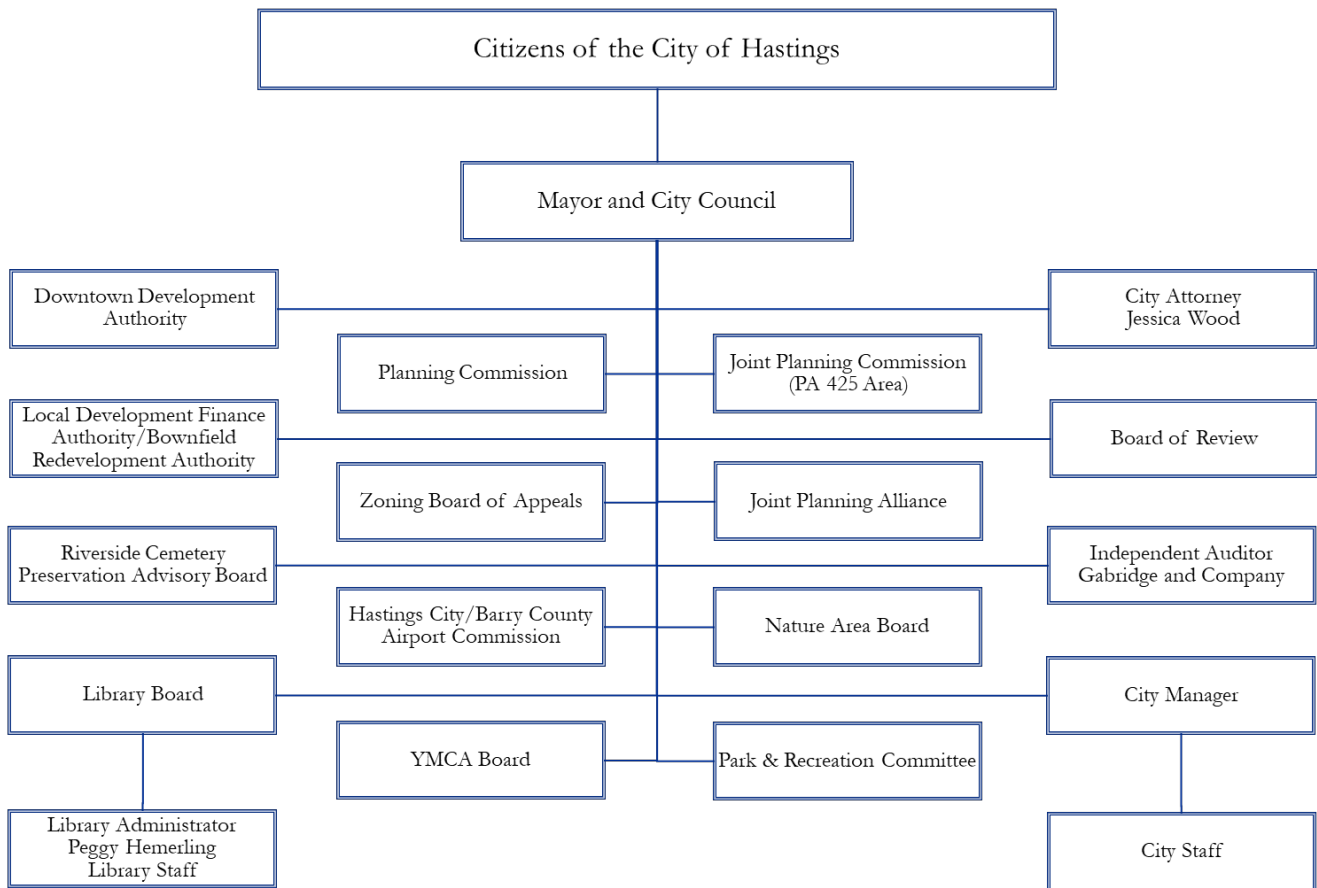




# ADMINISTRATIVE STRUCTURE

The City of Hastings operates under the Council/Manager form of government. The Council/Manager Plan is a system of local government that combines the political leadership of an elected City Council with the professional managerial experience of a City Manager. In order to understand how park and recreation functions are administered in the City, we must look at the administrative structure of the City. Refer to Figure 5 for the City Organization Chart.

*Figure 5: City Organization Chart*



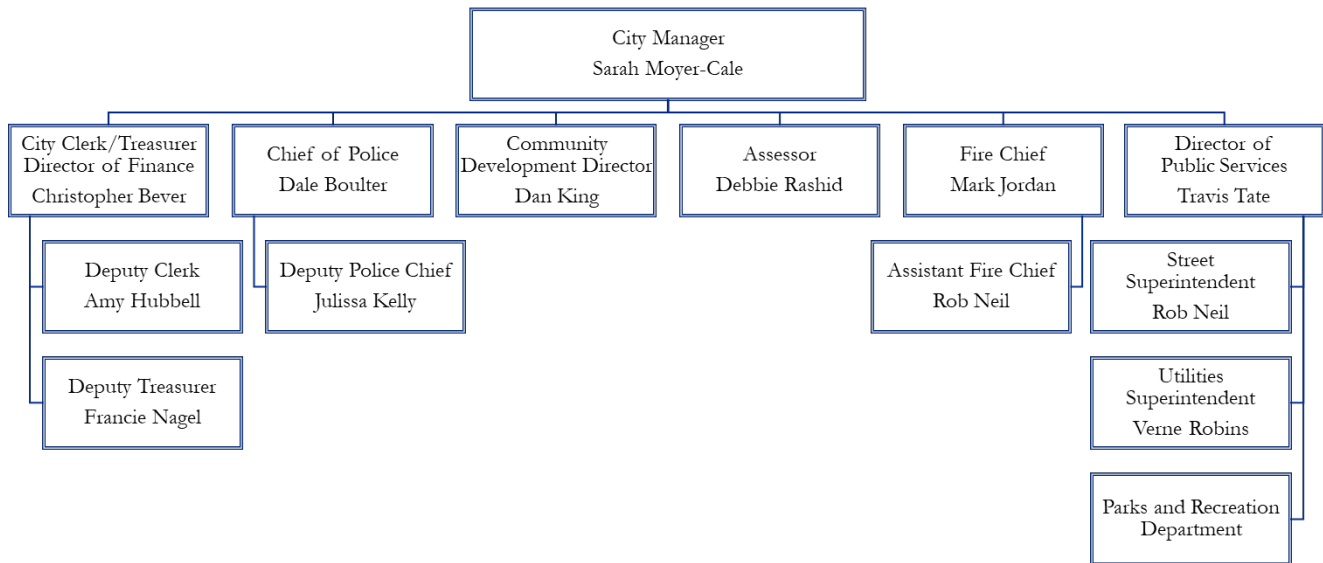
## Hastings City Council

The Hastings City Council consists of a Mayor and two elected officials from each of the City’s four wards, one of which serves as Mayor Pro-Tem. The Mayor serves a term of four years, while members of the Council also serve four-year terms that are staggered. The Council is the legislative and policy making body of the City and is responsible for the performance of all obligations and duties imposed on the City by the State of Michigan in accordance with the City Charter. The City Council approves the annual budget and any necessary budget amendments for the Park Department.

## Hastings City Manager

The City Manager serves as the chief administrative officer and is responsible to the City Council for all administrative functions and business of the City. City employees are hired and discharged by the City Manager and are responsible to the City Manager in all aspects of job performance. The City Manager prepares and submits the annual budget proposal of the City. The City Manager acts as the chief purchasing agent of the City, seeks federal funds and represents the City in all contract and labor negotiations. The City Council appoints the City Manager who is responsible for advising the Council on various matters facing the City and implementing the policies of the Council. The City Manager is responsible for the day-to-day operation of all City services and programs.

*Figure 6: City Administrative Staff Organization Chart*



## Hastings Park and Recreation Committee

The Mayor has appointed five community members and employees to serve on the City’s Park and Recreation Committee. Formed in 2022, the committee exists to explore options for park maintenance and improvements and to make funding recommendations to the City Council. Only the City Council has the authority to commit funding for parks. This committee meets monthly on the third Wednesday of each month.

## Departmental Organizational Structure

Under the direction of the City Manager, three (3) municipal departments are actively involved in the administration, planning, and maintenance of the City’s parks, recreation, programs, and services.

- Department of Parks and Recreation
- Department of Public Services
- Department of Community Development

---

## Parks and Recreation Department

The Parks and Recreation Department is responsible for all matters relating to the construction, management, maintenance, and operation of the physical properties and services of the parks and recreation facilities owned, leased, or operated by the City of Hastings. The Parks Department is administered by the Director of Public Services. The Department is responsible for general operational oversight of the parks and related facilities, including administration of the ordinances related to park operation. The Department works with the Michigan Department of Natural Resources and other State and Federal agencies to obtain funding for improvements to the parks and recreation system.

The Department works with and provides funds for the Barry County YMCA to provide recreation services for local residents. Recreation facilities within the parks are utilized by numerous public and private groups. The Parks and Recreation Department is administered by the Department of Public Services. The Director of Public Services is charged with direct oversight of the Department. In turn, the Director of Public Services is accountable to the City Manager who is ultimately accountable to the City Council. Personnel and equipment from the Department of Public Services are utilized for maintenance and other operations within the park facilities.

## Goals and Objectives of the Parks and Recreation Department

**Goal 1:** Maintain the Parks and Recreation Facilities of the City of Hastings in the best possible condition.

Objectives:

- To monitor and maintain the park grounds and facilities as required.
- To repair or replace damaged park equipment.
- To strive to improve the quality of park and recreation lands, facilities and services.
- To maximize the quantity, quality, and efficiency of effort spent in obtaining these objectives.

**Goal 2:** Provide the parks and recreation facilities most needed by the citizens of Hastings and maximize the use of these facilities.

Objectives:

- To maintain the City of Hastings Parks and Recreation Master Plan in current status and to update the plan as necessary.
- To review the Master Plan to determine community needs and desires and to strive to provide facilities in accordance with these needs and desires.
- To work closely with the Barry County YMCA to provide programming and recreational opportunities for Hastings citizens.
- To work with outside groups and agencies to maximize the use of park facilities through schedule optimization.
- To actively promote the parks and recreation facilities available in the City of Hastings.

---

**Goal 3:** Construct, monitor, and maintain the park grounds and facilities in a manner which maximizes the safety of those using, maintaining, or passing near the parks.

Objectives:

- To allow only high-quality materials and construction methods to be used for construction or maintenance of parks and recreation facilities.
- To hire, promote, and train individuals committed to excellence in service, and to provide adequate incentives to ensure that they will continue to strive to maintain quality performance.
- To train, retrain, and monitor park maintenance personnel to ensure safe operation of equipment and interaction with the public.
- To inspect the parks and recreation facilities and schedule and perform necessary maintenance or replacement of facilities as required ensuring all facilities are as safe as possible.
- To monitor legislation and regulatory requirements for provision of facilities and services to ensure all facilities are kept up to modern standards.
- To seek supplemental funding sources to allow continuous improvement to the park system
- To constantly strive for improvement in the services we provide.
- To seek adequate funding, manpower, and other resources necessary to ensure proper oversight and maintenance of the park system and related improvements.

**Goal 4:** To broaden the number and scope of recreational opportunities available to those utilizing the park system and recreational facilities within the City.

Objectives:

- To provide documentation and information regarding grant opportunities and other funding sources for park improvement.
- To complete improvements to the Riverwalk and recreational trails with local forces. Use this work as a match in securing grants from the EGLE, MDNR, CMI, MDOT, and other sources.
- To strive to accomplish the goals contained within the Parks and Recreation Master Plan and to facilitate the projects contained within the plan.
- To monitor potential opportunities for expansion of recreational opportunities and to provide feedback to those able to capitalize on these opportunities.
- To work with agencies advocating community wide recreational programs and to promote the Hastings area as a whole.
- To work closely with the Barry County YMCA as the City's recreation services provider.

## **Annual and Projected Budget**

The City Council annually approves the budget for the park and recreation activity center within the General Fund. Current year and projected annual budgets including for recreation programming and capital improvements are included in Figure 7.

*Figure 7: Park and Recreation Budget*

<b><u>Parks and Recreation (751)</u></b>	<b>FY 2023</b>	<b>FY 2024</b>	<b>FY 2025</b>	<b>FY 2026</b>	<b>FY 2027</b>	<b>FY 2028</b>
<b>Personal Services</b>	<b>Budget</b>	<b>Budget</b>	<b>Projected</b>	<b>Projected</b>	<b>Projected</b>	<b>Projected</b>
Labor Full-time	23,848	23,920	24,638	25,130	25,633	26,146
Social Security Taxes	2,364	2,360	2,364	2,370	2,374	2,380
Comp Time Payout	910	0	200	200	200	200
Cash In Lieu of Benefits	1,200	1,200	1,200	1,200	1,200	1,200
Overtime	3,404	4,985	4,998	4,998	5,020	5,075
Double Overtime	1,452	750	750	750	750	750
MERS Defined Contributions	1,433	1,095	1,100	1,150	1,200	1,250
MERS Defined Benefit Hybrid Plan	1,503	1,417	1,500	1,520	1,540	1,560
Clothing Allowance	100	115	135	135	150	150
Life Insurance	60	58	60	60	62	65
	<b>36,274</b>	<b>35,900</b>	<b>36,945</b>	<b>37,513</b>	<b>38,129</b>	<b>38,776</b>
<b>Supplies</b>						
Operating Supplies	2,500	3,000	3,200	3,400	3,450	3,475
Repair and Maintenance Supplies	3,000	10,000	10,000	12,000	12,500	12,500
Maintenance Supplies - Custodial	2,500	3,000	3,000	3,250	3,300	3,325
Safety Supplies	100	100	100	120	120	125
Small Tools	0	400	250	250	300	300
Clothing	50	0	0	0	0	0
	<b>8,150</b>	<b>16,500</b>	<b>16,550</b>	<b>19,020</b>	<b>19,670</b>	<b>19,725</b>
<b>Other Charges and Services</b>						
Uniform/Laundry Service	275	275	275	280	280	280
Health/Wellness Services	70	70	70	70	75	80
Cell Phone/Stipend	120	120	120	120	120	120
Contracted Recreation Services	30,000	35,000	35,000	35,000	35,000	37,500
Licenses and fees	50	50	50	50	50	50
Permits	75	75	75	75	75	75
Printing and Publishing	700	0	0	0	0	0
Training	200	200	200	200	200	200
Water & Sewer	10,000	10,000	10,400	10,600	10,800	10,900
Waste Disposal	450	450	465	465	480	480
Electric	6,200	6,200	6,200	6,300	6,300	6,300
Natural Gas	1,000	1,000	1,000	1,000	1,100	1,100
Grounds Repair and Maintenance	0	2,500	2,000	2,000	2,000	2,200
Lawn/Landscaping/Weed Control	51,000	60,000	65,000	65,500	66,000	66,500
Tree Trimming and Removals	2,000	5,000	5,000	4,500	4,500	4,500
Contract Line Painting/Pavement Markings	0	1,500	1,500	1,500	1,500	1,500
Building Repair and Maintenance	0	5,000	5,000	5,000	5,000	5,000
Equipment Repair and Maintenance	2,500	2,500	2,500	2,500	2,500	2,500
Property Liability Insurance	1,750	1,750	1,750	1,750	1,750	1,750
Workers Compensation Insurance	850	850	850	850	850	850
Equipment Fund Rentals	20,000	20,000	20,000	20,000	20,000	20,000
Rentals	2,500	2,500	2,500	2,500	2,500	2,500
	<b>129,740</b>	<b>155,040</b>	<b>159,955</b>	<b>160,260</b>	<b>161,080</b>	<b>164,385</b>
<b>Capital Outlay</b>						
Land Improvements-Depreciable	20,000	260,000	50,000	25,000	25,000	25,000
Land Improvements-Non-depreciable	20,000	0	0	0	0	0
Buildings/Bldg. Improvements-Depreciable	500,000	542,200	15,000	15,000	15,000	15,000
Buildings/Bldg. Improvements-Non-deprec.	0	0	0	0	0	0
Equipment/Furniture-Non-depreciable	0	0	0	0	0	0
	<b>540,000</b>	<b>802,200</b>	<b>65,000</b>	<b>40,000</b>	<b>40,000</b>	<b>40,000</b>
<b>Total Parks and Recreation</b>	<b>714,164</b>	<b>1,009,640</b>	<b>278,450</b>	<b>256,793</b>	<b>258,879</b>	<b>262,886</b>



---

## Current Funding Sources

**Taxes.** Consisting of local real estate or property taxes; they are derived by assessing industrial or residential property within the borders of the municipality at a given rate.

**Grants.** Park development has benefited from a variety of grants as shown on the Park Development Grant Summary (Figure 9).

**Fees & Charges.** Consisting of monies collected for program participation and facility rentals. Fees and charges are reviewed annually to assure an equitable system to offset departmental operating costs and provide value to program participants and facility users.

**Gifts & Bequests.** Included are gifts that come from private sources such as foundations, business firms or individuals. These are solicited when accompanying stipulations are such that the gift would be determined beneficial to City responsibilities for the provision of park and recreational services.

## Role of Volunteers and Organizations

Volunteers assist with park maintenance and minor improvements throughout the year. Annually, the Barry County United Way hosts the Day of Caring in which volunteers from all over the county spend the day tackling projects at various government and nonprofits throughout the area. The City has utilized these efforts to have landscaping cleanup, bridge painting, restroom restoration, and playground equipment maintenance completed. The City also receives volunteer assistance from civic organizations and even businesses who have employees who want to reach out to benefit the community.

The City has two park focuses that are maintained nearly entirely by volunteer assistance. The Food Forrest initiative is done completely by volunteer labor. Additionally, the disc golf course at Hammond Hill was constructed and is maintained by volunteers. Apart from the hundreds of hours of volunteer labor at that park, the disc golf course would not be operational. The city also recognizes and appreciates the input of the West Michigan Mountain Bike Association. They maintain the trail and assist with invasive species management at Hammond Hill.

## Relationships with Schools and Other Public Agencies

The schools have sports and recreation programming for students and also make their playgrounds available for public use outside of school hours and during the summer. The City does not have any formal relationship with the school system or other public agencies for the provision of park and recreation access.

# RECREATION INVENTORY

To understand the recreational needs of the City, an inventory and analysis of the existing facilities was completed. The intent of the analysis is to provide a comprehensive perspective of the strengths and weaknesses of the existing recreational opportunities the City has to offer its citizens. The inventory is based on information provided by City leadership, site inspections, and best practices.

## Park Classifications

The National Recreation and Park Association (NRPA) has established generally recognized standards for classifying types of parkland based on size and function which provide a means for determining the primary purpose or use of existing facilities in a community. These designations have been adopted by the MDNR; and provide one method of defining the purpose and use of facilities. Figure 8 delineates the NRPA park classifications that apply to parks in the City of Hastings.

*Figure 8: NRPA Park Classifications*

Park Type	General Description	Service Area	Acres/1,000 Population	Typical Size
Mini	<ul style="list-style-type: none"> <li>Small specialized parks that serve the needs of residents in the surrounding neighborhood.</li> </ul>	< 1/4 mile	0.25 to 0.5 Ac	2,500 s.f. to 1 acre
Neighborhood	<ul style="list-style-type: none"> <li>Basic unit of park system that serves as the recreational and social focus of the neighborhood.</li> <li>Provides both informal active and passive recreation.</li> </ul>	1/4 to 1/2 mile	1.0 to 2.0 Ac	5-10 acres
Community	<ul style="list-style-type: none"> <li>Meets community-based recreational needs.</li> <li>Preserves unique landscapes and open spaces.</li> </ul>	1/2 mile to 3 miles	5.0 to 8.0 Ac	30-50 acres
School Park	<ul style="list-style-type: none"> <li>Facilities located on public school property.</li> <li>Generally used for school athletic programs but are also open to the public.</li> </ul>	Determined by location of School District property		
Natural Resource Areas	<ul style="list-style-type: none"> <li>Lands set aside for preservation for significant natural resources, remnant landscapes or aesthetics.</li> </ul>	Determined by resource availability and opportunity		
Greenways	<ul style="list-style-type: none"> <li>Linear parks generally measured in feet/miles.</li> <li>Can link parks together to create a continuous park.</li> </ul>	Determined by available resources and location		
Special Use	<ul style="list-style-type: none"> <li>Broad range of parks and recreation facilities oriented toward a single-purpose use.</li> </ul>	Variable - dependent on use		
Connector Trails	<ul style="list-style-type: none"> <li>Multipurpose trails that emphasize safe travel for pedestrians to and from parks and around the community. Focus is on both transportation and recreation</li> </ul>	Variable Type 1 - Located outside road ROW Type 2 - Located within road ROW		
On-Street Bikeways	<ul style="list-style-type: none"> <li>Paved segments of roadways that serve as a means to safely separate bicyclists from vehicular traffic.</li> </ul>	Variable Bike Route - designated portions of the road for exclusive use of bicyclists Bike Lane - Shared portions of roadway that provide separation between vehicles and bicyclists		

**Mini Parks.** The City has no mini parks.

**Neighborhood Parks.** A neighborhood park is the basic unit of the park system and typically serves a residential area of ¼ to ½ mile distance. A size of 5-10 acres is considered optimal for this type of park but can be up to 25 acres. The focus is typically on informal active and passive recreational activities. Hastings has three parks classified within this category.

---

**Community Parks.** Community-wide parks serve a broader purpose than neighborhood parks and provide a range of facilities and areas capable of supporting structured and unstructured community participation. These areas typically range between 30-50-acres in size and ½ to 3-mile service radius. They may also contain specialized recreational facilities such as swimming pools, community centers and lighted ball diamonds. Community Parks should be serviced by arterial or connector streets and should be easily accessible from throughout their service area by interconnecting trails. Hastings has three parks classified within this category.

**Natural Resource Parks.** Natural resource areas are lands set aside for preservation of significant natural resources, landscapes, and open space. These sites may be unsuitable for development but other natural resource potential and can support recreational activities at a level that preserves the integrity of the natural resource. The location and size of these parks are largely governed by availability. Hastings has three parks classified within this category.

**Special Use Parks.** Special use parks are areas for specialized or single purpose recreational activities. The specialized recreational activities may include boat launches, swimming beaches, plazas or squares, historic sites, stadiums, urban greenspaces, and nature centers. There are no generally accepted standards for the size or service areas of these parks. Location and size criteria are variable and depend on the specific use of the site.

**Trails and Greenways.** Greenways tie park systems together and form a continuous park environment. The location and size of these parks are largely governed by availability. Trails may be located within parks, on an independent right-of-way, or within the road right-of-way. There are a number of different types of trails that can provide both transportation and recreation opportunities. Connector trails are defined as “multipurpose trails that emphasize safe travel for pedestrians to and from parks and around the Community” (J.D. Mertes and J.R. Hall, Park, Recreation, Open Space and Greenway Guidelines, 1995). These trails are generally located within the road right-of-way and can be divided into two types. Type I has separate paths for different user types, such as pedestrians and bicyclists. Type II has mixed uses and is suited to lighter use patterns. The Riverwalk is a greenway and the main off-road trail facility managed by the City. Other parks such as Tyden, Fish Hatchery, and Bliss have internal paved and nature trails. The Tyden Nature Area also contains a network of crushed gravel nature trails and boardwalk paths.

## Barrier Free Accessibility

Federal and State laws require all areas of public service to be accessible to all persons including those with limited sight, hearing, mobility, and comprehension. Developed park facilities must comply with barrier-free design standards. Park facilities in the City of Hastings have been reviewed to understand the need for improvements relating to barrier-free accessibility. In addition, as park development is considered in the future, barrier free accessibility is a significant priority item to help ensure that recreation can be enjoyed by all residents and visitors of the City. This is the ranking system in accordance with MDNR standards:

- 0 = Completely undeveloped, no paved surface, left in a natural state.
- 1 = None of the facilities in the park meet accessibility guidelines.
- 2 = Some of the facilities meet accessibility guidelines.
- 3 = Most of the facilities meet accessibility guidelines.
- 4 = All of the facilities meet accessibility guidelines.
- 5 = Universal design guidelines were used to design the entire park.

## City of Hastings Facilities

Hastings has a variety of park spaces and other public recreational trails and facilities. Numerous county, private and non-profit facilities are also found within the community and county and are briefly highlighted as part of the inventory. The City of Hastings park system includes 12 sites with a variety of facilities. The City properties can be classified as follows: three (3) neighborhood parks, three (3) community parks, three (3) natural resource areas and three (3) special use parks. There are also three (3) vacant park properties in the City’s ownership. The Hastings School District, although not controlled by the City, also provides recreational facilities to the community.

The Existing Recreation Facilities Map (Figure 10) illustrates the location of public park/recreation areas within the City, the Existing Recreation Facilities Inventory (Starting on Page 23) provides a summary of the facilities provided at each site, and the School Recreation Facilities Inventory (Page 50) provides a summary of the facilities provided by the schools.

## Vacant Land

The City also owns two (2) units of vacant land earmarked for recreation: Approximately 28.8 acres between Apple St and the Thornapple River, and approximately 17.1 acres between Apple St and the Dog Park, adjacent to the City’s wastewater treatment plant. The 28.8-acre site is earmarked for development that may include: trail head, trails, boat access, restrooms, nature trails, and athletic fields.

## Status of Grant Assisted Facilities

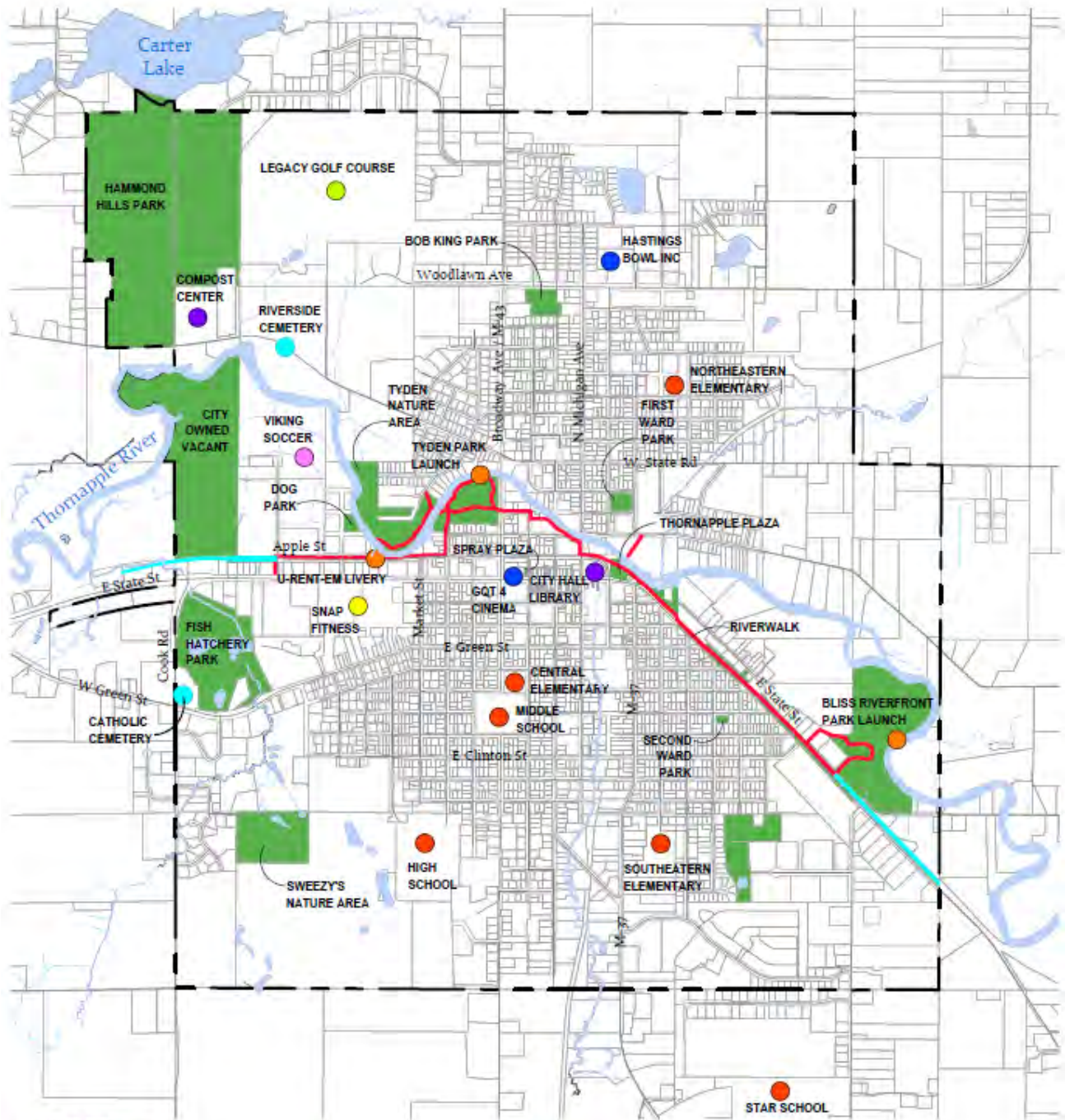
The City has been the recipient of various grants for park improvements including some from the Michigan Department of Natural Resources. Updated post completion reports can be accessed in Appendix A of this report. In summary, the grant status is as described in the following table.

*Figure 9: Grant Status for City of Hastings Parks*




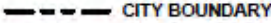


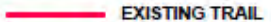




Park Name	Type of Grant	Amount	Project Number	Status
Fish Hatchery	Land & Water Conservation Fund	\$155,627	26-01424	Open to public. Horseshoe pits and tennis courts removed due to age. Other facilities open & active. No conversions.
Fish Hatchery	Land & Water Conservation Fund	\$29,536	26-00837	Open to the public. No changes to the grant funded amenities. Open & in use. No conversions.
Tyden	Bond Fund	\$75,000	BF92-298	Open to the public. No changes to the grant funded amenities. Open & in use. No conversions.
Riverwalk	MDNR Trust Fund	\$284,000	TF99-283	Open to the public. No changes to the grant funded amenities. Open & in use. No conversions.
Riverwalk	MDNR Trust Fund	\$370,000	TF09-111	Open to the public. No changes to the grant funded amenities. Open & in use. No conversions.
Tyden Trail	MDNR Trust Fund	\$244,900	TF11-080	Open to the public. No changes to the grant funded amenities. Open & in use. No conversions.



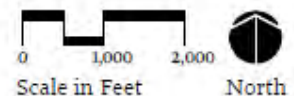
Figure 10: Existing Recreational Facilities



**LEGEND**

- |  |   |  |
|--|---|--|
|  PARKS PROPERTY |  CITY FACILITIES   |  SCHOOLS            |
|  CITY BOUNDARY  |  CEMETERIES        |  GOLF COURSES       |
|  EXISTING TRAIL |  ENTERTAINMENT     |  CANOE/KAYAK LAUNCH |
|  PROPOSED TRAIL |  DANCE AND FITNESS |  |

City of Hastings  
 Parks and Recreation Master Plan  
 Other Recreation Areas and Facilities





---

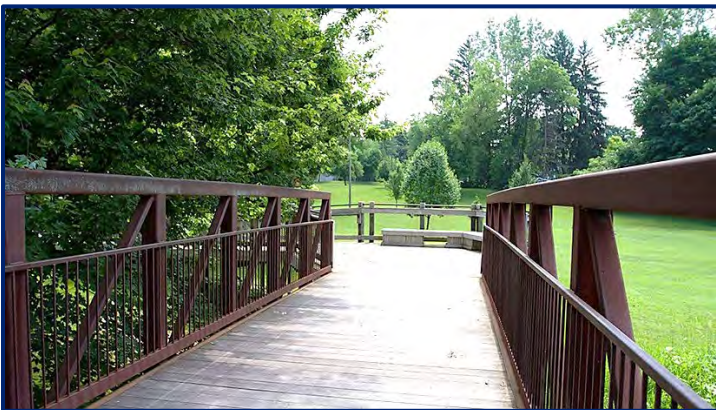
## Inventory of Existing Parks and Recreational Facilities

All parks, natural areas, and other public spaces and recreation facilities within the planning area have been identified in this inventory and as a part of the planning process. The previous Master Park and Recreation Plan was consulted, and a search was made to identify any changes to the inventory. Staff who reside in the planning area and the Park and Recreation committee were also consulted to ensure the information is accurate and up to date at time of publication.

An accessibility assessment was completed at each park or recreation facility operated by the City of Hastings. This assessment was completed by City staff during onsite visits. The 2010 ADA Standards for Accessible Design were used to rank each park. Title III of the Americans with Disabilities Act (ADA): Public Accommodations and Commercial Facilities, recommends four main priorities for accessibility of public spaces. These include, 1) Access approach and entrance, 2) Access to goods and services such as signage and seating, 3) Access to restrooms, and 4) Any other measures necessary, including features such as drinking fountains.



*Fish Hatchery Park Pond*



*Walkway in Tyden Park*



*Sweezy's Nature Area in Autumn*

*Photos showcasing the natural beauty of the parks in the City of Hastings*

## Bliss Riverfront Park

### Description

**Location:** 1035 E State Street

**Size:** 35 Ac

**Accessibility Assessment:** 3

**Park Type:** Community



Bliss Riverfront Park is in the southeast corner of the City adjacent to manufacturing facilities and the Thornapple River. The site features an upper-level gravel parking lot, small pavilion, and trail signage. The lower level of the park includes a canoe/kayak launch, crushed stone trails, paved trails, boardwalks and overlook decks along the river, mowed grass trails, open lawn areas, and a picnic shelter with grills and picnic tables. This park is at the easternmost end of the Hastings Riverwalk, which links to the trail along State Street. A large portion of the site is in the river floodplain and remains mostly undeveloped and in a natural state. A "Food Forrest" is also on the site and operated by community members. The park provides opportunities for observation of flora and fauna.



Facilities	Quantity	Condition
Parking	1	Fair
Nature Trails	1	Fair
Picnic Shelter	1	Fair
Grills	2	Fair
Overlook Deck	1	Fair
Boat Launch to River	1	Fair
Boardwalk	1	Fair
Food Forrest	1	Fair

### Accessibility Assessment

- Parking lot is gravel with many uneven areas, and there are no barrier free parking spaces delineated.
- There are no barrier free paths to the picnic shelters.
- The Riverwalk sections are paved and accessible as well as most of the gravel trails located in the lower level of the park.
- The grills and picnic tables do not have paths to them nor are they designed to accommodate a wheelchair.
- Many of the gravel paths are getting taken over by grass which diminishes access.
- The portable toilet is not barrier free.



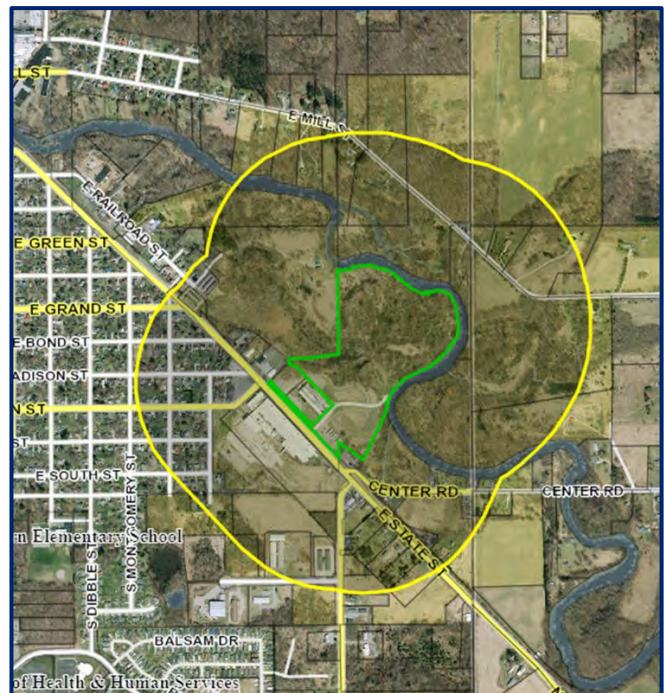
## Needs and Opportunities

- Many of the gravel paths are either turning to lawn or becoming uneven due to settlement. Consider either paving the paths or renovating them to remove the grass and provide a firm level surface.
- Consider adding restroom facilities or changing to a free portable toilet.
- The parking lot is undersized, and the surface is uneven. Expanding the parking lot and either paving it or addressing the uneven areas would improve the look, provide barrier free access, and provide additional capacity.
- Consider marking barrier free parking spaces.
- The canoe launch and area around it has erosion issues. Consider stabilizing the area with rip rap and native vegetation.
- Consider adding playground facilities which would be a compatible use.
- Addition of barrier free grills and picnic tables would allow all users to enjoy the site.

## Maps



*Bliss Park Service Area*



*Bliss Park 1/4 Mile Walkability Radius*



# Bob King Park

## Description

**Location:** 298 W. Woodlawn Ave

**Size:** 3.25 Ac

**Accessibility Assessment:** 2

**Park Type:** Neighborhood



Bob King Park includes a barrier-free wood playground structure built in 1997 through the efforts of The Circle of Friends known as Tangle Town. There is a stone monument with plaques dedicated to the project. There is also a concrete ribbon with children’s handprints leading to the playground. Other facilities include two tennis courts and two basketball courts on a shared surface, a combined shelter and restroom building, a fenced tot lot play area with older equipment set in sand with a second small shade structure, and a multi-purpose ballfield with bleachers. A concrete sidewalk links the park to the residential neighborhood to the south. The parking lot is continuous with the lot for the adjacent Elk Lodge and provides space for 36 cars.



Facilities	Quantity	Condition
Parking	36	Good
Drinking Fountain	1	Fair
Basketball	4	Poor
Tennis	2	Fair
Ball Field	1	Fair
Playground Equipment	2	Fair/Poor
Picnic Shelter	1	Fair
Picnic Tables	20	Fair
Grills	2	Fair/Poor
Restroom Building	1	Fair

## Accessibility Assessment

- Parking lot has barrier free spaces marked with signage.
- There is a paved path between the parking lot and the restroom pavilion and the Tangle Town play structure.
- There is no accessible route to the basketball/tennis courts, or to the baseball field bleachers/player benches.
- Fenced tot lot is not connected by a paved path to it and most of the equipment is not accessible.
- Grills and picnic tables are not accessible. Consider the addition of picnic tables and grills that can accommodate all users.
- Restroom facilities are accessible.
- The baseball field does not have a viewing area near the bleachers for wheelchairs.

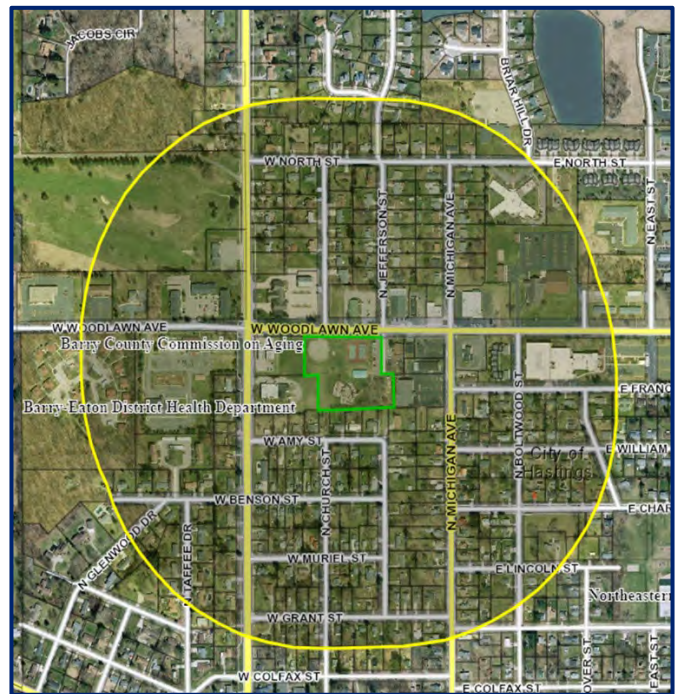
## Needs and Opportunities

- Parking lot and tennis/basketball courts are in good condition. The fence around the courts needs replacement.
- The tot lot equipment and surfacing on the east side of the park does not meet current codes and should be replaced.
- Barrier free pathways should be added to access the basketball/tennis courts, tot lot, and baseball field including the bleachers and player benches.
- The existing pavilion/restroom structure is in good condition and well maintained.
- The Tangle Town play structure is aging and can use repair and some replacement and additional mulch surfacing.
- Bleachers at the baseball field are weathered and not barrier free. Consider replacing with aluminum bleachers and provide viewing space for those in wheelchairs.

## Maps



Bob King Park Service Area



Bob King Park 1/4 mile walkability radius

# Hastings Dog Park

## Description

**Location:** 825 W. Apple St

**Size:** 1.2Ac

**Accessibility Assessment:** 2

**Park Type:** Special Use



The Dog Park is an off-leash park with separate fenced areas for large and small dogs. Dog lovers can come together at the park and talk while their pets run, play, and socialize. The City park is free and open to the public from dawn to dusk. The park also contains a gravel parking lot, mature canopy trees, benches, trash receptacles, waste removal tools, signage, water service, and landscape beds. This park has the potential for future expansion into a regional park with the adjacent 17 acres of City owned vacant property adjacent to and around the river and dog park.



Facilities	Quantity	Condition
Parking	1	Fair
Dog Drinking Fountain	1	Fair
Small Dog Area	1	Fair
Large Dog Area	1	Fair
Gazebo	1	Fair
Dog Agility Facilities	6	Fair

## Accessibility Assessment

- The parking lot is gravel but has a barrier free parking space with a path to the fenced area.
- Parking lot has barrier free parking delineated.
- There is an accessible path between the parking lot and entry points to the fenced dog run areas.
- There are many benches within the fenced dog run areas but not accessible paths to the benches and not hard surface areas for a wheelchair to park.
- The existing pavilion steps up from the ground and is not accessible to wheelchairs.

## Needs and Opportunities

- Either paving the parking lot or adding gravel to level the uneven areas would improve the look of the site and provide greater barrier free access.
- Provide hard surface path to some bench areas and provide seating area for those in wheelchairs.
- Additional benches and picnic tables would provide users additional facilities to enjoy the site.
- Add a ramp to the pavilion to make it accessible.



# Maps



Hastings Dog Park Service Area



Hastings Dog Park 1/4 mile walkability radius



## First Ward Park

### Description

**Location:** Intersection of Hanover and Thorn

**Size:** 2 Ac

**Accessibility Assessment:** 2

**Park Type:** Neighborhood



First Ward Park is located north of downtown and adjacent to the Hastings Manufacturing plant, in what is now the Third Ward. This two-acre park serves an older residential neighborhood south of State Road and east of N. Michigan. The park features some older play equipment that is scattered around the park, a playground area within a mulched area, a sand volleyball court, a popular skate park, a small shade shelter, mature shade trees, open lawn areas, a sidewalk, a drinking fountain, and picnic tables. The skate park is popular with the area youth and heavily used. On-street parking exists on three sides of the park adjacent to the roadways.



Facilities	Quantity	Condition
On Street Parking	3	Fair
Sand Volleyball	1	Fair
Playground Equipment	1	Fair
Skate Park	1	Fair/Poor
Picnic Tables	3	Fair
Grills	1	Fair
Lighting	1	Fair
Drinking Fountain	1	Fair
Picnic Shelter	1	Fair

### Accessibility Assessment

- The playground equipment and playground areas are not accessible with a paved path, and the equipment does not have barrier free access.
- Parking areas do not have designated barrier free spaces and there are no curb ramps or sidewalks from the parking to anywhere in the park.
- There is no accessible path to the sand volleyball court.
- There is an ADA accessible picnic table but there is no accessible path to it.
- Existing drinking fountain height is not accessible to those in wheelchairs.
- Existing grills do not have paths to them nor are they ADA accessible.
- Portable toilet is not ADA accessible.

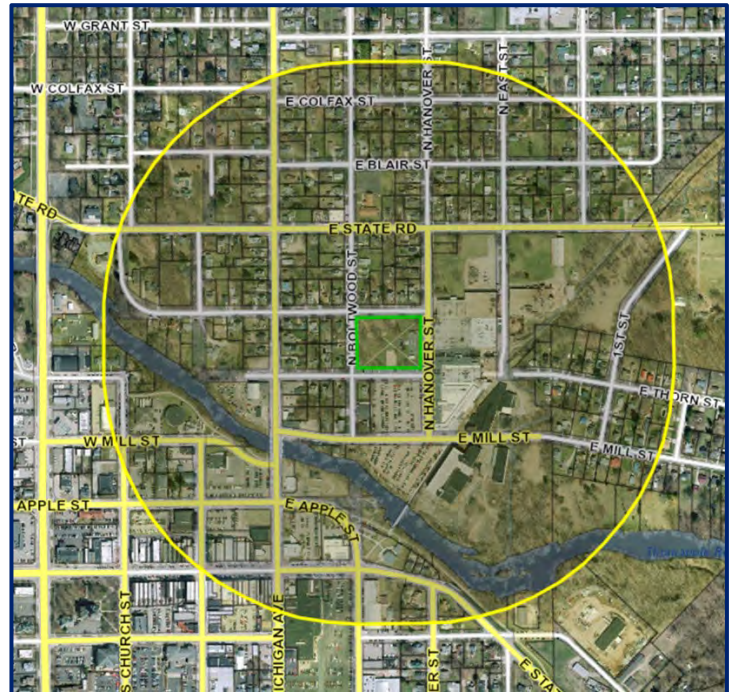
## Needs and Opportunities

- Replace all playground equipment and surfacing and provide hard surface paths to playground areas.
- Designate barrier free parking spaces and add accessible curb ramps and paths to access the park.
- Provide accessible routes to all park facilities.
- Existing sidewalks that cross the site have sections that are in bad shape and need to be replaced.
- Consider adding restroom facilities or change the portable toilet to an accessible one.
- The skate park structures are wearing. The sand volleyball court is in good shape.
- Consider adding seating areas or benches for viewing.
- Park would benefit from the addition of a second pavilion near the playground areas.
- Replace drinking fountain with an ADA accessible one.
- Consider adding benches within the park.

## Maps



First Ward Park Area



First Ward Park 1/4 mile walkability radius

## Fish Hatchery Park

### Description

**Location:** 1011 W. Green St

**Size:** 38 Ac

**Accessibility Assessment:** 3

**Park Type:** Community



Fish Hatchery Park contains a range of facilities including a paved parking area for over 150 cars, two picnic shelters, two restroom facilities, a lighted softball field with bleachers, soccer field with bleachers, basketball court, trails, and playground. The site features a series of four ponds and a creek which flows through the site from south to north. A fishing dock is provided for youth fishing. The park is adjacent to Pennock Hospital and is used for wellness programs and exercise. The park also includes game tables, picnic tables, and a fountain. An early 1900's building exists on site and is used for events, meetings, and YMCA summer programs.

Facilities	Quantity	Condition	Facilities	Quantity	Condition
Paved Parking	196	Good	Restrooms	2	Poor
Paved Trail	1	Fair/Poor	Picnic Tables	66	Fair
Basketball	1	Fair	Lighting	28	Fair
Historic Building	1	Fair	Grills	2	Fair
Playground Equipment	1	Good	Drinking Fountain	2	Fair
Baseball Field	1	Fair	Ponds	5	Fair
Soccer Field	1	Fair	Picnic Shelters	2	Fair
Disc Golf	1	Fair			

### Accessibility Assessment

- The parking lot has barrier free spaces marked.
- The playground equipment is not accessible, and the play surfacing is not considered a barrier free surface.
- Restrooms are not accessible.
- There is an accessible path that traverses the site and connects most facilities, however, there are a few facilities such as the baseball field that do not have an accessible route.
- Grills, picnic tables, and benches do not accommodate those in wheelchairs.
- Bleacher areas do not accommodate space for wheelchairs.
- There is a special swing designed for a person who uses a wheelchair, but there is no paved path to it.



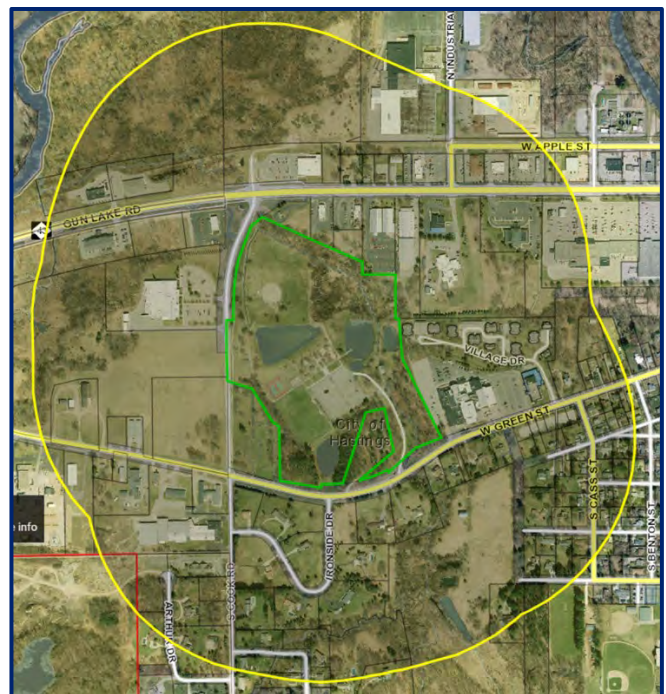
## Needs and Opportunities

- Sections of the asphalt trail are in bad shape and need repair.
- The parking lot pavement was recently resurfaced.
- The pavilion nearest to the ballfield is in poor condition, has a hole in the roof, and has many areas of the structure falling apart.
- Playground equipment is nearly new.
- Light poles and signs at the baseball field are aging and need to be replaced or renovated.
- This is a mature park and needs general maintenance and upgrades to the pavements, structures, and lawn areas.

## Maps



*Fish Hatchery Park Area*



*Fish Hatchery Park 1/4 mile walkability radius*

# Hammond Hills Park

## Description

**Location:** 889 Hammond Rd

**Size:** 76 Ac

**Accessibility Assessment:** 1

**Park Type:** Natural Resource



Hammond Hills Park is the City’s largest recreational site covering 76 acres in the northwest corner of the City. Only a small portion of the site is currently developed with a disc golf course, a mountain bike trail, and a nature trail network, known as Zhigaawin Hiking Trail, leading through rolling woodland to Carter Lake. The remainder of the site is mixed pasture and woodland. The site provides wonderful opportunities to explore nature, view wildlife and flora, and go hiking or biking. The site includes a gravel parking lot and site signage.



Facilities	Quantity	Condition
Gravel Parking	1	Fair
Picnic Tables	20	Fair
Lake Access	1	Fair/Poor
Disc Golf Course	1	Good
Mountain Bike Trail	1	Fair
Nature Area	1	Fair
Portable Toilet	1	Fair

## Accessibility Assessment

- Other than a gravel parking lot, this park does not have accessible facilities.
- The parking lot surface is accessible but does not have barrier free parking spaces marked.
- There are no paved paths on the site.
- Existing picnic tables do not support wheelchair access. Consider adding ADA compliant picnic tables.
- The site includes an ADA compliant portable toilet.



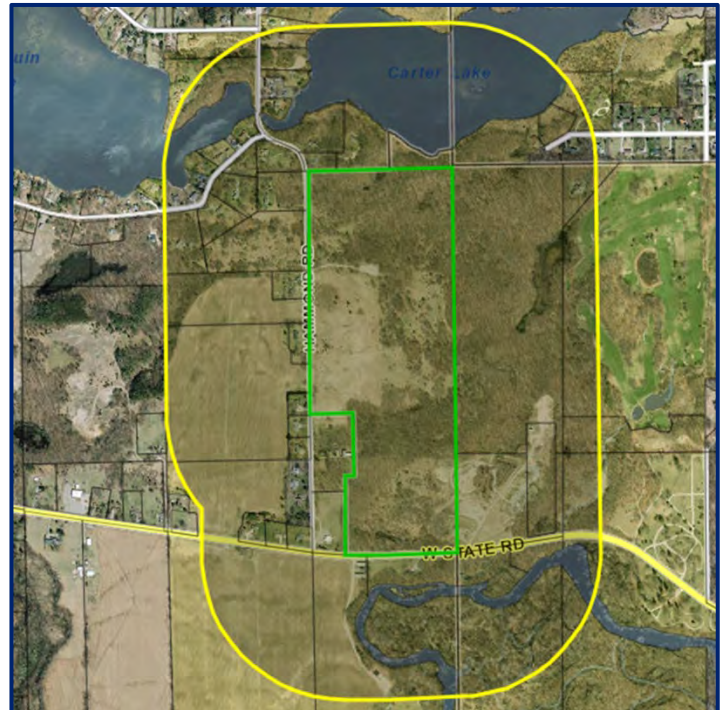
## Needs and Opportunities

- Consider marking barrier free spaces.
- Providing paved pathways from the parking lot and around the park would provide barrier free access for all to enjoy the site.
- The addition of a restroom building and trailhead would enhance the site.
- Many areas around the disc golf course need maintenance to restore the turf areas that are worn and eroded from use.
- The addition of a pavilion, picnic tables, and grills would provide opportunities for family gatherings and potential rental income.
- Benches and picnic tables in the disc golf area allow users to rest.
- Opportunity for interpretive signage.

## Maps



*Hammond Hills Park Area*



*Hammond Hills Park 1/4 mile walkability radius*

# Hastings Riverwalk & Pocket Park

## Description

**Accessibility Assessment: 4**

**Park Type: Greenway**



The Hastings Riverwalk provides a green corridor from the east side of the City at Bliss Riverfront Park to the west side of the City at Apple St / Industrial Park Drive for about 2.2 miles. The linear park connects Bliss Park, Thornapple Plaza, downtown, and Tyden Park and provides a 10' paved trail, river access, overlook decks, seating areas, lighting, and trail signage. The Riverwalk is also part of the regional Paul Henry Trail system that goes from Grand Rapids to Vermontville. The pocket park sits along the Thornapple River and Apple St north of Thornapple Plaza and the Library. The park includes a loop trail, seating areas, picnic tables, and an overlook deck.



Facilities	Quantity	Condition
Non-Motorized Trail	1	Fair/Good
Lighting	9	Good
Overlooks	2	Fair
Picnic Tables	3	Fair
Nature Areas	1	Fair

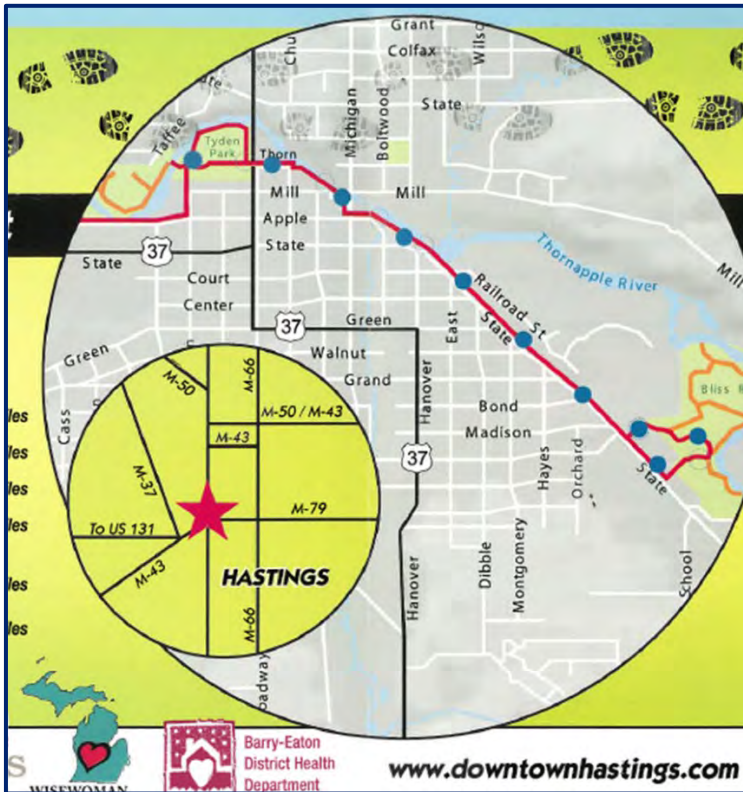
## Accessibility Assessment

- The overall trail is considered barrier free with paved surfaces for the length of the trail.
- Site furnishings and overlook decks are barrier free and connected to the trail.
- Road crossings are at signalized intersections with curb ramps.

## Needs and Opportunities

- Additional benches, trail signs, and bike racks would enhance the trail.
- Safety improvements need to be made crossing M-37/M43.
- Explore opportunities to extend the trail to the east on City owned property.
- Consider the development of a formal trailhead and parking area on the west side of the City.
- Consider adding bike repair stations along the path.

# Maps



Hastings Riverwalk and Pocket Park Area



## Second Ward Park

### Description

**Location:** Intersection of Montgomery and Bond

**Size:** 0.6 Ac

**Accessibility Assessment:** 1

**Park Type:** Neighborhood



Second Ward Park is a small neighborhood park in a residential neighborhood in the southeast area of the City. The park is surrounded by single family homes and facilities include a mix of play equipment, some of which is very old, a small basketball court, sand play area, light pole, picnic tables, and limited grass space. There is a more modern modular play piece as well as a merry-go-round in a wood surfaced play area, with other older stand-alone play equipment and swings scattered across the site. The park is mostly open and contains a few large mature canopy trees. There is no parking lot; users either park along the street or walk to the park.



Facilities	Quantity	Condition
Lighting	1	Fair
Basketball	1	Fair/Poor
Playground	1	Fair
Picnic Tables	2	Fair

### Accessibility Assessment

- There are no accessible paths in the park.
- The modular playground includes an ADA transfer station, but the structure has no ramps, and there is no ramp transition into the play area in general.
- There are no paths to the basketball court or other playground equipment in the park.
- Most of the playground equipment is not accessible.
- Picnic tables do not accommodate a wheelchair.

### Needs and Opportunities

- Replace old playground equipment.
- Provide sidewalks along the park edges at the road and provide accessible routes within the park to all facilities.
- The play surface for the modular playground needs a transition ramp and renovation to level and remove organic material.
- Some areas of the basketball court pavement have large cracks with grass growing through, consider mill and resurface.
- Provide a restroom structure or add an accessible portable toilet.
- Consider adding benches and a drinking fountain.





# Spray Plaza

## Description

**Location:** Corner of State and Church

**Size:** 0.08 Ac

**Accessibility Assessment:** 4

**Park Type:** Special Use



The spray plaza has a small pocket park adjacent to the GQT Hastings Cinema. This park includes a restroom structure that doubles as a stage area, amphitheater seating, water spray jets for water play, seating areas, landscaping, decorative paving and walls, seat walls, ADA drinking fountain with dog bowl, lighting, and art display. On-street parking is available along State Street, Church Street, or in City lots 4 and 5 behind the park. This park is very popular in the summer with water spray use, Hastings Live events, and other City festivals and gatherings.



Facilities	Quantity	Condition
On-street parking	4	Fair
Restrooms	1	Fair
Splash Pad	1	Fair
Benches	4	Fair

## Accessibility Assessment

- This is a newer park that meets barrier free standards.
- Facilities are accessible including the restrooms and the switch for the water jets.
- Adjacent road crossings have pedestrian signals, crosswalks, and curb ramps.
- There are sidewalks that connect to the existing parking areas.

## Needs and Opportunities

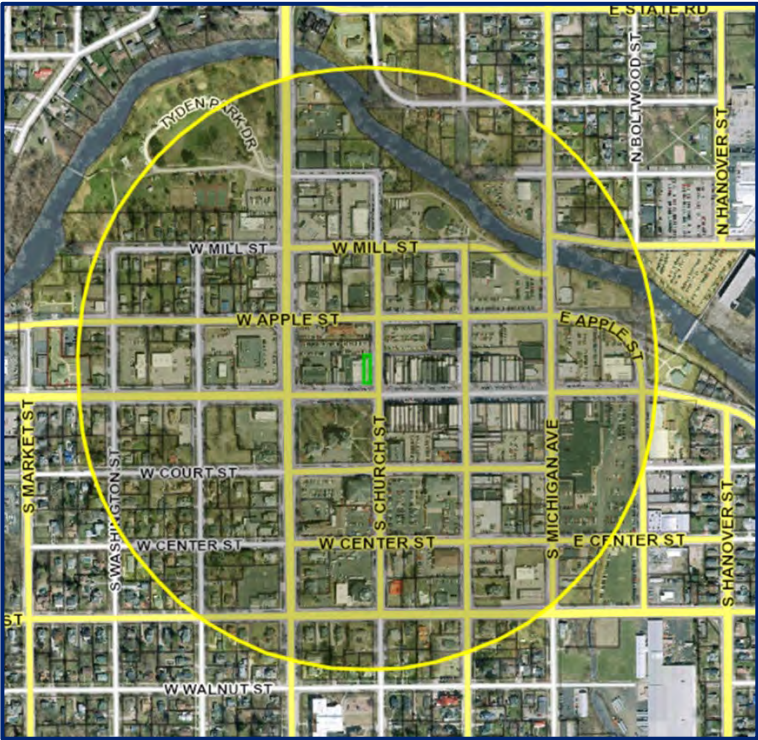
- The only need is for continuous maintenance of the paved surfaces, landscaping, and plumbing equipment for the water spray jets.



# Maps



Spray Plaza Park Area



Spray Plaza 1/4 mile walkability radius

## Sweezy's Nature Area

### Description

**Location:** Ridgewood Dr / South of Highschool Fields

**Size:** 19.15Ac

**Accessibility Assessment:** 1

**Park Type:** Natural Resource



Sweezy's Nature Area features winding rustic footpaths and hiking trails through the hills, woods and wetlands surrounding the pond that gives the park its name. The park's trails offer a pleasant hike for all ages. Its woods and wetlands host a variety of birds and other wildlife for both the seasoned and budding naturalist to enjoy. An entrance to the park can be found south of the Hastings High School football practice field located near the intersection of Clinton and Cass streets. Another entrance is located at the end of Ridgewood Drive, which is in a residential neighborhood off Cook Road. There is one wooden bench within the site. There is no signage, which makes the park hard to find. The school district also uses the site as an outdoor classroom for instruction and to study native flora and fauna.



Facilities	Quantity	Condition
Nature Trails	1	Fair
Bench	1	Fair
Ponds	2	Fair

### Accessibility Assessment

- There are no paved trails in the park as it is all dirt pathing.
- There is no designated parking area for the site and therefore no barrier free parking.
- Other than the one older wooden bench, there is no place to stop, rest and sit. This would be helpful to older individuals, families with kids, and those with difficulty walking.

### Needs and Opportunities

- Consider adding a paved trail section for barrier free access to the pond.
- Consider boardwalk and overlook decks around the pond to increase water access.
- Some of the dirt paths are eroding and need grooming.
- Consider adding a pavilion for outdoor classroom or for special event rentals.
- Opportunity for interpretative signage to tell the story of the history of the site as well as the existing flora and fauna.
- Provide a site identification sign to increase awareness.
- Consider benches and picnic tables to allow for seating areas.







# Thornapple Plaza

## Description

**Location:** 301 E State St

**Size:** 1 Ac

**Accessibility Assessment:** 4

**Park Type:** Special Use



Thornapple Plaza is a very popular site for the community to gather and recreate. The site features a full band shell/stage with sound, lighting, and storage, concession stand, public restrooms, amphitheater seating, walking paths, landscaping, connection to the Riverwalk, pedestrian lighting, parking, and art display. The seating area can hold up to 1,000 spectators. The site is home to Hastings Live community performances put on by the Thornapple Arts Council and is free to the public, as well as the popular Summerfest Concert Series. The performances run all summer between June and August. The project was made possible by a generous donation from a local philanthropist.



Facilities	Quantity	Condition
Paved Parking	14	Fair
Amphitheater/Stage	1	Good
Restrooms	1	Good
Access to Riverwalk Trail	1	Fair
Concessions	1	Good
Bike Racks	1	Fair
Lighting	1	Good
Programmed Entertainment	1	Fair
Art Display	1-2	Fair

## Accessibility Assessment

- The site was recently constructed in 2016 and meets barrier free standards.

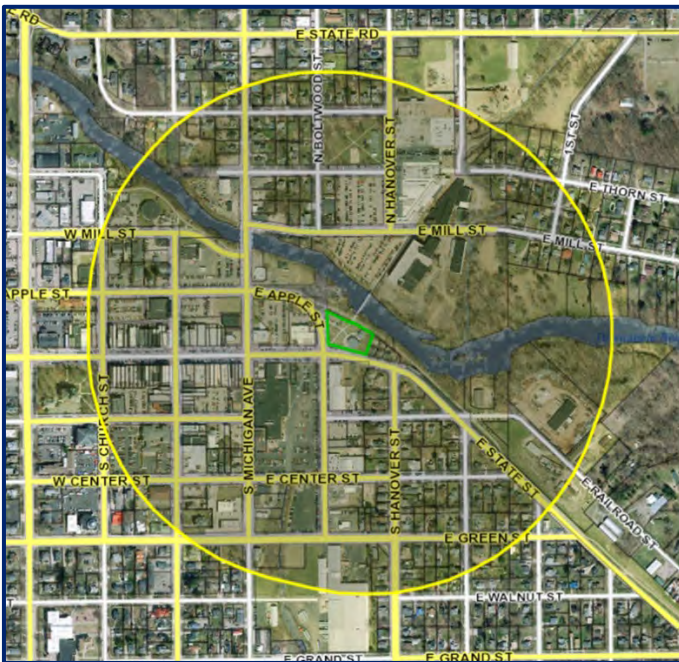
## Needs and Opportunities

- Consider removing barrel style trash cans and replace with decorative bins to match Riverwalk and downtown style.

# Maps



*Thornapple Plaza Area*



*Thornapple Plaza 1/4 mile walkability radius*

# Tyden Nature Area

## Description

**Location:** North Side of Thornapple River

**Size:** 17 Ac

**Accessibility Assessment:** 3

**Park Type:** Natural Resource



Tyden Nature Area is the western extension of the more traditional Tyden Park. The site features crushed stone and boardwalk trails through the wooded wetlands along the banks of the Thornapple River and two fishing/overlook decks. The paths connect to the pedestrian bridge in Tyden Park. There are also some mowed grass paths through the area. The site offers opportunities to enjoy nature and observe flora and fauna as the vegetation is thick in some areas. Users are also able to get to the water’s edge to fish or even dip their feet in the water. It is common to observe people floating down the river in kayaks or inner tubes during the summer as the canoe livery is across the river and viewable from the area.



Facilities	Quantity	Condition
Nature Trails	1	Fair/Poor
Riverwalk	1	Fair
Boardwalk	2	Fair/Poor
Overlook Decks	2	Poor
Seating Areas		Fair

## Accessibility Assessment

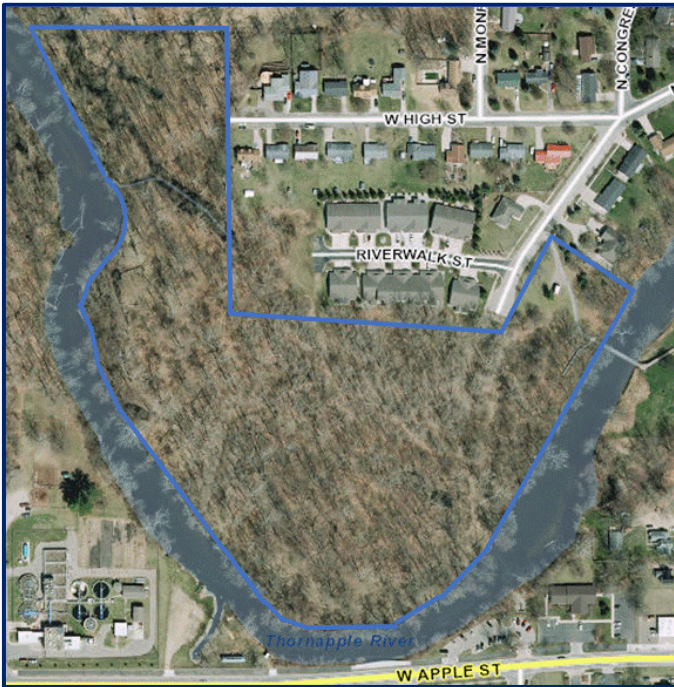
- Most of the trails have a barrier free surface.
- One of the overlook decks is not accessible as there is a step up into the deck, which is likely due to settling or heaving of the deck or path.
- There are few opportunities for seating to stop and rest.
- There is no dedicated parking for this area, most either walk to the site from their homes or use the parking in Tyden Park, which is a bit of a walk which might be difficult for some.

## Needs and Opportunities

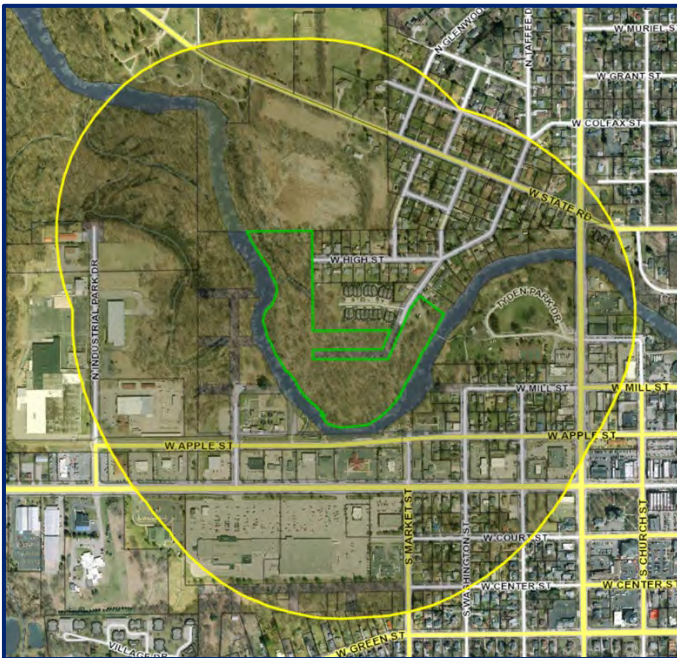
- On-going maintenance and grooming of the trails.
- Consider providing a ramp for the overlook deck that now requires a step up to access.
- Consider adding benches for seating and rest stops along the paths.
- Consider adding lighting for security.
- Interpretive signs would make a nice addition to the trail experience.
- Trail signage for distance and location would be beneficial to help navigate the paths within the wooded areas



## Maps



*Tyden Nature Area*



*Tyden Nature Area 1/4 mile walkability radius*



# Tyden Park

## Description

**Location:** 404 N Broadway

**Size:** 11 Ac

**Accessibility Assessment:** 3

**Park Type:** Community



Tyden Park is located along the Thornapple River and includes a looped driveway with parking, paved multi-purpose trail loops, overlook/fishing deck, two group picnic shelters, a canoe launch, sand volleyball court, soccer field, limited older play equipment, modern restroom building, picnic tables, maintenance building, two basketball courts, and two tennis courts. A pedestrian bridge leads across the river to the Tyden Natural Area, with a paved link to the adjacent residential neighborhood. The park also features a veteran’s monument. The park includes many mature shade trees, access to the river, and a connection to the Riverwalk. The park also has decorative park themed swing gates.

Facilities	Quantity	Condition	Facilities	Quantity	Condition
Paved Parking	106	Fair	Restrooms	1	Fair
Non-Motorized Trail	1	Fair	Picnic Shelters	2	Fair
Playground Equipment	4	Fair/Good	Picnic Tables	35	Fair
Basketball	1	Poor	Lighting	6	Fair
Tennis Courts	1	Poor	Grills	4	Fair
Sand Volleyball	1	Fair	Riverwalk	1	Fair
Play Field	1	Fair	River Access	1	Fair
Pedestrian Bridge	1	Fair	Veteran’s Memorial	1	Good

## Accessibility Assessment

- The parking lot has dedicated barrier free spaces.
- There are internal trails within the park, however there are no paths from the parking lot to any facility within the park.
- There are no accessible routes connecting the west pavilion, playground equipment, or volleyball court.
- Tennis and basketball courts sit on high ground and are only accessible from the park’s east side.
- Picnic tables and grills are not accessible.
- Playground equipment is not accessible.
- Restrooms are accessible and barrier free.
- Drinking fountain is accessible and barrier free.

## Needs and Opportunities

- Replace all playground equipment.
- Provide accessible route from the parking lot areas to all facilities.
- Provide accessible routes to the picnic pavilions and sand volleyball court.
- Provide accessible and barrier free grills and picnic tables.
- Provide hard surface viewing areas for wheelchairs at the soccer field and sand volleyball.
- Soccer field needs to be regraded and leveled for play. Soccer goals need nets.
- Tennis courts have large cracks, consider milling and resurfacing or replacement.
- Parking lot could benefit from being milled and resurfaced.
- Boat access area is eroding and needs to be stabilized with rip rap and vegetation.
- The west-most pavilion is very old and should be replaced.
- Consider adding lighting to improve safety.

## Maps



*Tyden Park Area*



*Tyden Park 1/4 walkability Radius*

---

## School Facilities

Public school facilities, including playgrounds and sports fields and courts, can add tremendous recreational value to a community. Elementary school sites constitute a portion of the neighborhood parks and playgrounds in the City. Since these areas are beyond the jurisdiction of the City of Hastings, a detailed account of each site is not available, however the types of facilities at each school are listed below. There are five (5) public school sites located within the City of Hastings, and one (1) public school site located outside the City limits providing additional recreation opportunities for community residents.

**Hastings High School** is located on a 54-acre site in the southwest of the City. Facilities include ballfields, football (including an artificial turf field), soccer, tennis courts, track, gymnasium, and auditorium. The High School campus is also home to the Community Education & Recreation Center, which features a community swimming pool with scheduled lap and open swim times as well as swim classes, a gym and Cardio Exercise Room, game room and a number of programs including yoga, fitness classes, camps and aquatics.

**Hastings Middle School** is centrally located, just north of the downtown area. The site includes play equipment, hard surfaced play area and a grass recreation area with a number of backstops. These fields are generally in poor condition and not used for ball games on a regular basis. A large Auditorium is available for school and community events.

**Central Elementary School** is contiguous with the Middle School site. Outdoor facilities include play equipment and hard-surfaced play area.

**Northeastern Elementary School** occupies 8.4 acres of land in a traditional residential neighborhood. Facilities include two soccer fields, which are heavily programmed for YMCA Soccer games and practices, two ball fields which are again heavily used by the YMCA youth sports programs, basketball, volleyball and play equipment. The site is also informally used by residents in the winter months for sledding.

**Southeastern Elementary School** is located at 1300 S East St and has 2 soccer fields, a ball diamond, basketball, and play equipment on 14 acres of land.

**Star Elementary** is a 27.5-acre site located outside of the City limits but is within the Hastings School District. It is located at 1900 Star School Rd, and facilities include a soccer field, baseball field, playground equipment, and a gaga pit.

## Cemeteries

There are two (2) cemeteries located in the City. One cemetery is a privately owned Catholic Cemetery located at the intersection of Green St. and Cook Rd and adjacent to the west side of Fish Hatchery Park. The second cemetery is the City owned Riverside Cemetery which is bisected by West State Road in the northwest area of the City with the southern portion of it adjacent to the Thornapple River and the northern portion adjacent to the Hastings Country Club. The City has developed a master plan for the cemetery which includes recreational facilities such as walking paths and seating areas.

## Semi-Public Recreational Facilities in the City

**Commission on Aging** is located on West Woodlawn and promotes “independence, dignity and quality of life to the aging population and their families”. Services provided include Meals on Wheels, adult day

---

care, medical transportation assistance and a full range of activities such as music, dance, crafts, exercise and games.

**Pennock Health & Wellness Center** on West Green Street, is a membership-based indoor recreation facility offering gym, pool and fitness services open seven days a week. Programming includes aquatic fitness, spinning, conditioning, yoga, Pilates and special children's and seniors' programs.

## Private Recreational Facilities in the City of Hastings

Privately owned and operated facilities used for recreation in the City include the following:

- Barry Community Enrichment Center
- Expressions Dance Center
- Deep Water Grappling and Striking House
- Hastings Bowl Inc
- Legacy at Hastings Golf Course
- U-Rent-Em Canoe Livery
- Snap Fitness
- The Other Body Shop

## Regional Recreational Facilities

There are a wide range of regional recreational facilities available to City of Hastings residents within close proximity. Barry County is characterized by numerous inland lakes, rivers, and rolling terrain mixed with upland forests. Over 250 lakes are in the county, offering recreational and wildlife opportunities. The following describes available regional facilities:

**Barry State Game Area** (State of Michigan) covers 13,000 acres adjacent to the State Park. Both the State Game Area and part of the Recreation Area are open for hunting waterfowl, small game, and white-tailed deer. Deer and small game hunting attract local residents as well as in and out of state visitors.

**Yankee Springs Recreation Area** (State of Michigan) is a 5,200-acre facility located on the central western edge of Barry County, providing diverse recreation opportunities. A modern campground is located on the shores of Gun Lake while rustic camping is available at Deep Lake. An equestrian campground and a youth organization campground are also available. Nine lakes are located within the park boundaries providing excellent "shing and water sports of all kinds. Facilities include 30 miles of hiking trails (including a portion of the North Country National Scenic Trail), 12 miles of challenging mountain bike trails, 9 miles of horseback trails, as well as two public beaches, picnic shelters, and two accessible fishing piers one at Gun Lake and one at Deep Lake. Special features include the Devil's Soup Bowl, Graves Hill Overlook and The Pines. Winter sports facilities include 10 miles of cross-country ski trails, snowmobile trails and lake access for ice fishing.

**Middleville State Game Area** (State of Michigan), located in Barry County's north-west quadrant, provides an additional 4,000 acres of hunting, picnicking and wildlife viewing area.

**Historic Charlton Park Village and Recreation Area** (Barry County) is located on Thornapple Lake approximately 5 miles southeast of the city, just north of Highway M-79. Approximately 20 acres of the 322-acre park is devoted to the Historic Village. The Village contains a museum and 22 restored buildings,



---

all originally from Barry County. Approximately 80 acres of the Park are devoted to active and passive recreation. Facilities include a boat launch, swimming beach, two volleyball courts, a pavilion, two picnic shelters, several picnic oases, a softball diamond, two playground areas, and a ski and Jet Ski beach. The remaining 200 acres are primarily wooded, grassed or wetland with approximately 2 miles of marginally improved trails. The Historic Village and surrounding grounds are also the staging for approximately 20 special events throughout the year, attracting visitors from throughout the region.

**McKeown Bridge Park** (Barry County) is located 2 miles southeast of Hastings on the Thornapple River is a 2-acre special use park centered on a refurbished historic bridge utilized for walking and fishing, a canoe launch and picnic facilities. Planned improvements and expansion into an adjoining 23-acre riverside parcel were completed in 2010.

**The North Country National Scenic Trail** is a multi-state hiking trail that stretches 4,500 miles from North Dakota to the New York/Vermont border. The trail enters Barry County north of Irving and travels south using portions of the Paul Henry Trail, then crosses through the Yankee Springs Recreation Area and Barry State Game Area.

**The Paul Henry Thornapple Trail** follows the scenic Thornapple River from 44th Street and Kalamazoo Avenue in Grand Rapids to Middleville, Hastings, Nashville, and Vermontville with large gaps to be acquired for a total of around 43 miles. The Village of Middleville has 3.85 miles of paved trail and 1.25 miles of unpaved trail. Other unimproved portions of the trail are owned by Barry County and the City of Hastings (including trail right of way west of the City limits) some of which is open for public use.

## **Semi-Public Recreational Facilities Outside the City Limits**

**Barry Expo Center**, 1350 N. M-37, Hastings. Owned and operated by the Barry County Agricultural Society, this complex includes several barns for 4-H and County Fair use as well as a ¼ mile dirt oval track for horse, motor-cross and car racing and an expo hall available for rent. Besides the annual County Fair, the complex also hosts a variety of events and shows throughout the year.

**YMCA of Barry County and Camp Algonquin**, 2055 Iroquois Trail, Hastings. Located on the shores of Algonquin Lake, 2 miles northwest of the city, the YMCA provides youth and adult sports programs, summer playground programs and youth social programs sponsored by the City of Hastings. Camp Algonquin provides summer resident and day camps and a facility for community use.

**Circle Pines Center**, Mullen Road, Delton. Circle Pines Center is a member-owned and run non-profit cooperative organization featuring a children's summer camp and year-round retreat and conference center with programs for families, children and adults.

**Long Lake and Chief Noonday Outdoor Centers.** Each facility occupies 100 acres in the Yankee Springs Recreation Area and is administered by the Michigan DNR and Yankee Springs Outdoor Centers, LLC, a private concessionaire. Both centers have rustic cabins that are open year-round serving organized groups as well as individuals.

**Pierce Cedar Creek Institute**, 701 W. Cloverdale Rd., Hastings. Set on more than 660 acres, Pierce Cedar Creek Institute, an ecological education center, provides visitors with a unique exposure to a rare blend of diverse habitats including wetlands, forests, marshes, streams, lakes and prairies. Visitors can explore over five miles of nature trails, participate in programs and classes or stop by the Visitor Center.

**Gun Lake Tract**, Marsh Road, Orangeville Township. This 360 Acre conservation area featuring upland and lowland woodlands, peat bog, emergent wetlands, and grasslands, is owned and managed by the Ruffed Grouse Society. It is open daily, free of charge, for hiking, bird watching, tree and wildlife identification. Guided group tours and educational programming are available through the Barry Conservation District. Hunting rights belong to the Ruffed Grouse Society.

**Michigan Audubon Otis Sanctuary.** This 120-acre wildlife sanctuary borders Glass Creek and has a canoe access.

**Michigan Audubon Warner Sanctuary.** This heavily wooded, 100-acre wildlife sanctuary located 5 miles S.W. Of Hastings, hosts one of the County’s last remaining stands of old growth forest.

**Maher Sanctuary.** Owned by Grand Rapids Audubon, this 76.8-acre sanctuary is located at the intersection of 108th St and Wood School Road. It has a mix of habitats, including frontage on Crane Creek, with a parking area and hiking trail.

**Southwest Michigan Land Conservancy Carter Lake Preserve.** This 60-acre preserve located on the northern shore of Carter Lake, is just outside the City of Hastings. The site features 1.5 miles of trails through a variety of habitats; including marsh, fen, oak woodland, and savanna.

**Barry Conservation Club**, W. Green St., Hastings. Features a clubhouse, horseshoe pits and shooting ranges just west of the city limits.

**Flying Horseshoe Ranch**, S. Yankee Springs Road, Middleville. Offers Horseback riding in the Yankee Springs Recreation Area

## Private Recreational Facilities Outside the City Limits

### Boat Launches

Baker Lake Public Access

DNR Public-

Thornapple/Gun Lake

Gun Lake

Historical Charlton Park

Jordan Lake

Long Lake

Thornapple Lake

Thornapple River – Irving Rd

Winding Creek

Whispering Waters

### Clubs

American Legion Post 45

American Legion Post 484

Caledonia Sportsmen Club

Delton Lions Club

VFW Post 422

VFW Post 8260

Tyler Creek

Yankee Springs

### Health Clubs

Gun Lake Fitness

Hastings Flip Club

Max Effort Performance

Middleville Fit Body Boot Camp

TTS Fitness

Yoga Zen

### Campgrounds

Camp Thornapple

Camp Michawana

Deep Lake

Indian Valley

Jones Lake

Rivergate Family

Sharp Park

Welcome Woods

### Entertainment

Buddy’s on the Beach

Hastings Roll-a-Rama

### Golf Courses

Centennial Acres

Gun Ridge

Mullenhurst

Saskatoon

### Museums

Benard Historical Museum

Freeport Historical Society

Gilmore Car Museum

### Nature Areas

Carter Lake Preserve

Dolan Nature Sanctuary

Pierce Cedar Creek Institute

# THE PLANNING & PUBLIC INPUT PROCESS

During the early phase of the planning process, background data was gathered from site investigations and available reports in order to develop a current snapshot of the City and a comprehensive understanding of the needs of the community. This chapter looks to assess community need for parks and recreation facilities against facility availability and program offerings. There are a variety of methods for accessing community need for recreation services.

## Planning Methods

It is important for an identifiable planning method to be used in a strategic plan such as this. Each time planning efforts are implemented, the system is reevaluated to measure success and to guide future planning goals. The City is in the process of transitioning to using the NRPA’s Park Metrics, however with only a single year of data to include, there are few comparables at this time. Instead, we have chosen to use the former NRPA Areas and Facilities Standards to be consistent with our past planning methodology. A comparison of the standards with our existing facilities is in the table below. The current facilities meet or exceed most standards although some growth is recommended.

*Figure 11: NRPA Areas and Facilities Standards and Existing Facilities*

Facility	NRPA Guideline	NRPA Recommendation	Facilities Provided	Surplus (Deficit)
Picnic Shelters	1:2,000	4	7	3
Tennis	1:2,000	4	3	(1)
Playground	1:3,000	3	6	3
Baseball	1:5,000	2	2	0
Gymnasium	1:5,000	2	0	(2)
Softball	1:5,000	2	0	(2)
Basketball	1:5,000	2	7	5
Volleyball	1:5,000	2	2	0
Soccer	1:10,000	1	1	0
Football	1:20,000	0	0	0
Running Track	1:20,000	0	0	0
Swimming Pool	1:20,000	0	0	0
Ice Rink (outdoor)	1:20,000	0	0	0
Auditorium	1:20,000	0	1	1
Community Center	1:20,000	0	0	0
Bicycle route	1 System	1	1	0

The above table does not include facilities provided by the Hastings Schools District. They also provide outdoor facilities that are typically open to the public when not in use for school purposes. This includes playgrounds, soccer fields, tennis courts, ball fields, running track, gymnasium, and a pool.

This plan was developed during a four-month period between September 2023 and January 2024. The planning process began with evaluation of previous master plans, city demographics and considerations from public input and parks staff. The plan was guided by the City Manager with assistance from the Public Services Department and the Park and Recreation Committee. A survey was distributed to gain



---

public input on the parks and recreational opportunities and solicit specific and broad insight from local and regional community members. Once the draft was drawn up and completed, it was made available and the public was once again given an opportunity to provide feedback.

## Public Input

The City of Hastings encourages its residents to take an active role in planning for their community's recreational opportunities. The City appreciates the fact that recreation planning plays an important role in maintaining the quality of life in a community and therefore tries to be responsive to citizen needs and desires for parks and recreation. Community outreach is one way of obtaining a perspective on the needs and desires of the community and engaging in a process that includes developing realistic alternatives; formulating goals, policies, and recommendations for public and private decisions; developing criteria to measure change; and involving people in the planning, design, and decision processes.

**Community Outreach.** Community outreach on this topic was done through an online survey, a 30-day public review period, and open City Council meetings. The input and opinions received at these meetings helped the administration and facilitator provide the basis for revising the goals and objectives from the previous plan.

**Online Survey.** The Park and Recreation Committee developed a survey to solicit input from its residents regarding current use and future needs of the City's parks & recreation programs, services, maintenance, and facilities. The survey was available for 40 days between September 5th and October 15th using Survey Monkey. The City reached out to stakeholders and community groups who could help spread the word about the survey. This was done through social media, the City website, the city newsletter, posting at City Hall, posting at the YMCA, Library, and other partner organizations. The results were evaluated and can be reviewed in Appendix B along with exhibits of the advertisements for the survey.

The survey received 243 responses; about two-thirds of respondents were City residents. The most used parks were reported to be Tyden Park, Fish Hatchery Park, Riverwalk Trail, and Hammond Hills. The most important facilities were reported to be trails, playgrounds, restrooms, and natural areas. Over 90% of respondents said that recreation programs were either very or somewhat important to them. A desire was expressed for more nature-based programming, art classes, winter sports, adult leagues, and fitness classes. Maintenance, youth programs, park expansion, and safety were among the top items reported that the city should focus on.

**30-day Public Review.** The draft park plan was made available for public review and comment on November 9<sup>th</sup> online and in person at City Hall, 201 E. State Street. We received two (2) comments which included: the addition of the Parks and Recreation Department to the shared organization chart for clarity and the suggestion of reviving the fitness trail at Fish Hatchery Park.

**Public Hearing and Meetings.** A public hearing was held on Monday, January 8, 2024, at 7:00 PM in Council Chambers at City Hall. The purpose of the hearing was to accept written and/or oral comments from the public regarding the City's 2024 – 2028 Master Park and Recreation Plan. There were no comments received at this public hearing.

---

## GOALS AND OBJECTIVES

As a result of the recreation inventory, public input, survey results, and trends, the City of Hastings has developed the following goals and objectives to guide the management and development of recreation opportunities for the next five (5) years. Goals and objectives are meant to guide the intent of the actions to be taken but remain flexible enough to reflect changing attitudes and opportunities. A degree of flexibility is essential for the City to be responsive to its citizens. The goals are long-range in nature and intended to be broad in scope to accommodate future change. The objectives are short-range and intended to direct specific program and development decisions to be made in the next five years. The goals are listed in no particular order.

**Goal 1:** Enhance existing recreation facilities to provide a high quality, accessible, and safe recreational experience at all City parks and facilities.

- Provide access to all users by meeting or exceeding barrier-free standards.
- Update/replace existing playgrounds to meet current safety and ADA guidelines.
- Evaluate security measures such as emergency call boxes, security systems, lighting, and park visibility.
- Work with enforcement agencies and community organizations to provide a safe environment for park users.
- Maintain park facilities by providing adequate staff, equipment, budget, and response systems.
- Incorporate low maintenance products and equipment that save energy, reduce wear, reduce environmental impact, and reduce demands on staff.

**Goal 2:** Preserve, protect, and improve historic, natural, scenic, and environmentally sensitive areas for appropriate public use and enjoyment and habitat protection.

- Develop management / maintenance strategies for natural areas including eradication of invasive species, stabilization of the riverbank, and protect water quality.
- Identify land acquisition opportunities to preserve environmentally sensitive areas including land along the Thornapple River.
- Provide programs and facilities that educate the public about the environment.
- Provide programs and facilities that support the conservation, protection, and preservation of the natural environment.
- Enhance nature trails by adding benches and signage.

**Goal 3:** Expand the diversity of recreation facilities available at new or existing recreation facilities to offer year-round opportunities for individuals of all ages and abilities in order to meet current and future demands.

- Identify new innovative equipment and/or facilities.
- Provide playground equipment for toddlers.
- Consider opportunities for winter sports offerings.
- Provide wide range of active and passive recreation facilities and programs with four season activities for all ages.

---

**Goal 4:** Encourage community partnerships and joint ventures with groups and organizations that have a supportive relationship.

- Continue to support and enhance relationship with the YMCA.
- Identify organizations with similar goals that can be collaborative and share costs for activities and events.
- Collaborate with local agencies, adjacent municipalities, school districts, and other public organizations.
- Explore opportunities to partner with private organizations to encourage philanthropic investment in City park and recreation facilities.
- Facilitate partnerships that support venues for cultural, sports, and recreational activities.

**Goal 5:** Provide non-motorized and wayfinding connections between parks, neighborhoods and community facilities, and municipalities.

- Implement recommendations described in the City's Non-Motorized Trail Master Plan.
- Identify potential opportunities for regional non-motorized trail connections to adjacent communities.
- Provide non-motorized connections to connect users with facilities throughout the community.
- Develop a wayfinding system to assist users locate facilities more easily and locate their proximity within the park system.
- Explore opportunities for easement acquisition for future trail connections.
- Explore opportunities to connect trail systems to local businesses.
- Develop a funding mechanism for long term trail maintenance.

**Goal 6:** Acquire property as it becomes available to ensure recreational opportunities keep pace with the needs of the community.

- Plan for long-range needs to develop existing City owned land, expansion of existing park facilities, and acquire new park property.
- Provide a geographically balanced park system throughout the City.

**Goal 7:** Increase community awareness of available park facilities and programs through communication, promotion, and branding.

- Promote volunteer opportunities and other methods of citizen support for programs and parks.
- Encourage public engagement in park facility development and programs through community outreach projects, stewardship programs, and interpretive programs.
- Continue to publicize park events, facilities and programs through social media, newsletters, press releases, web site, promotional events, and other media outlets.
- Increase resident awareness of the City's park goals, events, and accomplishments to get the community involved in programs and increase use of park facilities.

**Goal 8:** Promote healthy and active lifestyles through park and recreation facilities programs.

- Promote awareness of fitness programs that support healthy lifestyles.
- Provide four season recreation opportunities.
- Provide recreation facilities that encourage healthy habits.
- Target programs for specific age groups based on current trends.



---

**Goal 9:** Explore sustainable funding opportunities for future park development and maintenance.

- Explore partnerships with local corporations.
- Develop a fundraising arm or friends' group for trail maintenance.
- Continue to seek funding opportunities from grants, foundations, millages, and donations.

**Goal 10:** Identify opportunities for place making and public space development.

- Integrate technology into parks and public spaces.
- Provide space for public art display.
- Use public space to promote the branding and identity of the park system.

---

## ACTION PLAN

The Action Plan Table of the Hastings Parks and Recreation Master Plan demonstrates the proposed course of development or improvement that will be taken over the next five years. The Goals and Objectives, from the previous section, serve as guidelines for the development of the Action Program. The Action Plan Table which follows will focus on the needs identified in the Action Program and will project potential expenditures for the five-year action period on a park by park and project by project basis. The five-year period will begin in 2024 and extend through 2028. This time period will not be sufficient to accomplish all of the goals and objectives, but begins to prioritize those projects that may be achievable within the initial five years.

The Action Plan focuses on reduction of deficiencies, and expansion and improvements of facilities in a manner that not only meets current needs, but also diversifies the type and quality of recreational opportunities within the City. These needs were identified during the public input process and were identified during the review and comparison of park standards and demographic/population trends. The Action Plan describes specific priorities to be taken to address these needs and prioritizes projects in each park. Potential funding sources other than general city funds are also described.

### Future Park Development

Figure 5 on the following page shows action items for improving existing parks. Two new parks are being proposed which would increase public access to natural areas as indicated was desired in the public survey.

**Development of 19.58 acres of Vacant Land on State near Aldi/Viking.** This site has been identified as a good location for a trail head for the Riverwalk trail. Other suggestions for this area include an additional disc golf course, hiking trails, nature education and preservation, and riverfront access. The approximate cost is \$150,000. With this development it opens the possibility to eventually connect Hammond Hills (Carter Lake) to Sweezy's Pond with foot trails. A foot bridge over the Thornapple River at this property along with a public walkway on the other side of the bridge would tie the city's northernmost park with its southernmost park with minimal amount of travel along busy roads or highways. The straight line is about two (2) miles.

**Development of trail to connect Fish Hatchery Park and Sweezy's Nature Area.** This would include constructing a trail on Vacant McNair Street ROW between Green Street and the dead end of Clinton Street. The approximate cost is \$100,000. This trail would also allow visitors and employees of Pennock Hospital, and residents in the fourth ward to explore a new part of the city that abuts a wide-open property that is undeveloped and will be preserved for the future. The advantages would be access to peaceful, open spaces, for physical exercise and contemplation. It would also allow more visitors to Sweezy's Nature Area and create a loop for Ironside Drive Neighborhood and Cooke Addition Subdivision.

*Figure 12: Park Action Plan*

Park	Improvement	Priority	Est. Cost	Funding Options*
<b>Bliss Riverfront Park</b>	Nature Trail Upgrades	1	\$12,000	MDNR RPG**
	Boat Launch & bank Stabilization	2	\$18,000	MDNR RPG
	Restroom Facilities (w/fire station)	3	\$45,000	include in future bond
	Food Forest visibility & promotion	3	\$1,000	
	Overlook Improvements	3	\$25,000	MDNR RPG
<b>Bob King Park</b>	Tangle Town Reconstruction	1	\$650,000	Patronicity Grant, Donations
	Pickleball	2	\$15,000	Barry Co. Park Grant
	Lighting	2	\$25,000	
	Parking Lot Improvements	3	\$230,000	
	Softball field Upgrades	3	\$20,000	Barry Co. Park Grant
<b>First Ward Park</b>	Skate Park Improvements	1	\$100,000	MDNR TFG**
	Updated Playground Equipment	1	\$140,000	MDNR TFG
	Lighting	2	\$15,000	
	Sidewalk Replacement	3	\$25,000	
	Additional volleyball court	3	\$20,000	MDNR RPG
	Improved seating & Amenities	3	\$30,000	
<b>Fish Hatchery Park</b>	Primary Restroom Replacement	1	\$500,000	MDNR TFG
	Softball Field Improvements	2	\$95,000	MDNR TFG, MDNR RPG
	Softball Area Restroom Replacement	2	\$250,000	MDNR TFG, MDNR RPG
	Trail Repaving	1	\$50,000	MDNR RPG
	Hatchery Building Upgrades	3	\$20,000	Donations
	Fitness Trail Refresh	3	\$35,000	
	Stairs, bridge refurbishing (Cook Rd)	3	\$45,000	
	Pond Dredging	3	\$80,000	
<b>Hammond Hills Park</b>	Signage/Info Kiosk	1	\$8,000	
	Expand Disc Golf Course	1	\$20,000	Volunteer labor, Donations
	Pit style Toilets	2	\$80,000	MDNR RPG
	Increase Parking Capacity	2	\$400,000	
	Construct Pavilion	3	\$80,000	Donations
<b>Riverwalk/Pocket Park</b>	Improved signage	1	\$50,000	
	Extend trail - Industrial to Heath	2	\$250,000	
	Trailhead	2	\$30,000	MDNR RPG, Blue Zones
<b>Second Ward Park</b>	Fix grade in center of park	1	\$10,000	
	Basketball court improvements	2	\$20,000	MDNR RPG
	Upgrade play equipment	2	\$80,000	MDNR RPG
	Add drinking fountain	3	\$15,000	
<b>Sweezy's Nature Area</b>	Marketing/awareness of the area	1	\$1,000	
	Add benches to trail	2	\$12,000	Barry Co. Park Grant, Donations
	Interpretive signage	2	\$8,000	Barry Co. Park Grant, Donations
	Learning pavilion	3	\$20,000	Barry Co. Park Grant, Donations
	Dam Repair/mitigation of damage	3	\$100,000	
<b>Tyden Nature Area</b>	Trail maintenance	1	\$20,000	
	Improve accessibility	2	\$80,000	MDNR TFG
	Wayfinding signage	2	\$15,000	
<b>Tyden Park</b>	Resurface tennis courts	1	\$30,000	MDNR RPG
	Add pickleball	1	\$30,000	MDNR RPG
	Resurface/increase parking lot & drives	1	\$150,000	
	Pavilion upgrades	2	\$20,000	
	Ice skating	3	\$1,000,000	MDNR TFG
	Volleyball court improvements	3	\$20,000	Barry Co. Park Grant, Donations
	Boat launch improvements	3	\$25,000	
Restroom upgrades/refresh	3	\$20,000		

\*Options Other than General Fund \*\*MDNR RPG: MDNR Recreation Passport Grant, MDNR TFG: MDNR Trust Fund Grant

---

## Potential Funding Sources/Partners

A variety of funding sources and resource partners may exist to assist with the implementation of proposed recreation projects. A summary of the primary sources is listed below:

**Michigan Natural Resources Trust Fund.** The MNRTF can provide assistance for the City’s outdoor recreation projects, including land acquisition and physical development of park facilities. This assistance is intended to bolster existing facilities, protect critical natural resources and establish new parkland. Development project grants may range between \$15,000 and \$300,000; there is no limit to acquisition requests. The minimum required local match is 25%.

**Michigan Natural Resources Passport Grant.** The Passport grant fund program is primarily focused on renovating and improving existing parks, however the development of new parks is considered eligible. The Minimum grant request is \$7,500 and the maximum grant request is \$150,000. The minimum required local match is 25%.

**Land and Water Conservation Fund (LWCF).** The LWCF is similar to the Trust Fund grant described above, in that it is meant to help fund land acquisition and park development. The minimum grant request amount is \$30,000 and the maximum grant request amount is \$300,000. The minimum required local match is 50%. Natural feature preservation has historically been the primary award criteria; and as such, this opportunity should especially be taken into account when planning for new passive recreation facilities. In addition, the LWCF now places emphasis on trails, “green” technology in outdoor recreation, universal design and coordination among recreation providers.

**MDOT Transportation Alternatives Program (TAP).** The TAP fund is a grant program that funds non-motorized paths and streetscapes that enhance the community’s intermodal transportation system and provide safe alternative transportation options. The program uses federal funds to promote walkability, alternative transportation options, and place based economic development to improve the quality of life for communities. The minimum required local match is 20%.

**City Funds.** The general fund, a special millage, the parks budget, bonds, and the parks capital improvement account are possibilities to help fund new and improved facilities in the Township.

**Donations & Foundations.** Residents, property owners, businesses, and organizations will frequently contribute to causes that improve local quality of life. While these contributions are often pecuniary, they may also include land donations, volunteer services, or the gift of equipment or other facilities.

**Michigan Natural Resources Urban Community Forestry Program.** This program provides funding for tree planting, care, management plans, inventories, and maintenance activities. Applications are due in October with grant requests ranging from \$10,000 to \$50,000.

**Wetland Program Development.** The goals of the Environmental Protection Agency’s wetland program and the Clean Water Action Plan are to increase the quantity and quality of wetlands in the U.S. by conservation and increasing wetland acreage and improving wetland health. State, tribal, and local governmental agencies, interstate, intertribal, and local government associations are eligible to receive grant funds. Applications require a 25% minimum local match. For more information, visit their website at: [www.epa.gov/owow/wetlands/grant\\_guidelines](http://www.epa.gov/owow/wetlands/grant_guidelines).



# APPENDIX A. POST COMPLETION SELF-CERTIFICATION REPORTS



Michigan Department of Natural Resources - Grants Management

## PUBLIC OUTDOOR RECREATION GRANT POST-COMPLETION SELF-CERTIFICATION REPORT

*This information required under authority of Part 19, PA 451 of 1994, as amended;  
the Land and Water Conservation Fund Act of 1965, 78 Stat. 897 (1964); and Part 715, of PA 451 of 1994, as amended.*

**GRANT TYPE:**  MICHIGAN NATURAL RESOURCES TRUST FUND     CLEAN MICHIGAN INITIATIVE  
(Please select one)  LAND AND WATER CONSERVATION FUND     RECREATION PASSPORT     BOND FUND

**GRANTEE:** City of Hastings

**PROJECT NUMBER:** 26-00837

**PROJECT TYPE:** Development

**PROJECT TITLE:** Fish Hatchery Park

**PROJECT SCOPE:** Lighted ball field, fence, bleachers, sign, players bench

### TO BE COMPLETED BY LOCAL GOVERNMENT AGENCY (GRANTEE)

Name of Agency (Grantee) <b>City of Hastings</b>	Contact Person Sarah Moyer-Cale	Title <b>City Manager</b>
Address <b>201 E. State St</b>	Telephone <b>269-945-2468</b>	
City, State, ZIP <b>Hastings, MI 49058</b>	Email <b>smoyer-cale@hastingsmi.gov</b>	

### SITE DEVELOPMENT

Any change(s) in the facility type, site layout, or recreation activities provided?  
If yes, please describe change(s).  Yes  No

---

Has any portion of the project site been converted to a use other than outdoor recreation? If yes, please describe what portion and describe use. (This would include cell towers and any non-recreation buildings.)  Yes  No

---

Are any of the facilities obsolete? If yes, please explain.  Yes  No

---

### SITE QUALITY

Is there a park entry sign which identifies the property or facility as a public recreation area?  
If yes, please provide a photograph of the sign. If no, please explain.  Yes  No

---

Are the facilities and the site being properly maintained? If no, please explain.  Yes  No

---

Is vandalism a problem at this site? If yes, explain the measures being taken to prevent or minimize vandalism.  Yes  No

---

**POST COMPLETION SELF-CERTIFICATION REPORT - CONT'D**

Is maintenance scheduled on a regular basis? If yes, give schedule. If no, please explain.  Yes  No  
weekly mowing and field maintenance, cleaning of restrooms and trash removal.

**GENERAL**

Is a Program Recognition plaque permanently displayed at the site? If yes, please provide a photograph. (Not required for Bond Fund Grants)  Yes  No  N/A

Is any segment of the general public restricted from using the site or facilities? (i.e. resident only, league only, boaters only, etc.) If yes, please explain.  Yes  No

Is a fee charged for use of the site or facilities? If yes, please provide fee structure.  Yes  No

What are the hours and seasons for availability of the site?  
open dawn til dusk, year round

**COMMENTS (ATTACH SEPARATE SHEET IF MORE SPACE IS NEEDED)**



**POST COMPLETION SELF-CERTIFICATION REPORT - CONT'D**

**CERTIFICATION**

*I do hereby certify that I am duly elected, appointed and/or authorized by the Grantee named above and that the information and answers provided herein are true and accurate to the best of my personal knowledge, information and belief.*

**Sarah Moyer-Cale**

Please print

  
Grantee Authorized Signature

1-17-24  
Date

**Christopher Bever**

Please print

  
Witness Signature

1-17-24  
Date

**Please be sure to upload the completed Post Completion Report and plaque photographs to the 5-Year Recreation Plan in MiGrants.**





Michigan Department of Natural Resources - Grants Management

**PUBLIC OUTDOOR RECREATION GRANT  
POST-COMPLETION SELF-CERTIFICATION REPORT**

*This information required under authority of Part 19, PA 451 of 1994, as amended;  
the Land and Water Conservation Fund Act of 1965, 78 Stat. 897 (1964); and Part 715, of PA 451 of 1994, as amended.*

**GRANT TYPE:**  MICHIGAN NATURAL RESOURCES TRUST FUND  CLEAN MICHIGAN INITIATIVE  
(Please select one)  LAND AND WATER CONSERVATION FUND  RECREATION PASSPORT  BOND FUND

**GRANTEE:** City of Hastings

**PROJECT NUMBER:** 26-01424

**PROJECT TYPE:** Development

**PROJECT TITLE:** Fish Hatchery Park

**PROJECT SCOPE:** drives & parking, 2 tennis courts, soccer field, play area, basketball court, horse show pits, picnic shelters, restroom,

**TO BE COMPLETED BY LOCAL GOVERNMENT AGENCY (GRANTEE)**

Name of Agency (Grantee) <b>City of Hastings</b>	Contact Person Sarah Moyer-Cale	Title <b>City Manager</b>
Address <b>201 E. State St</b>	Telephone <b>269-945-2468</b>	
City, State, ZIP <b>Hastings, MI 49058</b>	Email <b>smoyer-cale@hastingsmi.gov</b>	

**SITE DEVELOPMENT**

Any change(s) in the facility type, site layout, or recreation activities provided?  
If yes, please describe change(s).  Yes  No  
removal of horseshoe pits and tennis courts due to deterioration. Addition of disc golf.

Has any portion of the project site been converted to a use other than outdoor recreation? If yes, please describe what portion and describe use. (This would include cell towers and any non-recreation buildings.)  Yes  No

Are any of the facilities obsolete? If yes, please explain.  Yes  No

**SITE QUALITY**

Is there a park entry sign which identifies the property or facility as a public recreation area?  
If yes, please provide a photograph of the sign. If no, please explain.  Yes  No

Are the facilities and the site being properly maintained? If no, please explain.  Yes  No

Is vandalism a problem at this site? If yes, explain the measures being taken to prevent or minimize vandalism.  Yes  No



**POST COMPLETION SELF-CERTIFICATION REPORT - CONT'D**

Is maintenance scheduled on a regular basis? If yes, give schedule. If no, please explain.  Yes  No

**GENERAL**

Is a Program Recognition plaque permanently displayed at the site? If yes, please provide a photograph. (Not required for Bond Fund Grants)  Yes  No  N/A

Is any segment of the general public restricted from using the site or facilities? (i.e. resident only, league only, boaters only, etc.) If yes, please explain.  Yes  No

Is a fee charged for use of the site or facilities? If yes, please provide fee structure.  Yes  No

Fish Hatchery Bldg rental \$150/hr residents, \$200/hr non residents

Park Pavillion rental \$45 for residents, \$70 non residents

What are the hours and seasons for availability of the site?

Year round - dawn to dusk

**COMMENTS (ATTACH SEPARATE SHEET IF MORE SPACE IS NEEDED)**



**POST COMPLETION SELF-CERTIFICATION REPORT - CONT'D**

**CERTIFICATION**

*I do hereby certify that I am duly elected, appointed and/or authorized by the Grantee named above and that the information and answers provided herein are true and accurate to the best of my personal knowledge, information and belief.*

**Sarah Moyer-Cale**

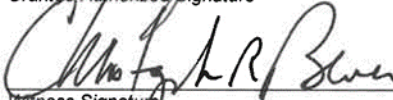
Please print

  
Grantee Authorized Signature

1-17-24  
Date

**Christopher Bever**

Please print

  
Witness Signature

1-17-24  
Date

**Please be sure to upload the completed Post Completion Report and plaque photographs to the 5-Year Recreation Plan in MiGrants.**



Michigan Department of Natural Resources - Grants Management

**PUBLIC OUTDOOR RECREATION GRANT  
POST-COMPLETION SELF-CERTIFICATION REPORT**

*This information required under authority of Part 19, PA 451 of 1994, as amended;  
the Land and Water Conservation Fund Act of 1965, 78 Stat. 897 (1964); and Part 715, of PA 451 of 1994, as amended.*

**GRANT TYPE:**  MICHIGAN NATURAL RESOURCES TRUST FUND     CLEAN MICHIGAN INITIATIVE  
(Please select one)  LAND AND WATER CONSERVATION FUND     RECREATION PASSPORT     BOND FUND

**GRANTEE:** City of Hastings

**PROJECT NUMBER:** TF09-111

**PROJECT TYPE:** Development

**PROJECT TITLE:** Hastings Riverwalk Development

**PROJECT SCOPE:** trestle bridge update, pocket park, river overlooks, landscape, non motorized trail

**TO BE COMPLETED BY LOCAL GOVERNMENT AGENCY (GRANTEE)**

Name of Agency (Grantee) <b>City of Hastings</b>	Contact Person Sarah Moyer-Cale	Title <b>City Manager</b>
Address <b>201 E. State St</b>	Telephone <b>269-945-2468</b>	
City, State, ZIP <b>Hastings, MI 49058</b>	Email <b>smoyer-cale@hastingsmi.gov</b>	

**SITE DEVELOPMENT**

Any change(s) in the facility type, site layout, or recreation activities provided?  
If yes, please describe change(s).  Yes  No

Has any portion of the project site been converted to a use other than outdoor recreation? If yes, please describe what portion and describe use. (This would include cell towers and any non-recreation buildings.)  Yes  No

Are any of the facilities obsolete? If yes, please explain.  Yes  No

**SITE QUALITY**

Is there a park entry sign which identifies the property or facility as a public recreation area?  
If yes, please provide a photograph of the sign. If no, please explain.  Yes  No  
Access to this trail can be from Tyden Park - sign provided.

Are the facilities and the site being properly maintained? If no, please explain.  Yes  No

Is vandalism a problem at this site? If yes, explain the measures being taken to prevent or minimize vandalism.  Yes  No



**POST COMPLETION SELF-CERTIFICATION REPORT - CONT'D**

Is maintenance scheduled on a regular basis? If yes, give schedule. If no, please explain.  Yes  No  
Periodic clean up/garbage removal, mowing, landscape upkeep.

**GENERAL**

Is a Program Recognition plaque permanently displayed at the site? If yes, please provide a photograph. (Not required for Bond Fund Grants)  Yes  No  N/A

Is any segment of the general public restricted from using the site or facilities? (i.e. resident only, league only, boaters only, etc.) If yes, please explain.  Yes  No

Is a fee charged for use of the site or facilities? If yes, please provide fee structure.  Yes  No

What are the hours and seasons for availability of the site?  
dawn to dusk, open year round

**COMMENTS (ATTACH SEPARATE SHEET IF MORE SPACE IS NEEDED)**





**POST COMPLETION SELF-CERTIFICATION REPORT - CONT'D**

**CERTIFICATION**

*I do hereby certify that I am duly elected, appointed and/or authorized by the Grantee named above and that the information and answers provided herein are true and accurate to the best of my personal knowledge, information and belief.*

**Sarah Moyer-Cale**

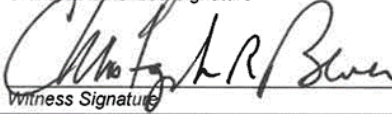
Please print

  
Grantee Authorized Signature

1-17-24  
Date

**Christopher Bever**

Please print

  
Witness Signature

1-17-24  
Date

**Please be sure to upload the completed Post Completion Report and plaque photographs to the 5-Year Recreation Plan in MiGrants.**



Michigan Department of Natural Resources - Grants Management

PUBLIC OUTDOOR RECREATION GRANT
POST-COMPLETION SELF-CERTIFICATION REPORT

This information required under authority of Part 19, PA 451 of 1994, as amended;
the Land and Water Conservation Fund Act of 1965, 78 Stat. 897 (1964); and Part 715, of PA 451 of 1994, as amended.

GRANT TYPE: [X] MICHIGAN NATURAL RESOURCES TRUST FUND [ ] CLEAN MICHIGAN INITIATIVE
(Please select one) [ ] LAND AND WATER CONSERVATION FUND [ ] RECREATION PASSPORT [ ] BOND FUND

GRANTEE: City of Hastings

PROJECT NUMBER: TF11-080

PROJECT TYPE: Development

PROJECT TITLE: Tyden Park Riverwalk Trail Extension

PROJECT SCOPE: Bituminous trail, limestone path, site amenities, streambank restoration, trees. river overlook

TO BE COMPLETED BY LOCAL GOVERNMENT AGENCY (GRANTEE)

Table with 2 columns: Agency Information, Contact Information. Rows include Name of Agency (City of Hastings), Contact Person (Sarah Moyer-Cale), Title (City Manager), Address (201 E. State St), Telephone (269-945-2468), City, State, ZIP (Hastings, MI 49058), and Email (smoyer-cale@hastingsmi.gov).

SITE DEVELOPMENT

Any change(s) in the facility type, site layout, or recreation activities provided? If yes, please describe change(s). [ ] Yes [X] No

Has any portion of the project site been converted to a use other than outdoor recreation? If yes, please describe what portion and describe use. (This would include cell towers and any non-recreation buildings.) [ ] Yes [X] No

Are any of the facilities obsolete? If yes, please explain. [ ] Yes [X] No

SITE QUALITY

Is there a park entry sign which identifies the property or facility as a public recreation area? If yes, please provide a photograph of the sign. If no, please explain. [X] Yes [ ] No

Are the facilities and the site being properly maintained? If no, please explain. [X] Yes [ ] No

Is vandalism a problem at this site? If yes, explain the measures being taken to prevent or minimize vandalism. [ ] Yes [X] No

**POST COMPLETION SELF-CERTIFICATION REPORT - CONT'D**

Is maintenance scheduled on a regular basis? If yes, give schedule. If no, please explain.  Yes  No  
periodic garbage collection/clean up, mowing, landscape maintenance

**GENERAL**

Is a Program Recognition plaque permanently displayed at the site? If yes, please provide a photograph. (Not required for Bond Fund Grants)  Yes  No  N/A

Is any segment of the general public restricted from using the site or facilities? (i.e. resident only, league only, boaters only, etc.) If yes, please explain.  Yes  No

Is a fee charged for use of the site or facilities? If yes, please provide fee structure.  Yes  No

What are the hours and seasons for availability of the site?  
dawn to dusk, year round

**COMMENTS (ATTACH SEPARATE SHEET IF MORE SPACE IS NEEDED)**





**POST COMPLETION SELF-CERTIFICATION REPORT - CONT'D**

**CERTIFICATION**

*I do hereby certify that I am duly elected, appointed and/or authorized by the Grantee named above and that the information and answers provided herein are true and accurate to the best of my personal knowledge, information and belief.*

**Sarah Moyer-Cale**


Please print

  
Grantee Authorized Signature

1-17-24  
Date

**Christopher Bever**

Please print

  
Witness Signature

1-17-24  
Date

**Please be sure to upload the completed Post Completion Report and plaque photographs to the 5-Year Recreation Plan in MiGrants.**





Michigan Department of Natural Resources - Grants Management

**PUBLIC OUTDOOR RECREATION GRANT  
POST-COMPLETION SELF-CERTIFICATION REPORT**

*This information required under authority of Part 19, PA 451 of 1994, as amended;  
the Land and Water Conservation Fund Act of 1965, 78 Stat. 897 (1964); and Part 715, of PA 451 of 1994, as amended.*

**GRANT TYPE:**  MICHIGAN NATURAL RESOURCES TRUST FUND  CLEAN MICHIGAN INITIATIVE  
(Please select one)  LAND AND WATER CONSERVATION FUND  RECREATION PASSPORT  BOND FUND

**GRANTEE:** City of Hastings

**PROJECT NUMBER:** TF99-283

**PROJECT TYPE:** Development

**PROJECT TITLE:** Hastings Riverwalk Development

**PROJECT SCOPE:** Bituminous trail, limestone path, pedestrian bridge, restroom bldg, site furniture, overlook docks

**To Be Completed By Local Government Agency (Grantee)**

Name of Agency (Grantee) <b>City of Hastings</b>	Contact Person Sarah Moyer-Cale	Title <b>City Manager</b>
Address <b>201 E. State St</b>	Telephone <b>269-945-2468</b>	
City, State, ZIP <b>Hastings, MI 49058</b>	Email <b>smoyer-cale@hastingsmi.gov</b>	

**SITE DEVELOPMENT**

Any change(s) in the facility type, site layout, or recreation activities provided?  
If yes, please describe change(s).  Yes  No

Has any portion of the project site been converted to a use other than outdoor recreation? If yes, please describe what portion and describe use. (This would include cell towers and any non-recreation buildings.)  Yes  No

Are any of the facilities obsolete? If yes, please explain.  Yes  No

**SITE QUALITY**

Is there a park entry sign which identifies the property or facility as a public recreation area?  
If yes, please provide a photograph of the sign. If no, please explain.  Yes  No  
Access to this trail can be from Tyden Park - sign provided.

Are the facilities and the site being properly maintained? If no, please explain.  Yes  No

Is vandalism a problem at this site? If yes, explain the measures being taken to prevent or minimize vandalism.  Yes  No

**POST COMPLETION SELF-CERTIFICATION REPORT - CONT'D**

Is maintenance scheduled on a regular basis? If yes, give schedule. If no, please explain.  Yes  No  
 Periodic clean up/garbage removal, mowing, landscape upkeep.

**GENERAL**

Is a Program Recognition plaque permanently displayed at the site? If yes, please provide a photograph. (Not required for Bond Fund Grants)  Yes  No  N/A

Is any segment of the general public restricted from using the site or facilities? (i.e. resident only, league only, boaters only, etc.) If yes, please explain.  Yes  No

Is a fee charged for use of the site or facilities? If yes, please provide fee structure.  Yes  No

What are the hours and seasons for availability of the site?  
 No hours, open year round

**COMMENTS (ATTACH SEPARATE SHEET IF MORE SPACE IS NEEDED)**



Access to the trail can be found through Tyden Park.



**POST COMPLETION SELF-CERTIFICATION REPORT - CONT'D**

**CERTIFICATION**

*I do hereby certify that I am duly elected, appointed and/or authorized by the Grantee named above and that the information and answers provided herein are true and accurate to the best of my personal knowledge, information and belief.*

**Sarah Moyer-Cale**

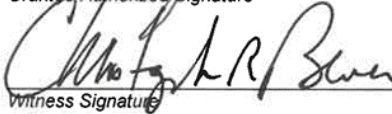
Please print

  
Grantee Authorized Signature

1-17-24  
Date

**Christopher Bever**

Please print

  
Witness Signature

1-17-24  
Date

**Please be sure to upload the completed Post Completion Report and plaque photographs to the 5-Year Recreation Plan in MiGrants.**





Michigan Department of Natural Resources - Grants Management

PUBLIC OUTDOOR RECREATION GRANT
POST-COMPLETION SELF-CERTIFICATION REPORT

This information required under authority of Part 19, PA 451 of 1994, as amended;
the Land and Water Conservation Fund Act of 1965, 78 Stat. 897 (1964); and Part 715, of PA 451 of 1994, as amended.

GRANT TYPE: [ ] MICHIGAN NATURAL RESOURCES TRUST FUND [ ] CLEAN MICHIGAN INITIATIVE
(Please select one) [ ] LAND AND WATER CONSERVATION FUND [ ] RECREATION PASSPORT [x] BOND FUND

GRANTEE: City of Hastings

PROJECT NUMBER: BF92-298

PROJECT TYPE: Development

PROJECT TITLE: Tyden Park Renovations

PROJECT SCOPE: Reconstruct basketball/tennis courts, new shelter, sand volleyball

TO BE COMPLETED BY LOCAL GOVERNMENT AGENCY (GRANTEE)

Table with 2 columns: Agency Information and Contact Information. Includes fields for Name of Agency (City of Hastings), Contact Person (Sarah Moyer-Cale), Title (City Manager), Address (201 E. State St), Telephone (269-945-2468), City, State, ZIP (Hastings, MI 49058), and Email (smoyer-cale@hastingsmi.gov).

SITE DEVELOPMENT

Any change(s) in the facility type, site layout, or recreation activities provided? If yes, please describe change(s). [x] Yes [ ] No
trails, restroom, overlook decks, have been added since the grant.

Has any portion of the project site been converted to a use other than outdoor recreation? If yes, please describe what portion and describe use. (This would include cell towers and any non-recreation buildings.) [ ] Yes [x] No

Are any of the facilities obsolete? If yes, please explain. [x] Yes [ ] No
Tennis courts have large cracks

SITE QUALITY

Is there a park entry sign which identifies the property or facility as a public recreation area? If yes, please provide a photograph of the sign. If no, please explain. [x] Yes [ ] No

Are the facilities and the site being properly maintained? If no, please explain. [x] Yes [ ] No

Is vandalism a problem at this site? If yes, explain the measures being taken to prevent or minimize vandalism. [ ] Yes [x] No



**POST COMPLETION SELF-CERTIFICATION REPORT - CONT'D**

Is maintenance scheduled on a regular basis? If yes, give schedule. If no, please explain.  Yes  No  
Periodic clean up/trash removal, mowing and landscaping upkeep.

**GENERAL**

Is a Program Recognition plaque permanently displayed at the site? If yes, please provide a photograph. (Not required for Bond Fund Grants)  Yes  No  N/A

Is any segment of the general public restricted from using the site or facilities? (i.e. resident only, league only, boaters only, etc.) If yes, please explain.  Yes  No

Is a fee charged for use of the site or facilities? If yes, please provide fee structure.  Yes  No  
Pavillion rental fee \$45 for residents, \$70 for non residents. This is to contribute toward tax funded maintenance/use.

What are the hours and seasons for availability of the site?  
Dawn - Dusk year round

**COMMENTS (ATTACH SEPARATE SHEET IF MORE SPACE IS NEEDED)**



**POST COMPLETION SELF-CERTIFICATION REPORT - CONT'D**

**CERTIFICATION**

*I do hereby certify that I am duly elected, appointed and/or authorized by the Grantee named above and that the information and answers provided herein are true and accurate to the best of my personal knowledge, information and belief.*

**Sarah Moyer-Cale**


Please print

  
Grantee Authorized Signature

1-17-24  
Date

**Christopher Bever**

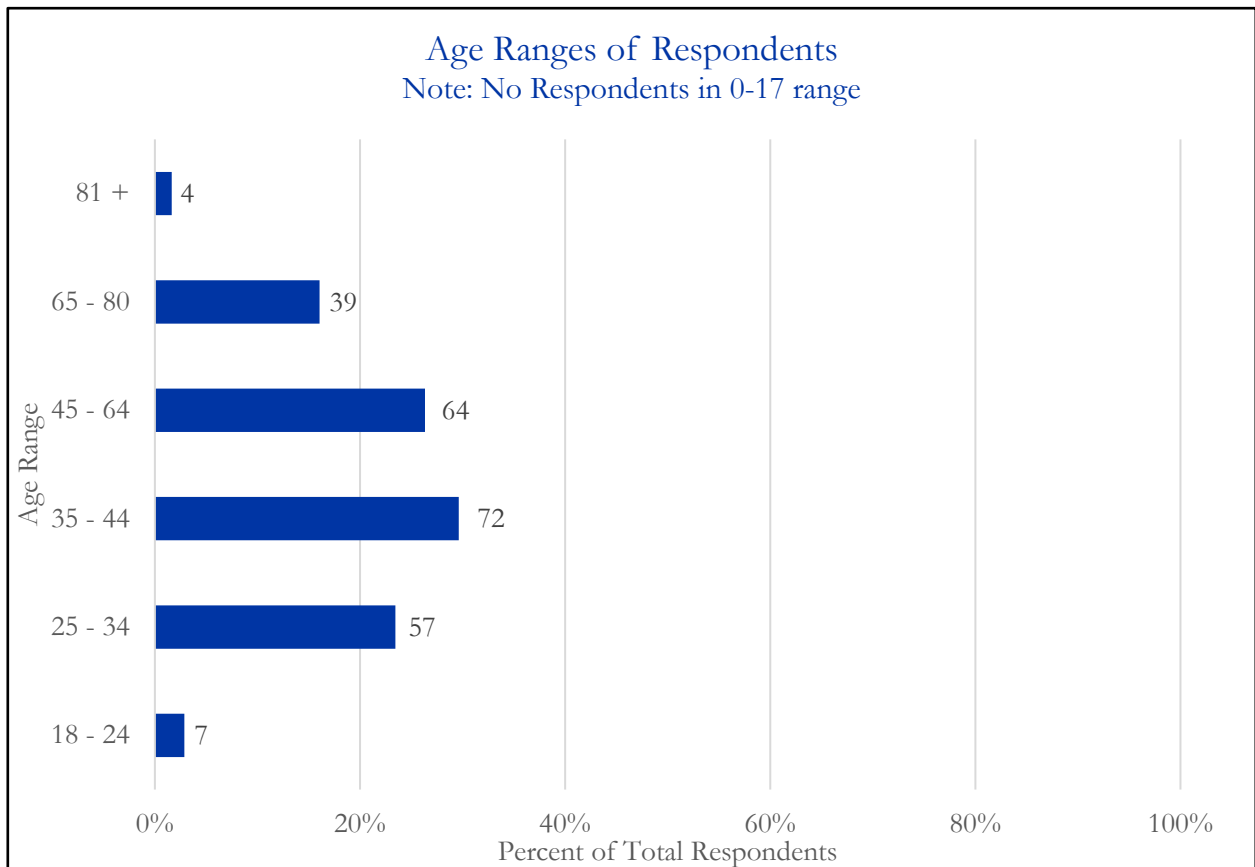
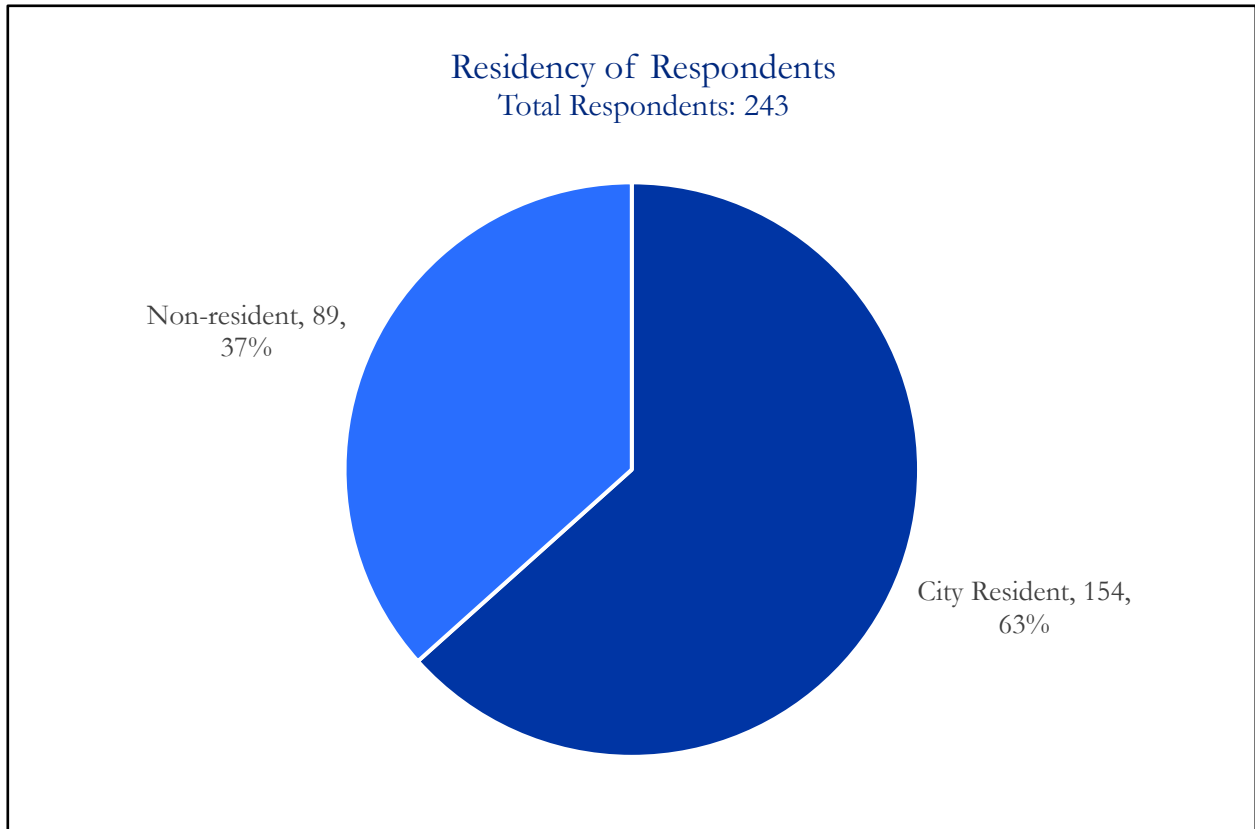
Please print

  
Witness Signature

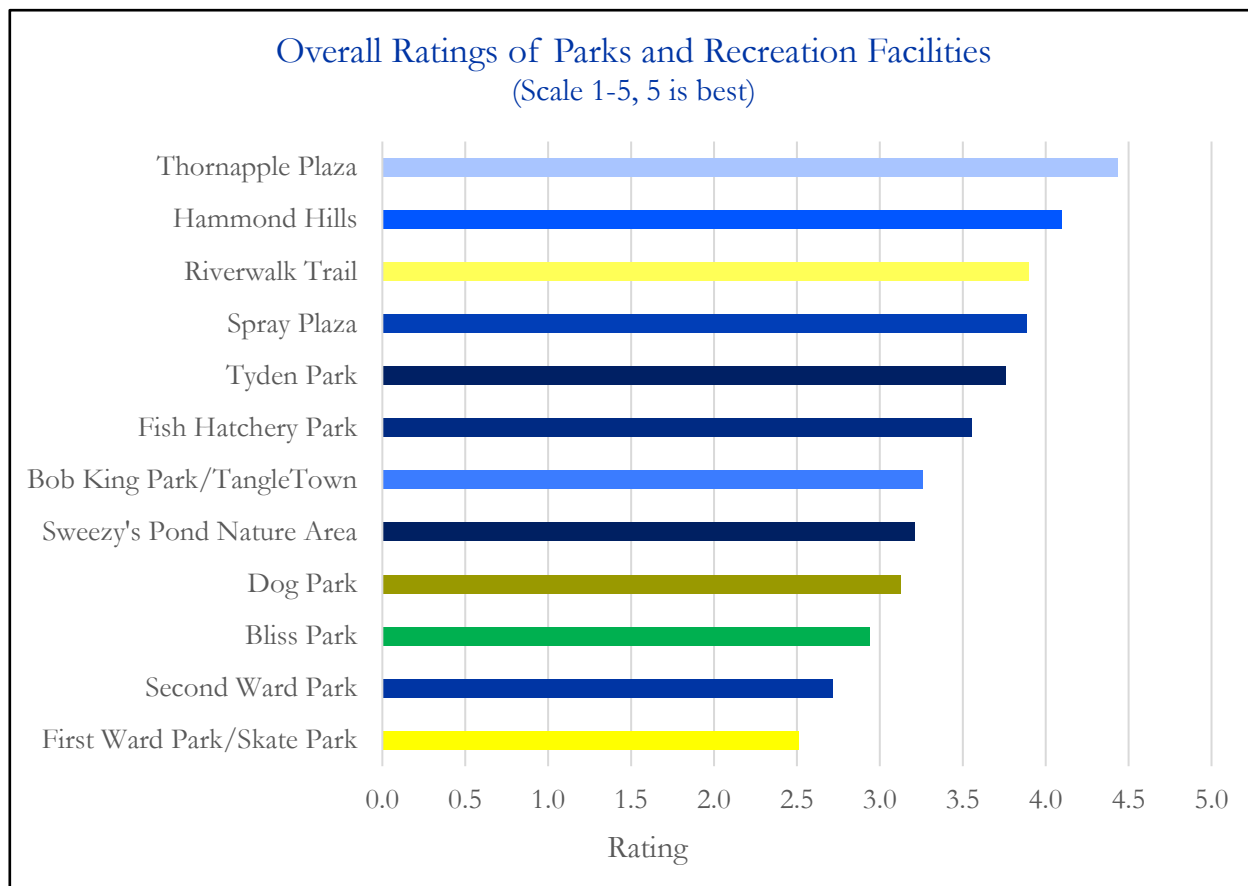
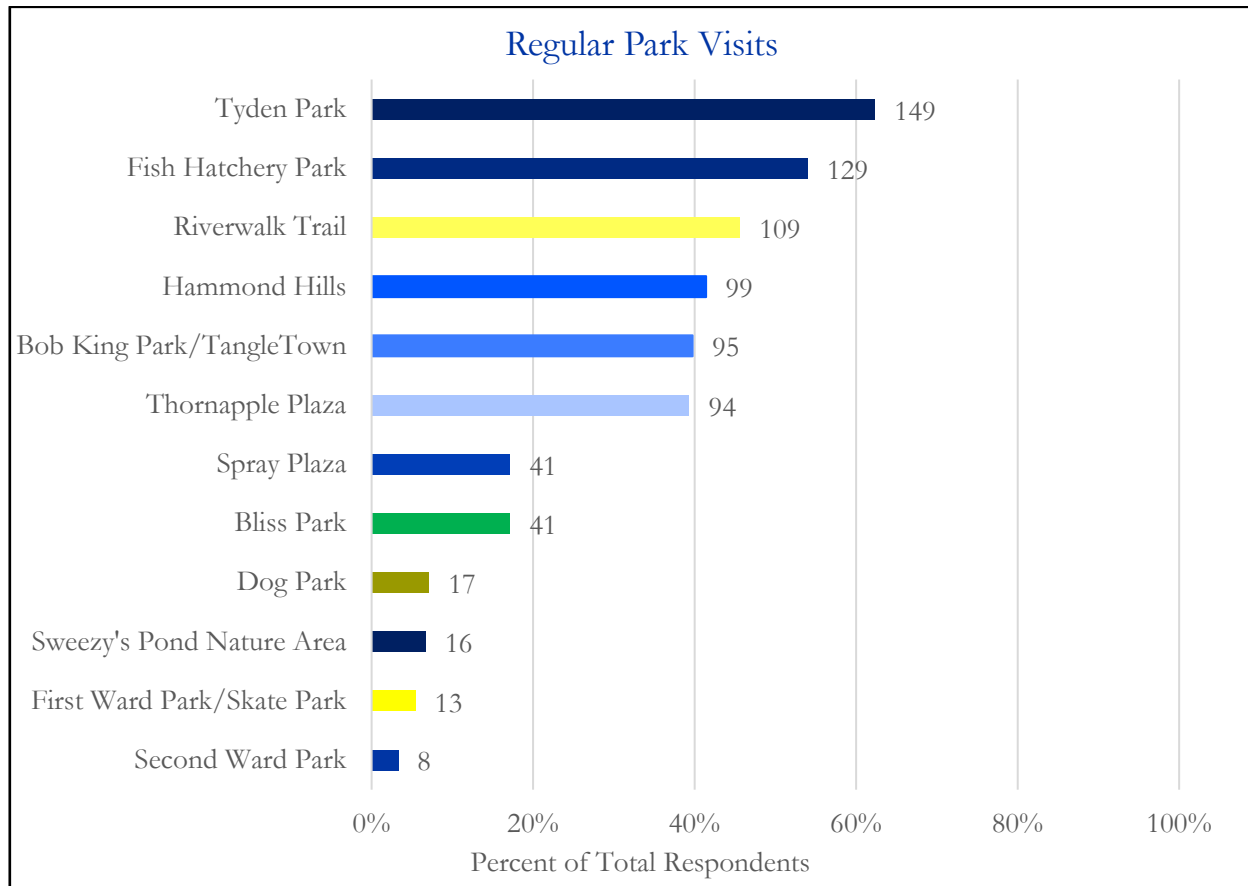
1-17-24  
Date

**Please be sure to upload the completed Post Completion Report and plaque photographs to the 5-Year Recreation Plan in MiGrants.**

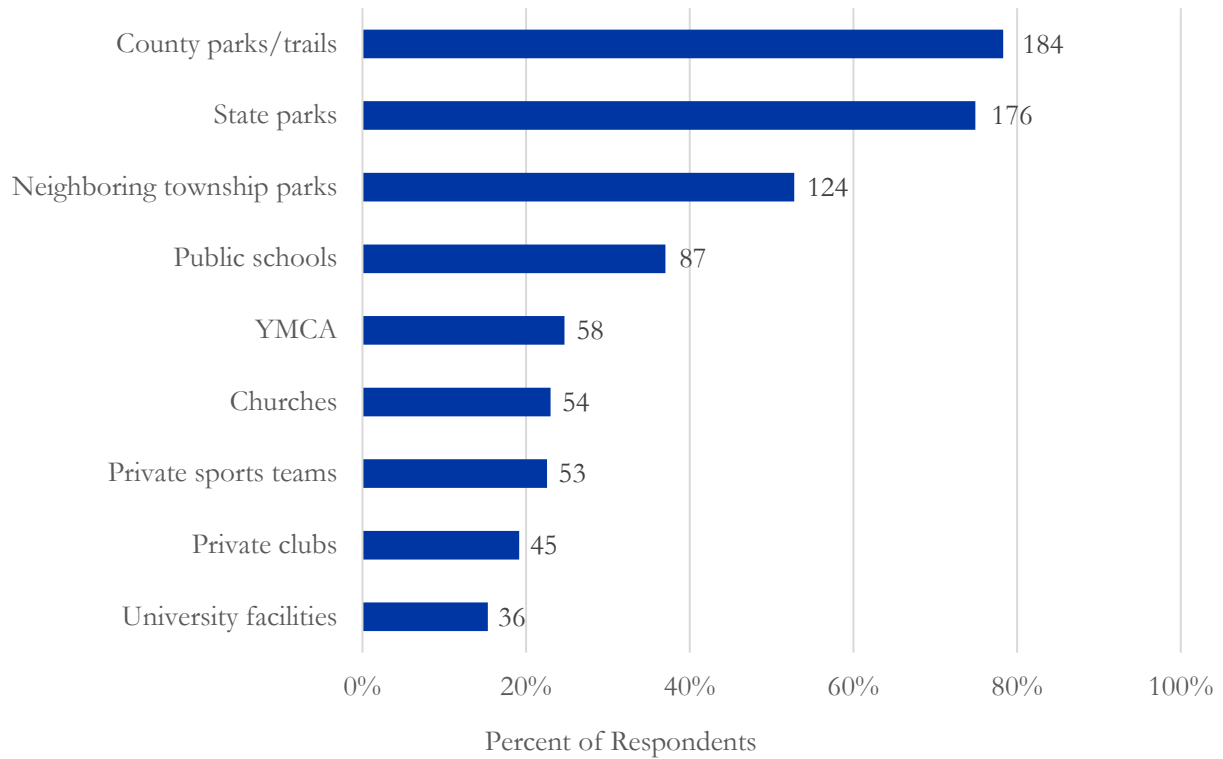
## APPENDIX B. COMMUNITY SURVEY RESULTS



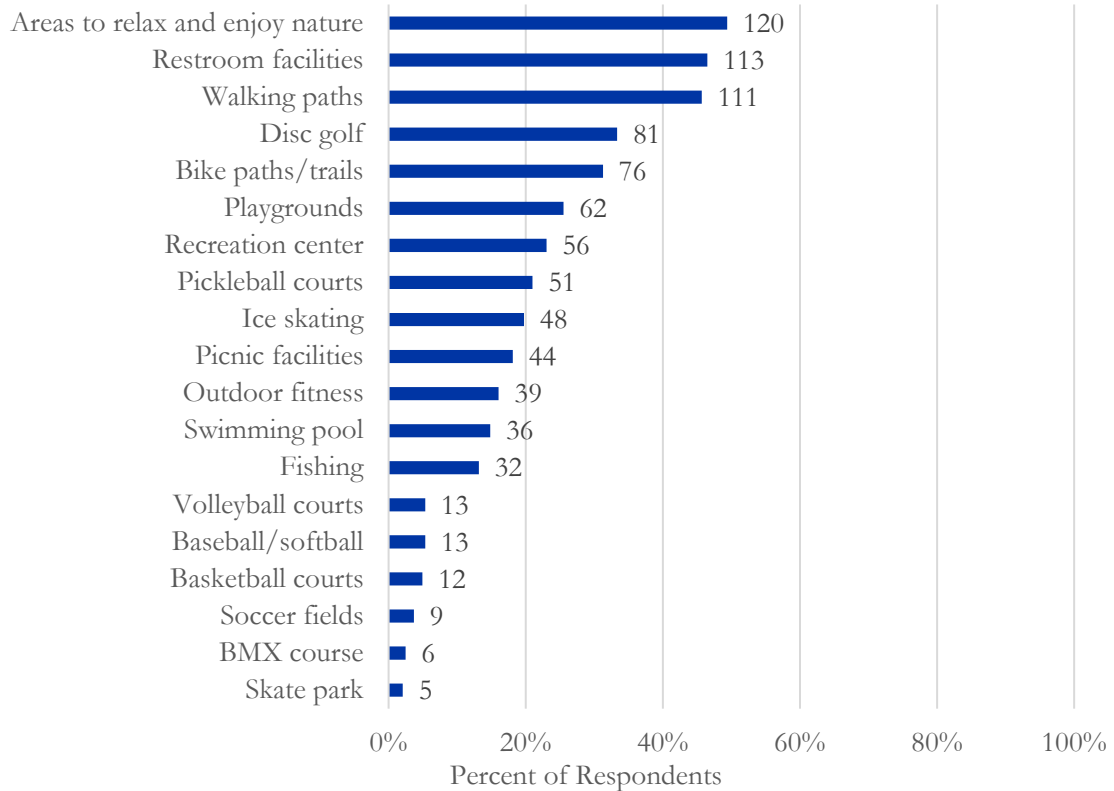


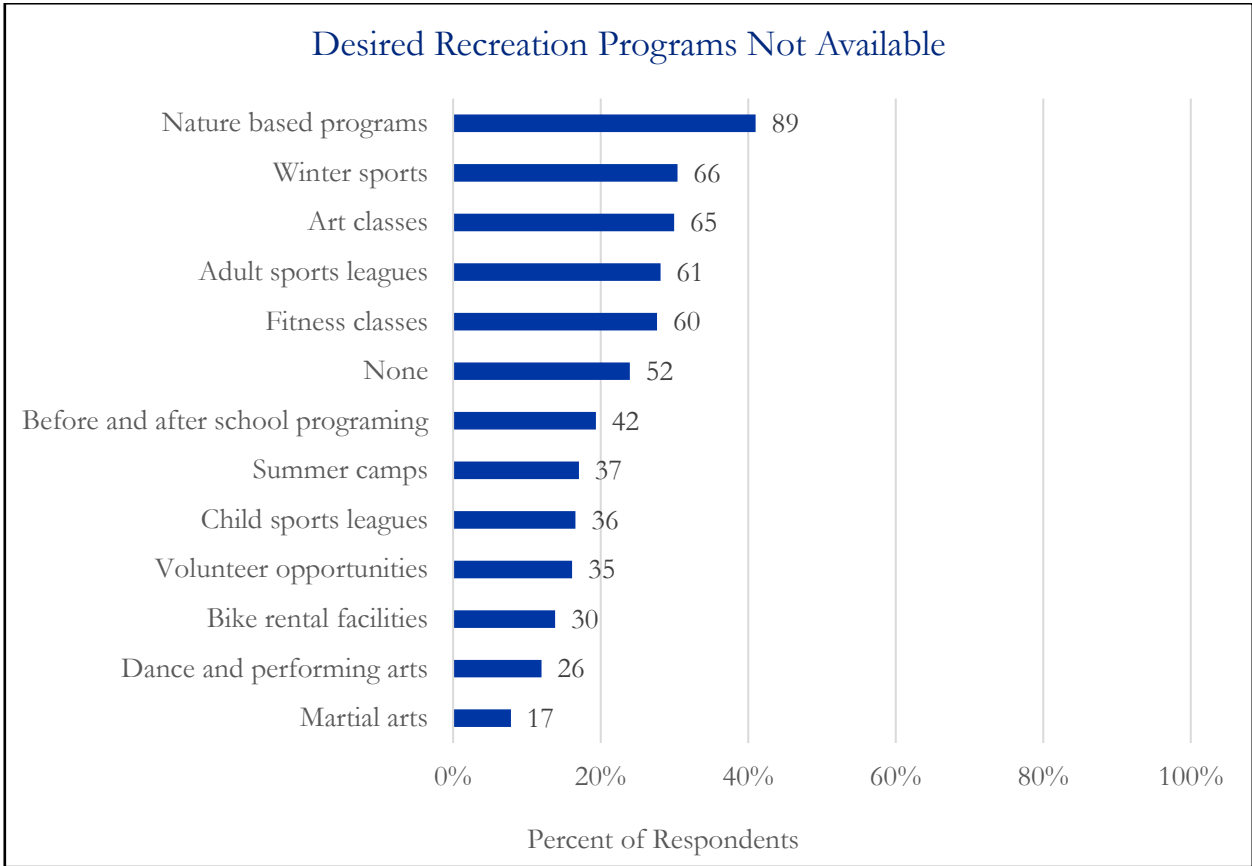
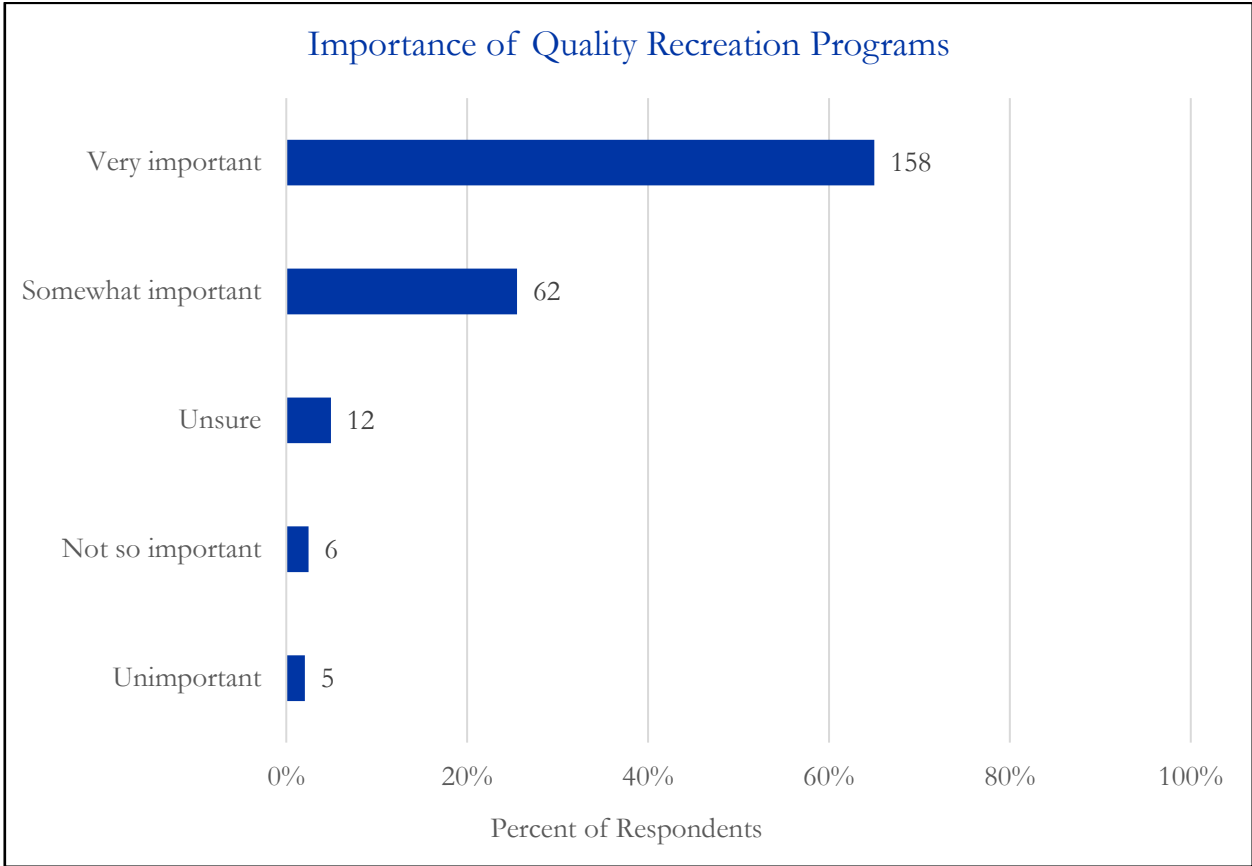


### Recreation Facilities Used Outside City of Hastings

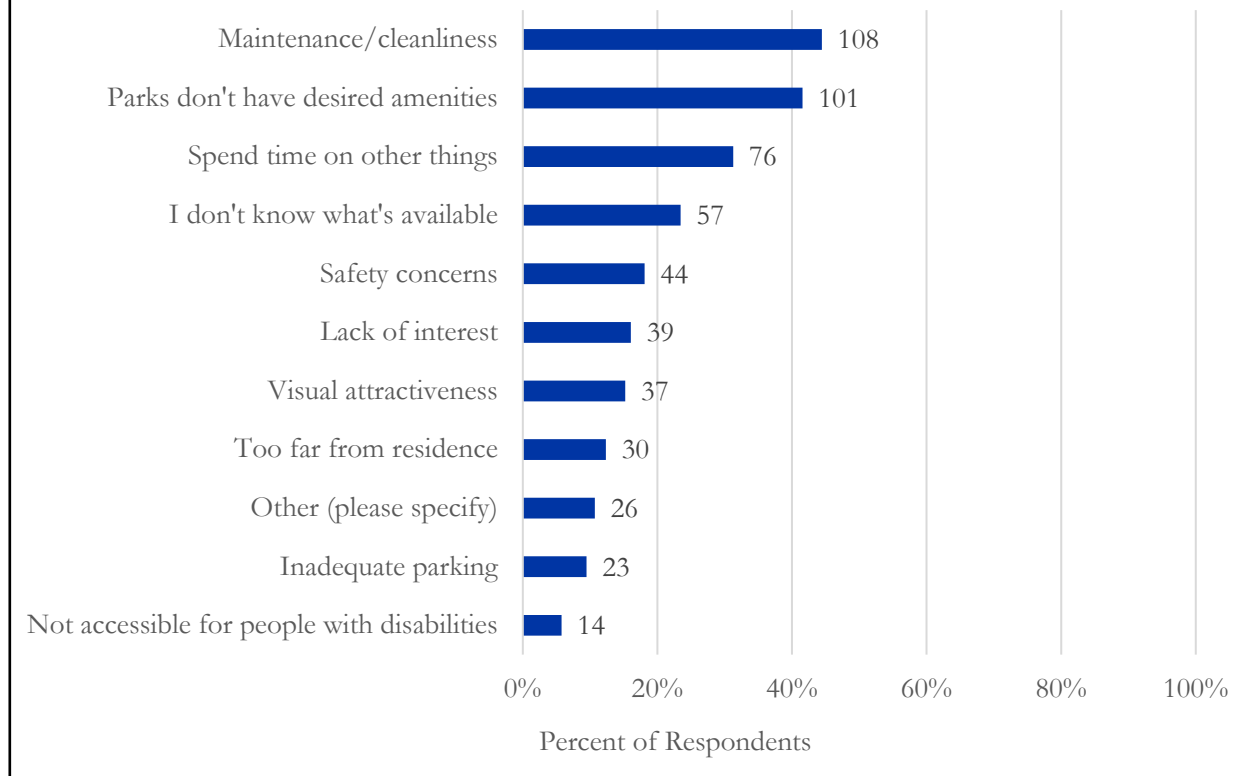


### Desired Recreational Facilities





## Top Reasons Parks, Facilities, or Programs are Not Used

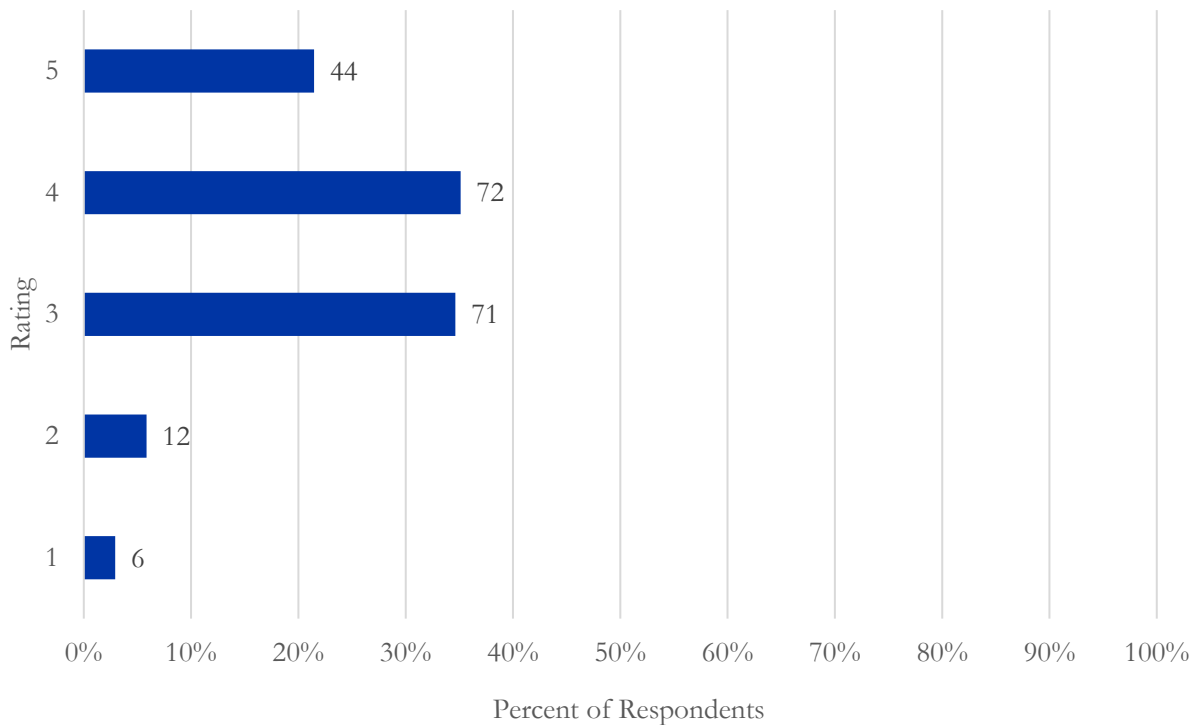


### Other (Specified Reasons):

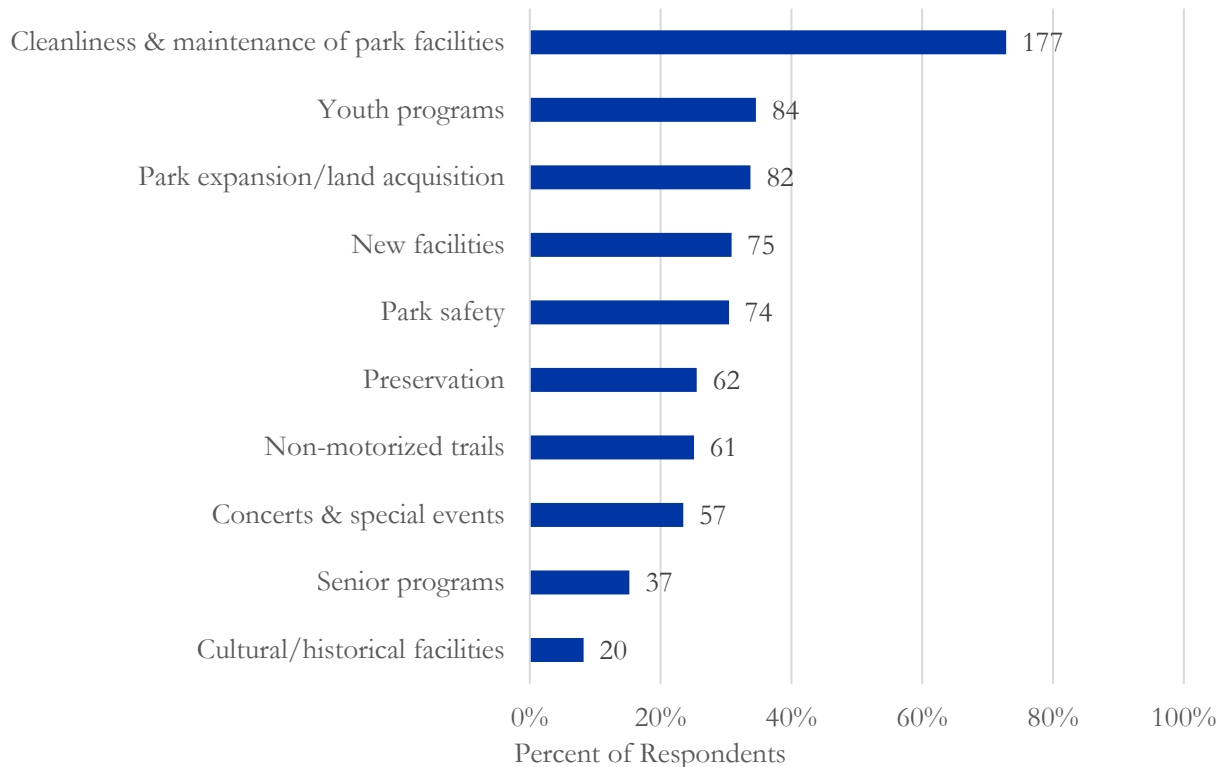
- Age
- Bathroom Access
- Disc Golf putting course at Hammond
- Few amenities/activities for very young children
- Fun and comfortable furniture would be a draw
- Grounds are unkept
- Hastings needs ice rinks
- Have a dog and the parks are small and pretty busy
- Homeless in the park, not enough hiking trails
- Lack of gated areas for children with autism
- No pickleball courts
- Not a necessity
- Not enough shaded areas
- Not enough toddler play equipment/activities
- Not monitored so sketchy people around.
- Pickleball not available
- Playground outdated
- Bball and tennis courts poor
- Restrooms
- Tangle town needs to go.
- Time for something cool. BMX!
- Toilets, dog walking paths, benches



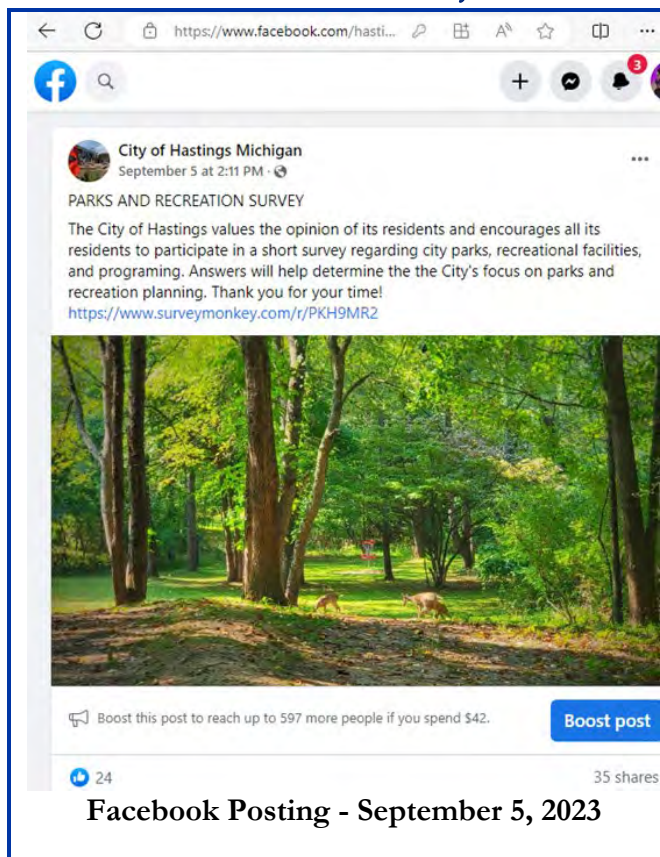
**Quality Rating of Hastings Recreation Programs**  
 (Scale 1-5, 5 is best), **Average Rating: 3.66** (205 Respondents)



**Funding Focus for Next Five Years**

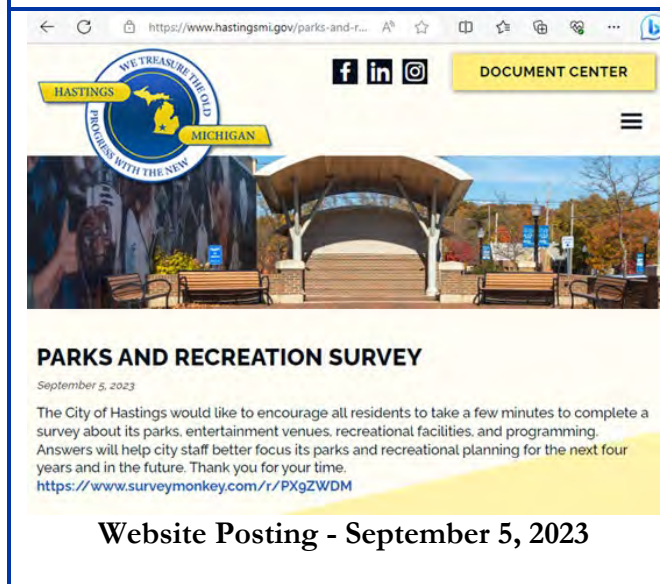


## Survey Advertisement Methods - Exhibits



The screenshot shows a Facebook post from the City of Hastings Michigan, dated September 5 at 2:11 PM. The post is titled "PARKS AND RECREATION SURVEY" and contains the following text: "The City of Hastings values the opinion of its residents and encourages all its residents to participate in a short survey regarding city parks, recreational facilities, and programming. Answers will help determine the the City's focus on parks and recreation planning. Thank you for your time!" followed by the URL <https://www.surveymonkey.com/r/PKH9MR2>. Below the text is a photograph of a lush green park with tall trees and a path. At the bottom of the post, it says "24" likes and "35 shares". A "Boost post" button is visible.

**Facebook Posting - September 5, 2023**



The screenshot shows a website page for the City of Hastings Michigan. The header includes the city logo with the text "WE TREASURE THE GOOD MICHIGAN" and "HASTINGS MICHIGAN", along with social media icons for Facebook, LinkedIn, and Instagram, and a "DOCUMENT CENTER" button. Below the header is a photograph of a park entrance with a covered walkway and benches. The main heading is "PARKS AND RECREATION SURVEY" with the date "September 5, 2023". The text reads: "The City of Hastings would like to encourage all residents to take a few minutes to complete a survey about its parks, entertainment venues, recreational facilities, and programming. Answers will help city staff better focus its parks and recreational planning for the next four years and in the future. Thank you for your time." followed by the URL <https://www.surveymonkey.com/r/PX9ZWDM>.

**Website Posting - September 5, 2023**



The graphic features a light green background with the title "Public Input Survey" in a large, bold, green font. Below the title, the text reads: "The City's Five-Year Master Park & Recreation Plan is being updated this fall. Please help us by completing a survey about your preferences and experiences." To the right of this text is a stylized illustration of several green trees with brown trunks. At the bottom, the text says "To access the survey, please visit:" followed by the URL <https://www.surveymonkey.com/r/PX9ZWDM>. Below the URL is a small version of the City of Hastings Michigan logo.

**Posted Paper Advertisements**

APPENDIX C. NOTICE OF DRAFT PLAN FOR 30 DAYS OF PUBLIC COMMENT

AFFIDAVIT OF PUBLICATION

STATE OF MICHIGAN  
County of Barry


Fredric J Jacobs being duly sworn, deposes and says the annexed true copy of a notice was taken from:

Hastings Banner

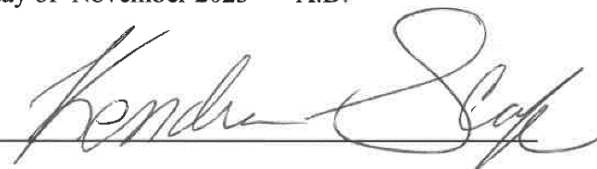
a newspaper printed and circulated in said State and County

Dates: 11-9

2023 AD that he/she is the agent of the printers of said newspaper, and knows well the facts stated herein.

Witness 

Subscribed and sworn to before me this 9th day of November 2023 A.D.



KENDRA SCAFE  
NOTARY PUBLIC - STATE OF MICHIGAN  
COUNTY OF BARRY  
My Commission Expires May 25, 2029  
Acting in the County of Barry

**NOTICE:**  
**DRAFT CITY OF HASTINGS MASTER PARK AND RECREATION PLAN AVAILABLE**  
**Posted: November 9, 2023**

The City of Hastings has made its Draft 2024 - 2028 Master Park and Recreation Plan available for public review for a 30-day period starting November 9, 2023. Members of the public are encouraged to review the plan and provide comments within this comment period. This will allow staff to have time to utilize input received to modify the draft prior to its presentation to the Hastings City Council for a public hearing and adoption of the final plan. A separate hearing notice will follow once the hearing is scheduled.

A copy of the draft plan can be found on the City's website [www.hastingsmi.gov](http://www.hastingsmi.gov). A hard copy of the plan can be reviewed at the City Clerk's office, 201 E. State St, Hastings, MI 49058 and at the Hastings Public Library located at 227 E. State St, Hastings, MI 49058. Comments or questions related to the plan can be directed to: City Manager Sarah Moyer-Cale at [smoyer-cale@hastingsmi.gov](mailto:smoyer-cale@hastingsmi.gov) or by phone at 269-945-2468.

208318

APPENDIX D. PUBLIC HEARING NOTICE

AFFIDAVIT OF PUBLICATION

STATE OF MICHIGAN  
County of Barry

Fredric J Jacobs being duly sworn, deposes and says the annexed true copy of a notice was taken from:

Hastings Banner

a newspaper printed and circulated in said State and County

Dates: 12-14

2023 AD that he/she is the agent of the printers of said newspaper, and knows well the facts stated herein.

Witness

Subscribed and sworn to before me this 14th  
day of December 2023 A.D.

KENDRA SCAFE  
NOTARY PUBLIC - STATE OF MICHIGAN  
COUNTY OF BARRY  
My Commission Expires May 25, 2029  
Acting in the County of Barry





---

APPENDIX E. MINUTES FROM PUBLIC HEARING

4374

**City of Hastings**  
COUNTY OF BARRY, STATE OF MICHIGAN

---

**City Council Minutes**  
**January 8, 2024**

1. Regular meeting called to order at 7:00 PM
2. Roll call  

Present at roll call were: Barlow, Brehm, Furrow, Jarvis, McLean, Nesbitt, Resseguie, and Tossava.

Motion by Resseguie, with support from Barlow, to excuse Councilmember Bowers.

All ayes. Motion carried.

City Staff and appointees present: Moyer-Cale, Bever, Boulter, Jordan and Tate.
3. Pledge to the flag
4. Approval of the agenda  

Motion by McLean, with support from Jarvis, to approve the agenda as amended in Item 12C: to appoint the city attorney in addition to other board appointments.

Ayes: Barlow, Brehm, Furrow, Jarvis, McLean, Nesbitt, Resseguie, and Tossava.  
Nays: None.  
Absent: Bowers.  
Motion carried.
5. Mayor's Address  

Mayor presented address to council and public.
6. Elect Mayor Pro-Tem  

Motion by Barlow, with support from Jarvis, to elect Resseguie as Mayor Pro-Tem.

All ayes. Motion carried.
7. Approval of the minutes of the December 26, 2023 regular meeting.  

Motion by Jarvis, with support from Furrow, to approve the minutes of the December 26, 2023, regular meeting.

Ayes: Barlow, Brehm, Furrow, Jarvis, McLean, Nesbitt, Resseguie, and Tossava.  
Nays: None.

Absent: Bowers.  
Motion carried.

8. Public Hearings:

Public hearing to accept comment from the public regarding the City's 2024-2028 Draft Master Park and Recreation Plan.

Comments from Moyer-Cale.

Questions and comments from Jarvis and Tossava.

Open Public Hearing: 7:17 PM.

Comments: None.

Closed Public Hearing: 7:17 PM

9. Public Comment: None.

10. Formal Recognitions and Presentations:

- A. Presentation of annual financial audit for fiscal year ending June 30, 2023 by Ian Rees of Gabridge and Company.

Comments from Bever.

- B. Presentation from Dave Hatfield, Barry County Commissioner.

Comments from Jarvis.

Questions from Resseguie and Tossava.

11. Items for Action by Unanimous Consent:

- A. Receive and place on file seven (7) invoices totaling \$131,692.72 as detailed in attachments.

Motion by McLean, with support from Brehm, to receive and place on file seven (7) invoices totaling **\$131,692.72** as detailed in attachments.

Ayes: Barlow, Brehm, Furrow, Jarvis, McLean, Nesbitt, Resseguie, and Tossava.

Nays: None.

Absent: Bowers.

Motion carried.

12. Items of Business:

A. Adopt City Council Rules of Procedure for 2024.

Motion by Nesbitt, with support from McLean, to adopt City Council rules of Procedure for 2024.

Ayes: Barlow, Brehm, Furrow, Jarvis, McLean, Nesbitt, Resseguie, and Tossava.

Nays: None.

Absent: Bowers.

Motion carried.

B. Consider 2024 Public Notice Calendar of regular Council meetings as the second and fourth Mondays of each month.

Motion by Jarvis, with support from McLean, to approve the 2024 Public Notice Calendar of regular Council meetings as the second and fourth Mondays of each month.

Ayes: Barlow, Brehm, Furrow, Jarvis, McLean, Nesbitt, Resseguie, and Tossava.

Nays: None.

Absent: Bowers.

Motion carried.

C. Consider Mayor's 2024 recommendations for appointments with consent of Council (see attachment).

Motion by Barlow, with support from Resseguie, to approve the Mayor's 2024 recommendations for appointments.

Ayes: Barlow, Brehm, Furrow, Jarvis, McLean, Nesbitt, Resseguie, and Tossava.

Nays: None.

Absent: Bowers.

Motion carried.

D. Consider adoption of **Resolution 2024-01** to adopt the City of Hastings Five-Year Park and Recreation Master Plan.

Motion by Resseguie, with support from Furrow, to adopt of **Resolution 2024-01** to adopt the City of Hastings Five-Year Park and Recreation Master Plan.

Ayes: Barlow, Brehm, Furrow, Jarvis, McLean, Nesbitt, Resseguie, and Tossava.

Nays: None.

Absent: Bowers.

Motion carried.

E. Consider the purchase of two (2) replacement portable radios and one (1) replacement mobile truck radio from C-Comm of Kalamazoo, Inc. in the amount of **\$12,437.96**.

Questions from Brehm, Jarvis, and Tossava.

Motion by Nesbitt, with support from McLean, to approve the purchase of two (2) replacement portable radios and one (1) replacement mobile truck radio from C-Comm of Kalamazoo, Inc. in the amount of **\$12,437.96**.

Ayes: Barlow, Brehm, Furrow, Jarvis, McLean, Nesbitt, Resseguie, and Tossava.  
Nays: None.  
Absent: Bowers.  
Motion carried.

- F. Consider approval of a quote for the removal and replacement of an 8" plug valve for the north primary clarifier at the city's wastewater treatment plant from W Soule in the amount of **\$6,195**.

Motion by Barlow, with support from Jarvis, to approve the quote for the removal and replacement of an 8" plug valve for the north primary clarifier at the city's wastewater treatment plant from W Soule in the amount of **\$6,195**.

Ayes: Barlow, Brehm, Furrow, Jarvis, McLean, Nesbitt, Resseguie, and Tossava.  
Nays: None.  
Absent: Bowers.  
Motion carried.

- G. Consider setting a council workshop on January 22, 2024, at 6:00 PM to discuss Council's goals for the upcoming fiscal year.

Question from Tossava.

Comment from Moyer-Cale.

Motion by McLean, with support from Furrow, to set a council workshop on January 22, 2024, at 6:00 PM to discuss Council's goals for the upcoming fiscal year.

All ayes. Motion carried.

- 13. Staff Presentations and Policy Discussions (None)

- 14. City Manager Report:

- A. Fire Chief Jordan presented his monthly and annual reports.  
Comments from Jordan.
- B. Assessor Rashid's monthly report was received.
- C. Public Services Director Tate Annual Report

Comments from Tate.



15. Reports and Communications:

- A. 2024 City of Hastings Observed Holidays
- B. 2024 Payroll Calendar
- C. CIP and Budget Development Calendar Fiscal Year Ending 2025
- D. 2024 Planner
- E. Event Calendar January 2024

Motion by McLean, with support from Barlow, to accept items A-E and place on file.

All ayes. Motion carried.

16. Public Comment: None.

17. Mayor and Council comment:

Comments from Resseguie, Jarvis, Nesbitt, and Tossava.

18. Adjourn

Motion by McLean, with support from Nesbitt, to adjourn at 7:52 PM.

All ayes. Motion carried.

Read and Approved:



David J. Tossava, Mayor



Christopher R. Bever, City Clerk

**City of Hastings**  
COUNTY OF BARRY, STATE OF MICHIGAN

**City Council Minutes**  
**January 8, 2024**

1. Regular meeting called to order at 7:00 PM
2. Roll call  

Present at roll call were: Barlow, Brehm, Furrow, Jarvis, McLean, Nesbitt, Resseguie, and Tossava.

Motion by Resseguie, with support from Barlow, to excuse Councilmember Bowers.

All ayes. Motion carried.

City Staff and appointees present: Moyer-Cale, Bever, Boulter, Jordan and Tate.
3. Pledge to the flag
4. Approval of the agenda  

Motion by McLean, with support from Jarvis, to approve the agenda as amended in Item 12C: to appoint the city attorney in addition to other board appointments.

Ayes: Barlow, Brehm, Furrow, Jarvis, McLean, Nesbitt, Resseguie, and Tossava.  
Nays: None.  
Absent: Bowers.  
Motion carried.
5. Mayor's Address  

Mayor presented address to council and public.
6. Elect Mayor Pro-Tem  

Motion by Barlow, with support from Jarvis, to elect Resseguie as Mayor Pro-Tem.

All ayes. Motion carried.
7. Approval of the minutes of the December 26, 2023 regular meeting.  

Motion by Jarvis, with support from Furrow, to approve the minutes of the December 26, 2023, regular meeting.

Ayes: Barlow, Brehm, Furrow, Jarvis, McLean, Nesbitt, Resseguie, and Tossava.  
Nays: None.

Absent: Bowers.  
Motion carried.

8. Public Hearings:

Public hearing to accept comment from the public regarding the City's 2024-2028 Draft Master Park and Recreation Plan.

Comments from Moyer-Cale.

Questions and comments from Jarvis and Tossava.

Open Public Hearing: 7:17 PM.

Comments: None.

Closed Public Hearing: 7:17 PM

9. Public Comment: None.

10. Formal Recognitions and Presentations:

- A. Presentation of annual financial audit for fiscal year ending June 30, 2023 by Ian Rees of Gabridge and Company.

Comments from Bever.

- B. Presentation from Dave Hatfield, Barry County Commissioner.

Comments from Jarvis.

Questions from Resseguie and Tossava.

11. Items for Action by Unanimous Consent:

- A. Receive and place on file seven (7) invoices totaling \$131,692.72 as detailed in attachments.

Motion by McLean, with support from Brehm, to receive and place on file seven (7) invoices totaling **\$131,692.72** as detailed in attachments.

Ayes: Barlow, Brehm, Furrow, Jarvis, McLean, Nesbitt, Resseguie, and Tossava.

Nays: None.

Absent: Bowers.

Motion carried.

12. Items of Business:

A. Adopt City Council Rules of Procedure for 2024.

Motion by Nesbitt, with support from McLean, to adopt City Council rules of Procedure for 2024.

Ayes: Barlow, Brehm, Furrow, Jarvis, McLean, Nesbitt, Resseguie, and Tossava.

Nays: None.

Absent: Bowers.

Motion carried.

B. Consider 2024 Public Notice Calendar of regular Council meetings as the second and fourth Mondays of each month.

Motion by Jarvis, with support from McLean, to approve the 2024 Public Notice Calendar of regular Council meetings as the second and fourth Mondays of each month.

Ayes: Barlow, Brehm, Furrow, Jarvis, McLean, Nesbitt, Resseguie, and Tossava.

Nays: None.

Absent: Bowers.

Motion carried.

C. Consider Mayor's 2024 recommendations for appointments with consent of Council (see attachment).

Motion by Barlow, with support from Resseguie, to approve the Mayor's 2024 recommendations for appointments.

Ayes: Barlow, Brehm, Furrow, Jarvis, McLean, Nesbitt, Resseguie, and Tossava.

Nays: None.

Absent: Bowers.

Motion carried.

D. Consider adoption of **Resolution 2024-01** to adopt the City of Hastings Five-Year Park and Recreation Master Plan.

Motion by Resseguie, with support from Furrow, to adopt of **Resolution 2024-01** to adopt the City of Hastings Five-Year Park and Recreation Master Plan.

Ayes: Barlow, Brehm, Furrow, Jarvis, McLean, Nesbitt, Resseguie, and Tossava.

Nays: None.

Absent: Bowers.

Motion carried.

E. Consider the purchase of two (2) replacement portable radios and one (1) replacement mobile truck radio from C-Comm of Kalamazoo, Inc. in the amount of **\$12,437.96**.

Questions from Brehm, Jarvis, and Tossava.



Motion by Nesbitt, with support from McLean, to approve the purchase of two (2) replacement portable radios and one (1) replacement mobile truck radio from C-Comm of Kalamazoo, Inc. in the amount of **\$12,437.96**.

Ayes: Barlow, Brehm, Furrow, Jarvis, McLean, Nesbitt, Resseguie, and Tossava.  
Nays: None.  
Absent: Bowers.  
Motion carried.

- F. Consider approval of a quote for the removal and replacement of an 8" plug valve for the north primary clarifier at the city's wastewater treatment plant from W Soule in the amount of **\$6,195**.

Motion by Barlow, with support from Jarvis, to approve the quote for the removal and replacement of an 8" plug valve for the north primary clarifier at the city's wastewater treatment plant from W Soule in the amount of **\$6,195**.

Ayes: Barlow, Brehm, Furrow, Jarvis, McLean, Nesbitt, Resseguie, and Tossava.  
Nays: None.  
Absent: Bowers.  
Motion carried.

- G. Consider setting a council workshop on January 22, 2024, at 6:00 PM to discuss Council's goals for the upcoming fiscal year.

Question from Tossava.

Comment from Moyer-Cale.

Motion by McLean, with support from Furrow, to set a council workshop on January 22, 2024, at 6:00 PM to discuss Council's goals for the upcoming fiscal year.

All ayes. Motion carried.

- 13. Staff Presentations and Policy Discussions (None)

- 14. City Manager Report:

- A. Fire Chief Jordan presented his monthly and annual reports.  
Comments from Jordan.
- B. Assessor Rashid's monthly report was received.
- C. Public Services Director Tate Annual Report

Comments from Tate.

## 15. Reports and Communications:

- A. 2024 City of Hastings Observed Holidays
- B. 2024 Payroll Calendar
- C. CIP and Budget Development Calendar Fiscal Year Ending 2025
- D. 2024 Planner
- E. Event Calendar January 2024

Motion by McLean, with support from Barlow, to accept items A-E and place on file.

All ayes. Motion carried.

## 16. Public Comment: None.

## 17. Mayor and Council comment:

Comments from Resseguie, Jarvis, Nesbitt, and Tossava.

## 18. Adjourn

Motion by McLean, with support from Nesbitt, to adjourn at 7:52 PM.

All ayes. Motion carried.

Read and Approved:



David J. Tossava, Mayor



Christopher R. Bever, City Clerk

**City Of Hastings**  
COUNTY OF BARRY, STATE OF MICHIGAN

**RESOLUTION 2024-01**

**TO ADOPT THE CITY OF HASTINGS FIVE-YEAR PARK AND RECREATION MASTER PLAN (2024 – 2028)**

WHEREAS, the City of Hastings has undertaken a planning process to determine the recreation and natural resource conservation needs and desires of its residents during a five-year period covering the years of 2024 through 2028; and

WHEREAS, the City Park and Recreation Committee and City Staff began the process of developing a Park and Recreation Master Plan in accordance with the most recent guidelines developed by the Department of Natural Resources and made available to local communities; and

WHEREAS, the public was given a well-advertised opportunity and reasonable accommodations to review the final draft plan for a period of greater than thirty (30) days; and

WHEREAS, a properly noticed public hearing was held on Monday, January 8, 2024 at 7:00 p.m. in Council Chambers at Hastings City Hall, 201 E State St, Hastings, Michigan 49058 to provide an opportunity for all residents of the planning area to express opinions, ask questions and discuss all aspects of the Five-Year Master Park and Recreation Plan; and

WHEREAS, after the public hearing, the City Council of the City of Hastings voted to adopt the Five-Year Park and Recreation Master Plan 2024 – 2028,

THEREFORE, BE IT RESOLVED that the City Council of the City of Hastings hereby adopts the City of Hastings Five-Year Park and Recreation Master Plan 2024 – 2028.

A motion to adopt the foregoing resolution being offered by Member Resseguie, with support by Member Furrow.

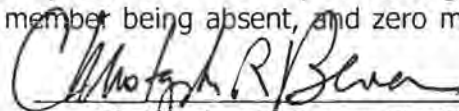
YEAS: Barlow, Brehm, Furrow, Jarvis, McLean, Nesbitt, Resseguie, and Tossava.

NAYS: None.

ABSENT: Bowers.

MOTION DECLARED ADOPTED.

I hereby certify that the foregoing resolution was adopted at a duly held and attended regular meeting the 8<sup>th</sup> day of January 2024, by the City Council of the City of Hastings, by a vote of eight members voting in favor thereof, one member being absent, and zero members voting against.

  
Christopher R. Bever, City Clerk

---

## APPENDIX G. TRANSMITTAL LETTERS



City of *Hastings* Michigan

(269) 945-2468  
FAX (269) 948-9544

201 E. State Street 49058

January 15, 2024

James McManus, Director  
Barry County Planning and Zoning  
Barry County Court House - Ground Floor  
220 W. State St  
Hastings, MI 49058

Dear Mr. McManus:

Enclosed for your review is a copy of the updated City of Hastings Park and Recreation Master Plan adopted by the City Council on January 8, 2024. We welcome your review and feedback concerning the Plan's contents. This plan is being submitted in accordance with the Michigan Department of Natural Resources' guidelines for preparing a community recreation plan.

If you would like any additional information, please feel free to call or email me at your convenience.

Sincerely,

A handwritten signature in blue ink, appearing to read "Sarah Moyer-Cale", is written over a light blue horizontal line.

Sarah Moyer-Cale  
City Manager





City of *Hastings* Michigan

(269) 945-2468  
FAX (269) 948-9544

201 E. State Street 49058

January 15, 2024

Southcentral Michigan Planning Council  
300 South Westnedge Ave  
Kalamazoo, MI 49007

Dear SCMPC:

Enclosed for your review is a copy of the updated City of Hastings Park and Recreation Master Plan adopted by the City Council on January 8, 2024. We welcome your review and feedback concerning the Plan's contents. This plan is being submitted in accordance with the Michigan Department of Natural Resources' guidelines for preparing a community recreation plan.

If you would like any additional information, please feel free to call or email me at your convenience.

Sincerely,

Sarah Moyer-Cale  
City Manager