



# *2024 - 2025* DOWNTOWN HASTINGS **Sculpture Tour**

Presented by The Hastings Downtown Development Authority  
and Thornapple Arts Council



*Sponsored by...*



[www.downtownhastings.com](http://www.downtownhastings.com)



**Thornapple  
Arts Council**

[www.thornapplearts.org](http://www.thornapplearts.org)



**ART WORKS.**

**National  
Endowment  
for the Arts**

[arts.gov](http://arts.gov)



**MICHIGAN  
ARTS &  
CULTURE  
COUNCIL**

## Hastings Welcomes You to our 14th annual Downtown Hastings Sculpture Exhibit

The 2023/2024 exhibit features 32 unique sculptures demonstrating the community's continued commitment to the aesthetic and cultural enhancement of our downtown.

You may have noticed a few changes to this year's sculpture program. Most of the sculptures located on State Street have been relocated to some of our side streets. This is due to our streetscape project that will be completed by the spring of 2024. At the conclusion of this project, we hope to have even more locations for future downtown sculptures. We appreciate your patience and understanding while we complete this large project.

We hope you enjoy this free walkable outdoor exhibit that is displayed year-round. Please return often to take in all that our downtown has to offer.

### Kaleidoscope Skies

**Artist: GAIL CHRISTOFFERSON**  
**Bowling Green, OH**

**Material: Mosaic glass on steel disc,  
mounted on stone  
Weight: 500 lbs.**



Christofferson's passion for glass, community projects, and creating mosaic art has taken her on a wonderful journey. Christofferson is a full time nationally recognized artist whose approach has evolved from commercial art, design, and marketing. Her success with mosaic artwork has enabled me to move from the design field to pursue mosaic art full time. Christofferson's latest work has been geared towards large-scale projects, many of them community based. She has begun to expand her body of work to include sculptural applications for her mosaics. Christofferson's corporate clients find a mosaic piece provides a fresh and unique form of art for their facility. She is recognized for her attention to detail from concept to installation.

**Price: \$15,000**

## 2 The Wave Rider



**Artist: PAMELA REITHMEIR**  
**Monclova, OH**

**Material: Steel and Paint**  
**Weight: 300 lbs.**

I love to see people interact with my sculptures. Whether it is a nod of the head, a smile, or having their picture taken with my pieces; it does not matter as long as there is a connection in some way between the sculpture and the viewer. I have found I am drawn to making sculptures inspired by nature and geometric patterns. I particularly enjoy the permanency and strength of steel and the mental and physical challenges that come with working in this medium.

**Price: \$7,000**

# 3 Meeting in the Middle



**Artist: JENNIFER MEYER**  
**Lansing, IL**

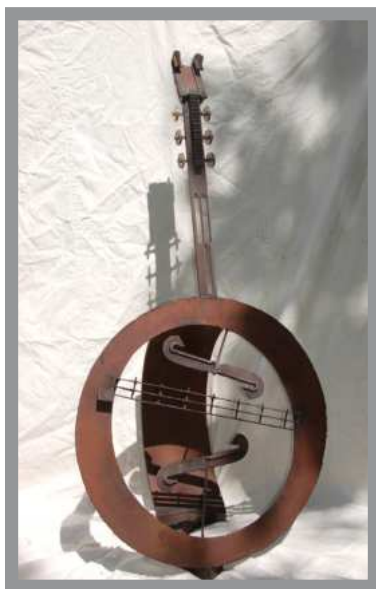
**Material: Found Objects**  
**Weight: 300 lbs.**

Each of my sculptures are a reincarnation of many purposeful past lives. My approach in creating public art is to invite the viewer to reflect upon what we consider discards and to perhaps be more thoughtful about personal reuse. My work with found objects as a sculptor is the same as my work with clients as a licensed clinical professional counselor. Just because something or someone has been used, discarded, abandoned, or rejected does not mean that there is no longer any potential or value. Often what is needed for recovery is a little time and attention to construct a new perspective so that a renewal may emerge. This is my life's work with objects and with humans. My goal is to continue this experience until I have no breath left.

**Price: \$6,500**



## 4 Bass



**Artist: MICHAEL MAGNOTTA**  
**East Lansing, MI**

**Material: Mild Steel**  
**Weight: 300 lbs.**

As a sculptor, privileged to have my work in the public sphere, I feel a responsibility to engage the viewer and provide a positive visual presence to the community. My journey in the arts began some 35 years ago in photography. Architectural studies broadened my artistic horizons as I learned how the integration of materials in a thoughtful design impacts the environment. In a transition from architecture to sculpture, I found expression in creating art from industrial remnants and cast-offs. With inspiration from the masters of the genre, my work arises from my experiences and things I love - jazz, space, nature, mankind, and beauty in all its manifestations. The Japanese aesthetic of wabi-sabi, beauty in the imperfect and the natural time-worn patina, also resonates in my art. My sculptures typically begin with a trip to the metal yard. There, among the industrial detritus, I gather my palette, much as a painter chooses their paints. From the shapes and textures I rescue, a conversation takes place - a visual conversation - that results in the three-dimensional work comprising my sculptures.

**Price: \$15,000**

# 5 Old Orchard



**Artist: TODD KIIME**  
**Toledo, OH**

**Material: Steel**  
**Weight: 1200 lbs.**

From Architecture to art, a passion for the creative process drives My work. Using a wide spectrum of materials in various genres of art, I create art for other's enjoyment. A sense of whimsy is always prevalent in my work.

Art allows me to share my passion.

**Price: \$17,500**

## **6 Three Tenors**



**Artist: RIC LEICHLITER  
Lancaster, OH**

**Material: Steel  
Weight: 100 lbs. each (x3)**

**Price: \$2,850**



## To Bee or Not to Bee II

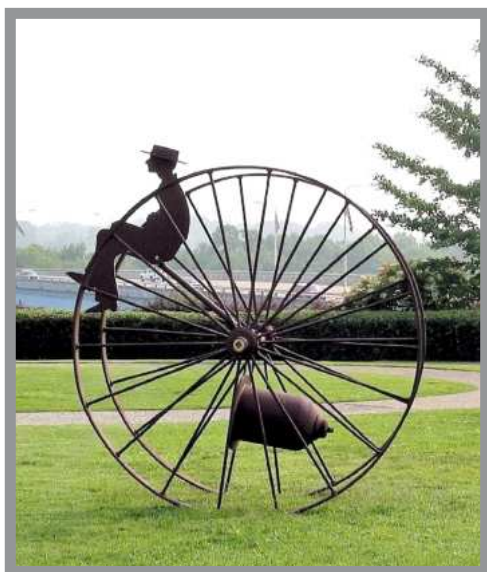


**Artist: ALEX MENDEZ**  
**Decatur, IN**

**Material: Stainless Steel**

**Price \$5,000**

# Big Wheel Watcher



**Artist: JIM COLLINS**  
**Signal Mountain, TN**

**Material: Mixed metals with powder coat finish**  
**Weight: 100 lbs.**

Primarily a Public Art sculptor working in figurative manner, best exemplified by my long running series the WATCHER. My sculpture style has been characterized by the use of silhouettes of people and animals constructed of stainless steel, aluminum and other metals. My Colorful silhouettes can be found in many collections in the United States and Ireland with the majority located in the Southeastern United States.

**Price: \$5,000**



Artist: JOE KRAJKIEWCZ  
Grandville, MI

Material: 7 GA Steel  
Weight: 100 lbs.

"My passion for creating art is inspired by the rugged majesty found in America's forests and wildlife. As an artist and outdoorsman, sculpture

provides a medium to share my experiences with others.

Working with steel allows me to emulate nature's enduring strength in each individual sculpture. Through the fabrication process, I permanently capture form and movement. Each piece is painted from a bold color palette to heighten one's visual awareness and stimulate the imagination. I aspire to convey elements of modern art and rustic décor in each sculpture."

Generously donated to the City of Hastings in memory of Richard A. Beduhn by the Richard A. and Kathleen S. Beduhn Trust. September 2015

# FLATLANDERS

SCULPTURE SUPPLY

ART GALLERIES

# MSI

Midwest Sculpture Initiative  
Blissfield, Michigan

**Flatlanders Sculpture Supply** is a full-service sculpture resource available to construct artworks for many public and private projects; in addition to numerous other services related to sculpture; there is **Flatlanders Art Galleries**, featuring two galleries, a fine craft gallery and an outdoor sculpture park.

Additionally, the **Midwest Sculpture Initiative (MSI)** offers outdoor sculpture exhibits throughout Michigan, Ohio and Indiana, as a way to promote economic development.

Flatlanders and MSI are located 1 ½ miles east of Blissfield MI, at 11993 East US Highway 223. For more information visit our websites:

## 10 First Flight



**Artist: RUTH GEE  
Hastings, MI**

**Material: Bronze  
Weight: 150 lbs.**

*First Flight* represents the metamorphosis we undergo when trying new things. We never know what we are capable of.  
Be brave, take flight.

Generously donated to the City of Hastings in honor of Mayor Bob May by James Kwak, Hastings Rotary Club, Bosley Pharmacy, Hastings Kiwanis Club, and the Downtown Development Authority.  
July 2013

## 11 Forget Me Never



**Artist: PAM REITHMEIER  
Monclova, OH**

**Material: Steel  
Weight: 200 lbs.**

"I love to see people interact with my sculptures. Whether it is a nod of the head, a smile, or having their picture taken with my pieces; it does not matter as long as there is a connection in some way between the sculpture and the viewer. I have found I am drawn to making sculptures inspired by nature. I particularly enjoy the permanency and strength of steel and the mental and physical challenges that come with working in this medium."

Generously donated to the City of Hastings by Al and Pam Jarvis.  
August 2017

## 12 Twisted Melody



**Artist: ALEX MENDEZ**  
**Decatur, IN**

**Material: Steel**  
**Weight: 155 lbs.**

Alex Mendez was born in the rural town of Decatur, Indiana. Alex's background is in music. Having studied classical methods for guitar, he continues to this day as a working musician. This musical background has influenced his journey into metal sculpture.

Alex has been drawn to abstract forms because he believes this provides a way to portray what a musician might visualize in sculptured art.

"Music and love please a person the most together,  
they banish cares and torments of the soul."  
Generously donated to the City of Hastings  
by Dave and Jo Carr.

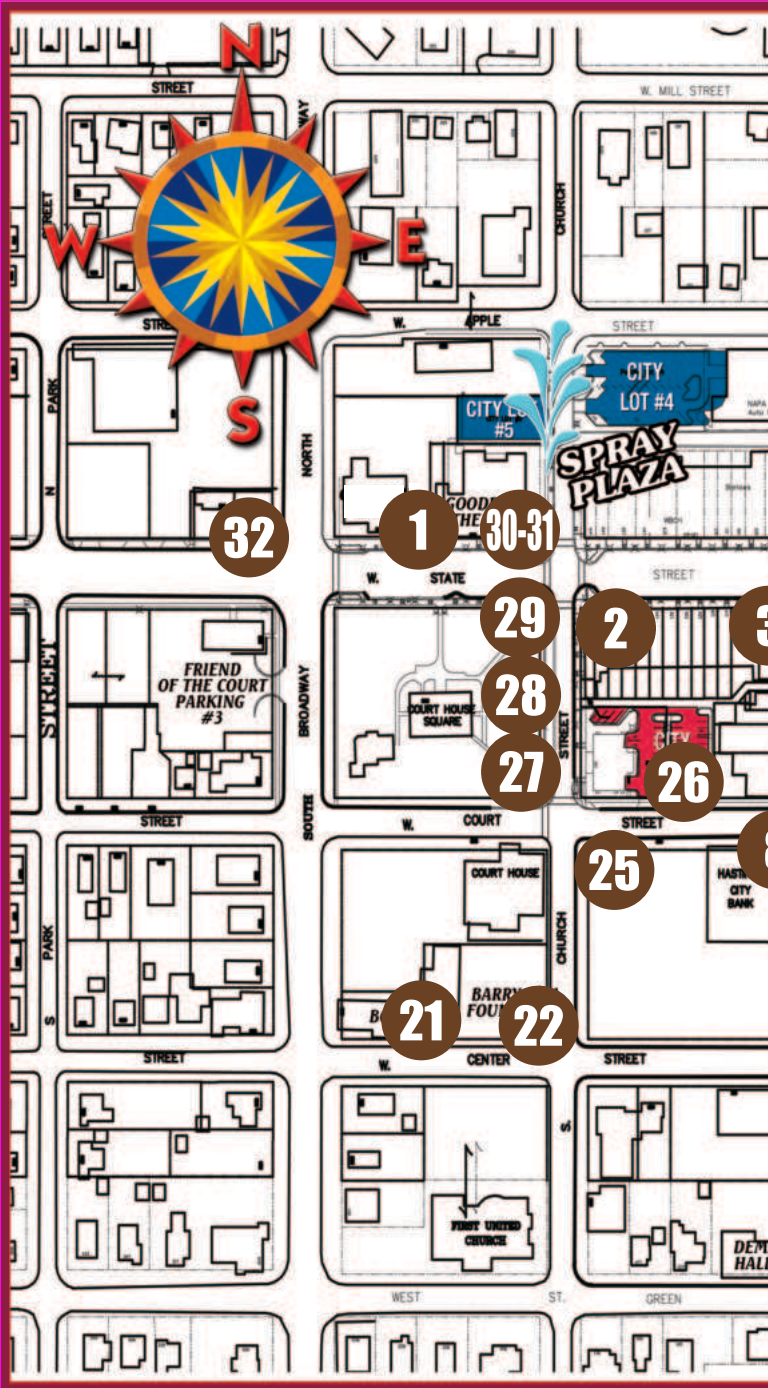




*Indicates  
ALL DAY  
Parking*



*Indicates  
2 & 3 HOUR  
Parking*



*2024-  
2025*

DOWNTOWN HASTINGS **Sculpture**



Tour

## 13 Gaze II



**Artist: JAMES L. OLESON, JR.**  
**Brooksville, FL**

**Material: Mixed Steel**  
**Weight: Approx. 600 lbs.**

"The art of sculpture is to take something considered useless or broken and give it a new life and chance to be a part of something bigger than it ever was. I take an inanimate congregation of objects and put them together in a way that gives them an actual presence that you can feel and touch. Not only can you touch these inanimate objects but they can

touch you back. They visually speak to you, invoking real emotions. When this almost unexplainable connection is happening, the material thought to be useless or broken comes to life. That connection between you and my creations and the emotions that take place gives me much excitement and drives me to create with great passion."

Generously donated to the City of Hastings by the DeCamp Family Foundation.  
September 2013

## 14 A Dream Takes Flight



**Inspired by:**  
**STUART PADNOS**

**Created by:**  
**JUAN LUNA & JAMES MOORE**

**Material: Stainless Steel and Iron**  
**Weight: 150 lbs.**

"Our mentor teaches us that even in scrap there lies a thing of beauty."

Generously donated to the City of Hastings  
by Louis Padnos Iron & Metal Company.  
September 2010

*15-16-17*

## Bookish Butterfly Friendly Frog Dancing Dragonfly

Artist: ANDERSON'S METAL SCULPTURE  
Cedar Springs, MI



Material:

Copper, Brass, and Glass

Weight: Between 25-35 lbs. each

"My finished product is always an attempt to balance the sometimes extreme exaggeration I give to God's natural forms with surface patinas and tones subtle enough to encourage the viewer to never tire of its presence."

Generously donated to the Hastings Public Library by the Friends of the Library and the Thornapple Garden Club. May 2010

## *19* Avian Ascent

Artist: TONI LUCADELLO  
Fostoria, OH



Material: Painted Steel

Weight: 170 lbs.

"My motivation for creating sculptures and wall designs has been two-fold: First, most work is based on science concepts ranging from biology to theoretical physics, with the intent that the science-related titles of the art would stimulate discussion and exploration, perhaps leading to new perspectives and innovations. Second, I want the public to appreciate and understand the subject, form, and content behind a work of art even though they may not like a particular work."

Generously donated to the City of Hastings by the DeCamp Family  
(in recognition of the company's 50th anniversary – Flexfab LLC 1961-2011).  
July 2010



## 19 Reflective Moments



**Artist: RUTH GEE**  
**Hastings, MI**

**Material: Bronze**  
**Weight: Approx. 300 lbs.**

**“Whatever is true, honest, just,  
pure, lovely, admirable, if anything  
is excellent or praiseworthy, think  
on these things.’ (Philippians 4:8).  
These are the words that have  
been the basis for my artwork  
over the years.”**

**Generously donated to the City of Hastings by  
Thomas L. Johnson and the Downtown Development Authority.  
July 2010**



## 20 The Gatherer



**Artist: BRENT HARRIS**  
Kalamazoo, MI

Material: Bronze  
Weight: 300 lbs.

"We are defined by nature, and that mark provides shapes and patterns that repeat the natural world into our bodies and our subconscious. The forms exist in us as a nautical spiral in the curve of an ear, the rolling hills of our spine, or in the root-like structures of our nerves and vasculature. My goal as an artist is to listen to, and somehow speak these truths through my hands and into the metal."

Generously donated to the City of Hastings by  
James Kwak, cofounder of Guidewire Software,  
friend of Hastings Mutual Insurance Company.  
March 2013

## 21 The Tree of Life



**Artist:**  
**RICHARD MORGAN**  
Wauseon, OH

Material: Steel & Found Objects  
Weight: 400 lbs.

"Being able to create something  
out of nothing,  
and making people happy...  
is the best thing  
about being an artist."

Generously donated to the City of Hastings by the  
Barry County Community Foundation.  
February 2021

## 22 Stone Harp



**Artist: CALVIN BABICH**  
Toldeo, OH

**Material: Limestone**  
**Weight: 1,000 lbs.**

"Stone has an undeniable presence and I have a passion for stone sculpture using any type of stone and any type of treatment from carving with great detail to fabrications with rocks carved by nature."

Generously donated to the City of Hastings by the Thornapple Arts Council and its supporters for all of Barry County to enjoy.  
June 2013

## 23 Storm



**Artist: ROBERT R. GARCIA**  
Toledo, OH

**Material: Painted Steel**  
**Weight:**  
**Approximately 190 lbs.**

"I have merged painting and sculpture with aspects of nature and technology to allow me a newly realized and expanded freedom of artistic form."

Generously donated to the City of Hastings by Emily and Dave Jasperse Bosley Pharmacy  
April 2010

## 24 Daphne and the 4 Winds



**Artist: MIKE SOHIKIAN**  
**Genda, OH**

**Material: Steel**  
**Weight: 1,000 lbs.**

**"I can say things with colors  
and shapes that I can't say  
any other way. Art is what your  
feelings sound like and should  
be for the people."**

**Generously donated to the City of  
Hastings by Emily Jasperse  
in memory of Dave Jasperse.  
May 2018**

## 25 Trinity



**Artist: DOUGLAS M. GRUIZENGA**  
**Interlochen, MI**

**Material: Welded Aluminum & Stainless Steel**  
**Weight: 400 lbs.**

"The sculptures that I produce are an attempt to study the absolutes and variables of form and function. Each piece has a basis in actual objects that I have found to be visually stimulating I then vary the composition and relationships between design elements, in an effort to understand the universal truths and variables of composition and function.

Every viewer brings with them, individual experience and understanding. It is my hope that my sculpture will be pleasing to the eye, without limiting the observer's relative ability to interpret the subject matter involved. It is an honor to have even one person take the time to view an object that I have created. It is amazing to think that an indelible image of that event is recorded forever in their mind."

Generously donated to the City of Hastings  
by Doug and Margaret DeCamp.  
July 2014

## 26 Summer Solstice



Artist: PAMELA REITHMEIER  
Monclova, OH

Material: Painted Steel  
Weight: 155 lbs.

"I have found I am drawn to making sculptures using objects from nature. Taking a flat piece of steel and cutting and bending it into a sculpture is like freezing a moment in time so it can be revisited and savored over and over again."

Generously donated to the citizens  
of Hastings by Richard & Donna Tobias of Dick's  
Barber Shop.  
June 2010

## 27 Enlightenment



Artist: TERRY L. HEWLETT  
Charlotte, MI

Material: Aluminum and  
Painted Steel  
Weight: 250 lbs.

"This piece is abstract art and is a different type of medium for many to relate to. One wing is black and represents darkness and ignorance, while the other wing, done in Massey Ferguson red, represents inspiration and new knowledge. The ring in the center represents the catalyst for the 'Enlightenment'!"

Generously donated to the City of Hastings by the Thornapple Arts Council  
and its supporters for all of Barry County to enjoy.  
June 2013



## 28 Buck



Artist: JONATHAN BOWLING  
Greenville, NC

Material: Repurposed Steel  
Weight: 300 lbs.

"For the past 12 years, I have been focused on public art, largely farm animals. These pieces are made with the intention of staying outdoors in a public area without the need for extensive maintenance. The materials I use are often from the turn of the last century, which I feel is appropriate for depicting animals so intertwined with our agrarian past. Repurposed steel provides a sound structure which allows me to work on a scale that lends itself to public spaces."

Generously donated to the City of Hastings by English Market, LLC.  
In honor of Lily, Nolan, Zac, Caden, Hadley, and Henry. October 2020

## 29 Kinderbells



Artist:  
TOM KAUFMANN  
Traverse City, MI

Material:  
Powder Coated  
Steel  
Weight: 350 lbs.

Tom's *Kinderbells* sculpture combines his passions for music and recycling; the bells are made from the tops of condemned industrial pressurized gas tanks. The brightly colored bells and green stand are meant to give the impression of a flower garden.

Price: \$2,750

## 30 Radiolaria



**Artist: JOHN W. PARKER**  
**Glenside, PA**

**Material: Steel Plate**  
**Weight: 2,000 lbs.**

**"My sculptures have evolved out of lifelong interest in nature. I have combined nature with steel, in giving heavy industrial materials a living, animated presence."**

**Generously donated to the City of Hastings by Flexfab LLC and its employees (in recognition of the company's 50th anniversary).  
October 2011**

## 31 My Rescue



**Artist: MARTHA CARES**  
**Sawyer, MI**

**Material:**  
**Powder Coated Steel**  
**Weight: 200 lbs.**

**"The inspiration for *My Rescue* is my Poppy, a rescue dog from Save-A-Stray of St. Joseph, Michigan! I was inspired and moved by the dedication and commitment of the wonderful volunteers."**

**Generously donated to the City of Hastings by Emily and Dave Jasperse of Bosley Pharmacy.  
May 2014**



## 32 Triumph

Artist: MIKE SOHIKIAN  
Genda, OH

Material: Steel, Stone  
Weight: 1,000 lbs.

"During my 40-plus years as a bridge and structural ironworker, as well as my second career as an artist, I've relied on art as a tool for communication. In ironwork, most of the communication was done by architectural drawings, and detailed sketches.

In most cases, it was the only source of communication. My art speaks for me in the same way. It's my way of translating a word, a sound or a feeling into a visual point to communicate and express myself."

Generously donated to the City of Hastings  
by Walgreens and Geenen DeKock Group 1, LLC

If you are interested in purchasing a sculpture,  
contact the City of Hastings Community Development Department  
to make further arrangements.

**269.945.2468**

**[www.downtownhastings.com](http://www.downtownhastings.com)**

Sculptures may be purchased and gifted to the City of Hastings  
in support of the arts or in memory of a loved one for permanent display.

*Leased sculptures provided by  
Midwest Sculpture Initiative*  
**[www.msisculpture.com](http://www.msisculpture.com)**



# Downtown Sculpture Exhibit History

In 2009, as part of their creation of a rest and reflection area behind City Hall, the Hastings Downtown Development Authority (DDA) installed one sculpture on lease from Midwest Sculpture Initiative (MSI) for a 6-month period. During that time, the sculpture was purchased by a member of the community and gifted to the City of Hastings to be put on permanent display within the downtown.

In 2010, the DDA expanded the outdoor art project to include 11 leased sculptures from MSI and the first ever Downtown Sculpture Exhibit was created. Announcement of the pending exhibit created much interest within the community. The program was so well received that before the exhibit was installed, additional sculptures, separate from those leased through MSI, were added to the show. By year end, the exhibit consisted of 17 sculptures.

The sculpture exhibit continues to expand on a yearly basis, not only in the number of city-owned pieces, or size of the overall show, but also in the creation of infrastructure to permanently display them. The purchase and donation of two pieces by the DeCamp Family and the employees of Flexfab LLC in 2010 and 2011 led to the development of two sites for their display. *Avian Ascent* by Toni Lucadello is integrated into a rest area and planter/sculpture stand on the Hastings River Walk and within Municipal Parking Lot #3, at the intersection of Michigan and Apple Street. *Radiolaria* by John W. Parker is featured at the entrance of the Hastings Spray Plaza on

West State Street which was completed in August 2013. The Spray Plaza, a \$450,000 project was approximately 85 percent funded by private donations. The project was a direct result of the sculpture program's civic engagement and an increased awareness of the power of arts, culture, and public infrastructure on our community's downtown health and vibrancy.

Community support of the exhibit has been tremendous. People within and outside of the community praise the exhibit. Community members have shared stories and pictures of friends and relatives who have come to Hastings, from outside of the region and state, who are amazed by a community of our size hosting such an exhibit. Others have shared how relatives get together to stroll the downtown to see the works of art for free.

Funding agencies use the exhibit as a benchmark of community success and have granted the city funding based on the place making efforts. Business professionals, real estate developers, and marketers throughout the state and region, as well as many community members view the installation of the sculptures for what they are – art as a community and economic development strategy.

Thank you for embracing and celebrating the exhibit's success with us. We hope you will return throughout the year to experience the exhibit and explore Hastings on the Thornapple.

*Sponsored by...*



[www.downtownhastings.com](http://www.downtownhastings.com)



**Thornapple  
Arts Council**

[www.thornapplearts.org](http://www.thornapplearts.org)



**ART WORKS.**

**National  
Endowment  
for the Arts**

[arts.gov](http://arts.gov)



**MICHIGAN  
ARTS &  
CULTURE  
COUNCIL**

